

**DESCRIPTION**

2 way bi-stable (double acting) angle seat valve pneumatically operated.

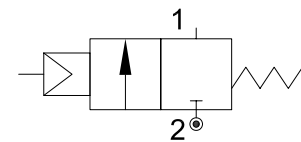
**PRESENTATION**

- Compact solution
- Maintenance free sealing pack
- NPT thread on request
- AISI 316 body available on request
- From 3/8" up to 2"
- 3/4" and 1 1/4" version available on request



**USE:** Food, Packaging, Petrochemical, Metallurgical, Spraying, Vehicles, Printing and Dyeing Machinery equipment

**CONNECTION:** Threaded (BSP, NPT)



**5**

**VALVE FEATURES**

Fluid Pressure	Up to max 10bar
Control Pressure	3 - 8bar
Control Fluid	Neutral gases, Air
Body material	AISI 304
Sealing	PTFE
Fluids	Water, Oils, Gases, Pulp and other liquids
Fluid viscosity	Max 600cSt (mm <sup>2</sup> /s)
Fluid temperature	-10°C to +120°C
Ambient temperature	-10°C to +80°C
Control Type	Double acting

CODE	Actuator	DN	Pilot Pressure	Max Pressure	G	N	K	C	T	A	L	SW
		mm	bar	bar		mm	mm	mm	mm	mm	mm	mm
PEE332CGW10	Ø32	DN10	3 - 8	10	G3/8"	5	99	38	12	112	68	27
PEE332DGW15	Ø32	DN15	3 - 8	10	G1/2"	5	99	38	13.5	112	68	27
PEE340FGW25	Ø40	DN25	3 - 8	10	G1"	5	110	45	16.5	125	90	40
PEE350HGW40	Ø50	DN40	3 - 8	10	G1 1/2"	5	138	55	19	158	116	56
PEE363IGW50	Ø63	DN50	3 - 8	10	G2"	5	160	69	21.5	190	138	69

