

DESCRIPTION

2 way normally closed angle seat valve pneumatically operated.
Inlet under seat. Welded socket.

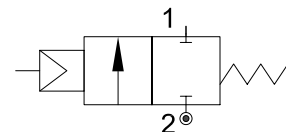
PRESENTATION

- Welded Socket Valve Acc. to DIN 11850-2
- Optional Socket Valve Acc. to DIN 11850-3
- Water Hammer effect prevention (inlet under seat)
- Protected visual position indicator
- PTFE sealing pack
- Maintenance free sealing pack
- Double acting version available on request
- Normally open version available on request
- Pilot thread: G1/8" (G1/4" for 125 mm actuators)
- Universal mounting position



USE: Packaging, Drinks Filling Machinery, Textile printing,
Pharmacy & Medical Equipment, Chemical industry,
Foaming Equipment, Water/sewage Disposal

CONNECTION: Welded Acc. to DIN 11850-2



5

VALVE FEATURES

Fluid Pressure	Up to max 16bar
Control Pressure	from 3.5bar (see tables)
Control Fluid	Neutral gas, Air
Body material	Stainless steel AISI 316
Sealing	PTFE
Actuator Material	AISI 304 or Aluminium (125 mm)
Actuator Size	40mm, 50mm, 63mm, 90mm, 125mm
Fluids	Water, Alcohol, Oils, Fuels, Steam, Natural gases or Liquids, Organic solvents, Acids and Lyes
Fluid viscosity	Max 600cSt (mm ² /s)
Fluid temperature	-10°C to +180°C
Ambient temperature	-10°C to +80°C
Control Type	Normally closed (on request Normally open, Double acting)

CODE	Actuator	DN	Pilot Pressure	Max Pressure	Q	C	R	K	Welded connection			
									HA	HL	DIN 11850-2	
											D	S
mm	bar	bar	mm	mm	mm	mm	mm	mm	mm	mm	mm	
PS140DGW15/V	Ø40	DN15	4	0 - 13	G1/8"	50.5	27	112	118	70	19	1.5
PS150DGW15/V	Ø50		4.5	0 - 14	G1/8"	60	33	125	128			
PS150EGW20/V	Ø50	DN20	4.5	0 - 14	G1/8"	60	33	132	135	100	23	1.5
PS150FGW25/V	Ø50	DN25	4.5	0 - 8	G1/8"	60	33	136	150			
PS163FGW25/V	Ø63		5	0 - 13	G1/8"	75	41	162	175			
PS190FGW25/V	Ø90		3.5	0 - 14	G1/8"	106	55	211	218			
PS163GGW32/V	Ø63	DN32	5	0 - 6	G1/8"	75	41	174	186	125	35	1.5
PS190GGW32/V	Ø90		6	0 - 16	G1/8"	106	55	223	232			
PS163HGW40/V	Ø63	DN40	5	0 - 5	G1/8"	75	41	175	190	130	41	1.5
PS190HGW40/V	Ø90		6	0 - 16	G1/8"	106	55	223	235			
PS163IGW50/V	Ø63	DN50	5	0 - 3	G1/8"	75	41	183	206	155	53	1.5
PS190IGW50/V	Ø90		6	0 - 10	G1/8"	106	55	232	250			
PS190MGW65/V	Ø90	DN65	6	0 - 6	G1/8"	106	55	265	325	270	70	2
PS1125MGW65/V	Ø125AL		5.5	0 - 9	G1/4"	170	85	315	365			
PS1125RGW80/V	Ø125AL	DN80	5.5	0 - 5	G1/4"	170	85	327	380	284	85	2

