

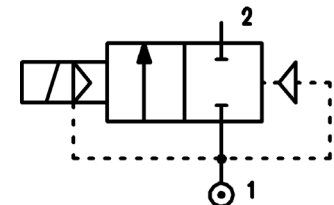
DESCRIPTION

Solenoid valve 2 way with servo-assisted diaphragm bi-stable.
 The bi-stable function is achieved by the use of a polarised permanent magnet energising the coil with a DC current for at least 15ms in the reverse direction of the preceding impulse.



CONSTRUCTION

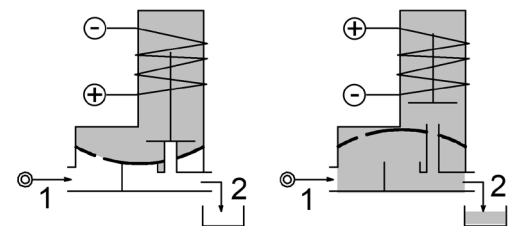
Body and cover	Brass
Armature tube	AISI 303
Plunger and core	AISI 430FR
Magnet	NeFeB
Springs	AISI 302
Seal material	NBR - FPM - EPDM



4

FEATURES

Minimum differential pressure 0.15÷3bar
 Maximum allowable pressure PS 20bar^④
 Maximum fluid viscosity 25cSt (mm²/s)
 Ambient temperature: from -10°C to +80°C according to the coil
 Preferred mounting position with vertical coil above



OPTIONS: Special coil powers

CODE ① ②	Connection G ISO 228	Orifice mm	Kv m ³ /h	Differential pressure bar		Nominal power DC Watt	Coil		Seal ①	Temp. range °C		
				Min	Max		Series	Width				
D117G...37///...	1"1/4	37	18	0.15	10	10	2	30	NBR=B	-10 +90		
D117H...37///...	1"1/2	37	21	0.15	10							
D117I...50///...	2"	50	36	0.15	10							
D117MB75///...	2"1/2	75	75	0.3	5				EPDM=E	-10 +120		
D117RB75///...	3"	75	84	0.3	5							
③D117RB75/W/...	2"1/2	75	75	3	10						FPM=V	-10 +120
③D117MB75/W/...	3"	75	84	3	10							

① Seal Example: D117IB50///201 NBR seal
 ② Coil Coil 24V DC
 ③ Reinforced diaphragm

④ The maximum allowable pressure PS for steam 2,5bar (gauge pressure)

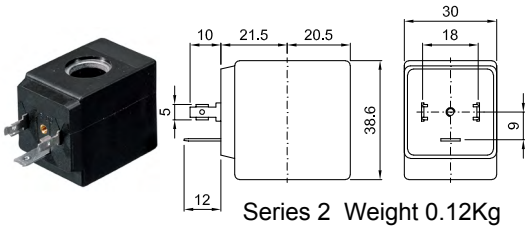
G2"1/2 e G3" SOLENOID VALVES

For applications with fluids listed in chapter 3 / group 1 of the PED Directive 2014/68 / EU (potentially hazardous or explosive fluids / mixtures) consider a PS value reduced to 15 bar max.

COILS ②	Direct Current (V)			Electrical connection	Connectors
	12	24	48		
Series 2 Width 30	200	201	202	DIN 43650A	PG9 code 10349000

DESCRIPTION
 Class F insulation
 Voltage tolerance
 AC +15% -10%
 DC ± 10%
 Protection class
 IP65 with connector fitted
 IP00 without connector
 Continuous service ED100%

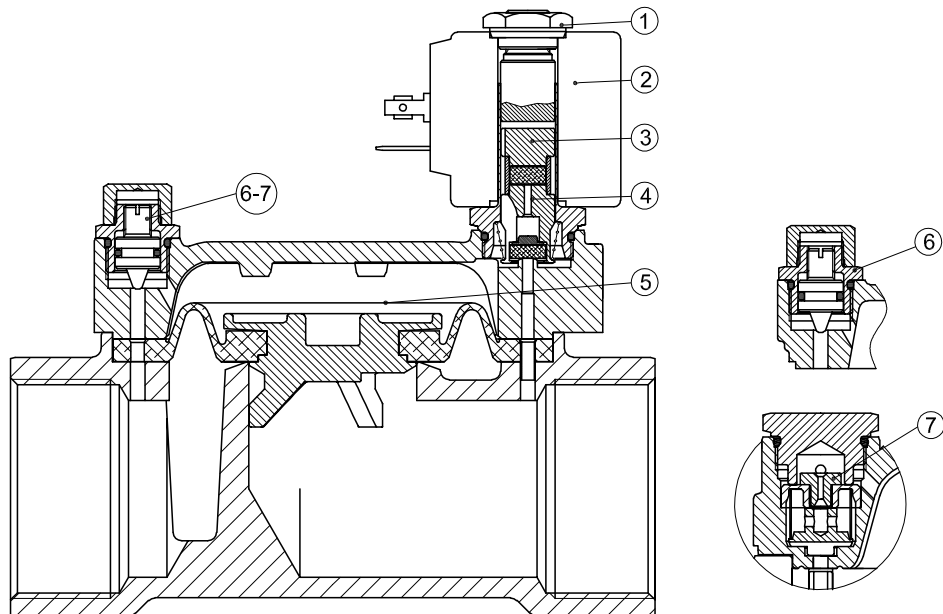
OPTIONS
 Class H insulation
 Cable attached
 Special coil voltage
 Special coil powers



Series 2 Weight 0.12Kg

SPARE PARTS LIST

1. Coil fixing nut
2. Coil
3. Plunger
4. Armature tube with core
5. Diaphragm assembly
6. Speed control valve
7. Water hammering reducer
 $\varnothing 0.8$ - $\varnothing 1.2$ - $\varnothing 1.5$



OVERALL DIMENSION

