

**DESCRIPTION**

Solenoid valve 2 way normally closed in stainless steel AIS 316 with servo-assisted diaphragm.

With explosion proof coil certified for hazardous area:

**ATEX II 2GDEx d IIC T6 or T5 or T4 Gb**

**Ex tb IIIC T80°C or T95°C or T130°C Db IP66**

**Tamb -40°C ÷ +35°C(T6) or +50°C(T5) or +60°C(T4)**

**CESI 03 ATEX 344 Extension No. 01/12**

(other certifications e.g.EAC, INMETRO, CCOE etc. on request)

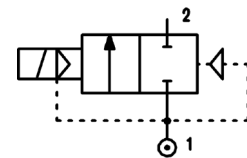


**VALVE CONSTRUCTION**

Body AISI 316  
 Seal material FPM, NBR

**EXPLOSION PROOF COIL CONSTRUCTION**

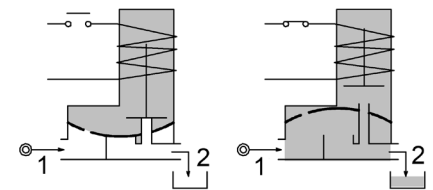
Housing Red colour alloy (painted with epoxy powder)  
 Electrical connection 1/2" NPT (M20x1.5 on request)



**4**

**FEATURES**

Minimum allowable pressure 0.15bar  
 Maximum allowable pressure PS 25bar  
 Maximum fluid viscosity 25cSt (mm<sup>2</sup>/s)  
 Ambient temperature: -40°C ÷ +35°C(T6), +50°C(T5), +60°C(T4)  
 Mounting position with vertical coil above



**OPTIONS:** Versions with slow closing diaphragm

**NOTE:** The solenoid valve is suitable only with media that are **NOT** potentially explosive

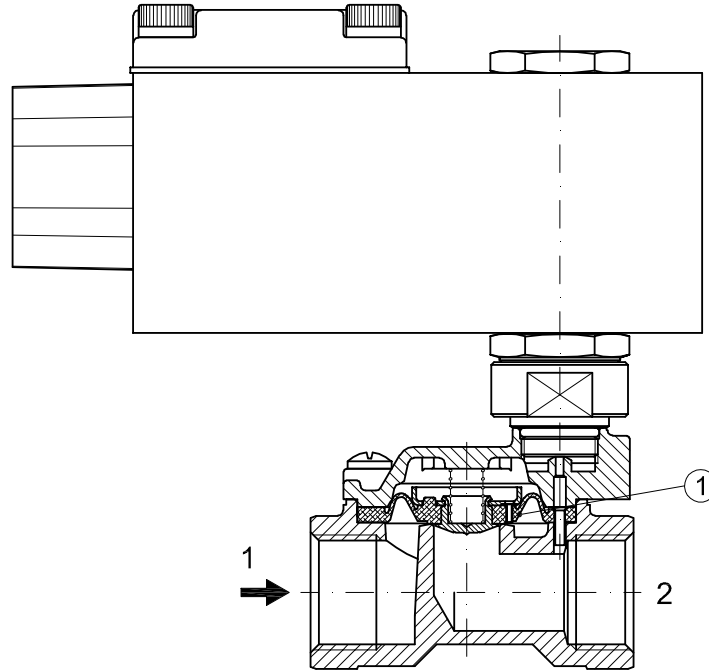
CODE ②	Connection G ISO 228	Orifice mm	Kv m <sup>3</sup> /h	Differential pressure bar			Nominal power		Coil Series	Seal	Temp. range °C
				Min	Max AC DC		AC Holding	DC			
A177CV12/1/...	3/8"	12	2.2	0.15	15	15	12 VA	8W	A6	NBR=B EPDM=E FPM=V	-10 +80
A177DV12/1/...	1/2"	12	2.5	0.15	15	15					
A177EV18/1/...	3/4"	18	5.5	0.15	13	13					
A177FV25/1/...	1"	25	10.2	0.15	10	10					

② Coil

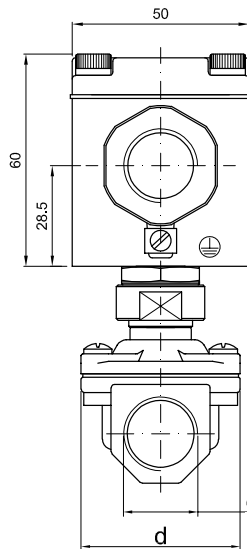
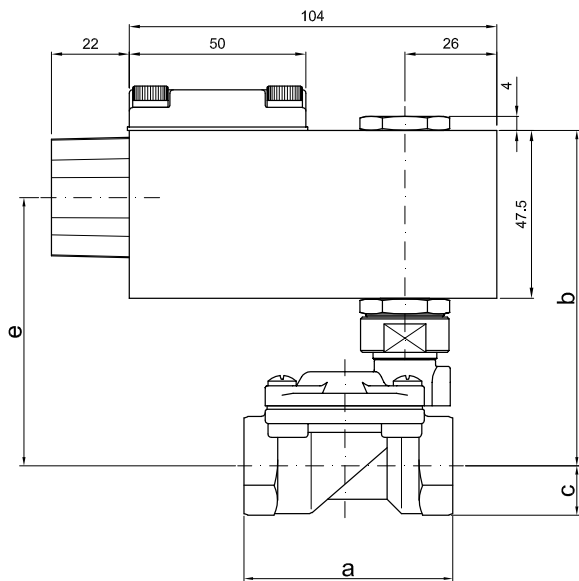
COILS ②	Alternating Current 50/60Hz (V)				Direct Current (V)			Electrical connection
	24	48	110	220 230	12	24	48	
Series A6	A6B	A6C	A6D	A6E	A60	A61	A62	1/2" NPT

**DESCRIPTION**  
 Voltage tolerance  
 AC +15% -10%  
 DC ± 10%  
 Protection class IP66  
 Continuous service ED100%

**SPARE PARTS LIST**  
 1. Diaphragm assembly



**OVERALL DIMENSION**



CONNECTION	a	b	c	d	e	weight Kg
G3/8" Ø12	59	95	14	45	76	1.12
G1/2" Ø12	59	95	14	45	76	1.14
G3/4"	79	101	18	54	82	1.37
G1"	96	110	20	72	91	1.77