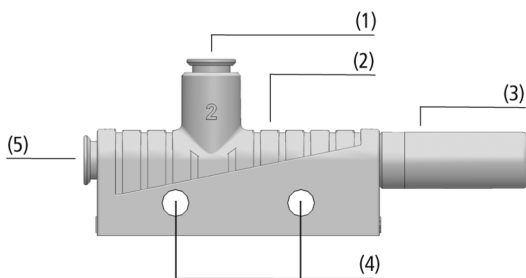


## Basic Ejectors SBP

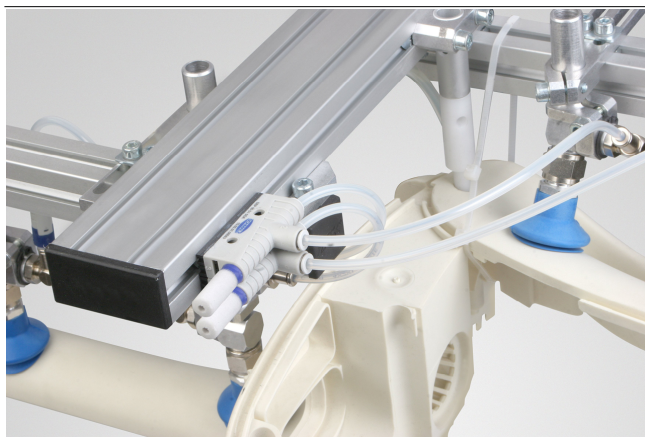
Suction rate from 8 l/min to 215 l/min



Basic Ejectors SBP



System Design Basic Ejectors SBP



Decentral vacuum generation with basic ejectors SBP when handling plastic injection molded parts

### Suitability for Industry Specific Applications

#### Applications

- Basic ejector with main body made of plastic for use in handling systems
- Handling of electronic components
- Use in separation systems for plastic and sheet-metal machining
- Construction of ejector blocks for decentralized individual control of suction cups

#### Design

- One piece housing (2) made of light, impact resistant plastic
- Connection of compressed air (5) and vacuum (1) with quick action push-in coupling (S01 to S03) or threaded holes (G01 to G03)
- Open silencer (3)
- Vacuum generator with single-stage nozzle, available in six power ratings, 0.5 to 2.5 mm
- Can be fixed horizontally with mounting holes (4) or vertically with the base on a mounting plate
- Optional mounting with mounting plate and mounting kit on DIN top-hat rails

#### Product Highlights

- Compact, lightweight plastic housing optimized for decentralized vacuum supply in highly dynamic processes
- Fine power gradation (six levels) for minimum air consumption
- Compact and easy to install, since connections either with thread or plug-in connection
- Open, maintenance-friendly silencer

# Basic Ejectors SBP

Suction rate from 8 l/min to 215 l/min

## Designation Code Basic Ejectors SBP

<b>SBP</b>	-	<b>05</b>	-	<b>G01</b>	-	<b>SDA</b>
1		2		3		4

### 1 – Abbreviated designation

Code	Version
SBP	SBP

### 2 – Nozzle size

Code	Diameter in mm
05...25	ø 0.5 to 2.5

### 3 – Connection

Code	Connection
G01	Connection thread 1
G02	Connection thread 2
G03	Connection thread 3
S01	Quick connect push-in coupling 1
S02	Quick connect push-in coupling 2
S03	Quick connect push-in coupling 3

### 4 – Variant











Code	Type
SDA	Silencer axial

The basic ejector SBP is delivered as a ready-to-connect product.

Available spare parts: silencer

Available accessories: mounting plate, mounting set

## Ordering Data Basic Ejectors SBP

Type*	G01	G02	G03	S01	S02	S03
SBP 05	10.02.01.00599 	-	-	10.02.01.00563 	-	-
SBP 07	10.02.01.00600	-	-	10.02.01.00564	-	-
SBP 10	-	10.02.01.00601 	-	-	10.02.01.00565 	-
SBP 15	-	10.02.01.00602 	-	-	10.02.01.00566 	-
SBP 20	-	-	10.02.01.00603 	-	-	10.02.01.00567 
SBP 25	-	-	10.02.01.00604 	-	-	10.02.01.00568 

\*Connection geometry: see design data of basic ejectors SBP

## Ordering Data Spare Parts Basic Ejectors SBP

Type	Spare Parts		Part no.
SBP 05	Silencer (round)	SD M5-AG 9x24	10.02.01.00539
SBP 07	Silencer (round)	SD M5-AG 9x24	10.02.01.00539
SBP 10	Silencer (round)	SD G1/8-AG 14x40	10.02.01.00540
SBP 15	Silencer (round)	SD G1/8-AG 14x40	10.02.01.00540
SBP 20	Silencer (round)	SD G3/8-AG 20x76 SBP	10.02.01.00719
SBP 25	Silencer (round)	SD G3/8-AG 20x76 SBP	10.02.01.00719

## Ordering Data Accessories Basic Ejectors SBP

Type	Mounting plate	Mounting set
SBP	10.02.01.00511	10.02.01.00769

## Basic Ejectors SBP

Suction rate from 8 l/min to 215 l/min

### Technical Data Basic Ejectors SBP

Type	Nozzle diameter [mm]	Degree of evacuation [%]	Suction rate (max.) [l/min]	Suction rate (max.) [m <sup>3</sup> /h]	Air consumption suction [l/min]*	Air consumption suction [m <sup>3</sup> /h]**	Sound level suction [dB(A)]
SBP	05	85	8.0	0.5	14	0.8	53
SBP	07	85	16.0	1.0	22	1.3	59
SBP	10	85	37.7	2.3	48	2.9	59
SBP	15	85	71.0	4.3	105	6.3	65
SBP	20	85	127.0	7.6	197	11.8	68
SBP	25	85	215.0	12.9	311	18.7	70

\*At optimal operating pressure

\*\*At optimal operating pressure

Type	Sound level free [dB(A)]	Pressure range (operating pressure) [bar]	Recomm. internal hose diameter compressed air [mm]*	Recomm. internal hose diameter vacuum [mm]**	Weight [g]	Operating temperature [°C]
SBP	58	3.0 ... 6.0 bar	2	2	7.5	0 ... 60 °C
SBP	65	3.0 ... 6.0 bar	2	2	7.5	0 ... 60 °C
SBP	65	3.0 ... 6.0 bar	4	6	22.0	0 ... 60 °C
SBP	72	3.0 ... 6.0 bar	4	6	22.0	0 ... 60 °C
SBP	77	3.0 ... 6.0 bar	6	7	50.0	0 ... 60 °C
SBP	78	3.0 ... 6.0 bar	6	7	50.0	0 ... 60 °C

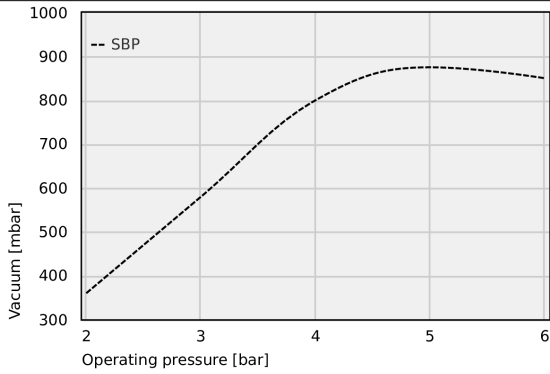
\*For max. length 2 m

\*\*For max. length 2 m

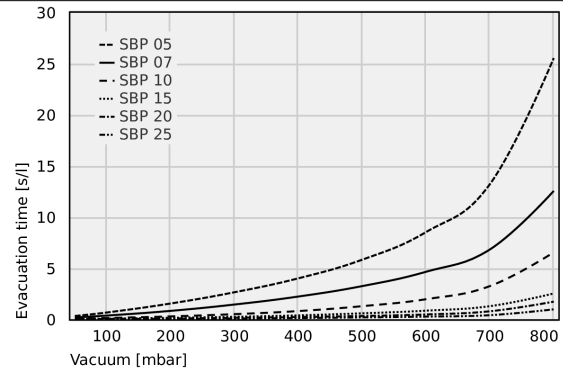
# Basic Ejectors SBP

Suction rate from 8 l/min to 215 l/min

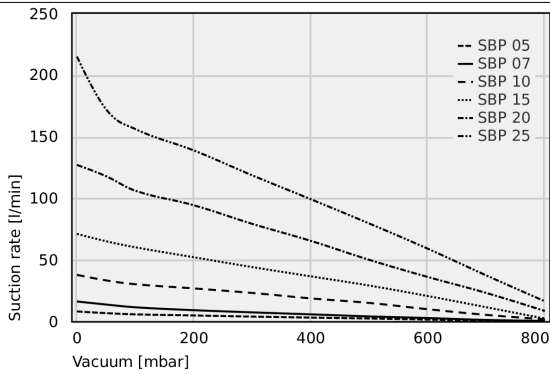
## Performance Data Basic Ejectors SBP



Achievable vacuum at various operating pressures



Evacuation times for various vacuum ranges [s/l]



Suction capacity at various degrees of evacuation [l/min]

## Achievable vacuum at various operating pressures

	2	3	4	5	6
SBP	360.00	580.00	800.00	875.00	850.00

## Basic Ejectors SBP

Suction rate from 8 l/min to 215 l/min

### Evacuation times for various vacuum ranges [s/l]

	50	100	200	300	400	500	600	700	800
SBP 05	0.34	0.68	1.56	2.66	4.02	5.84	8.54	13.22	25.54
SBP 07	0.20	0.38	0.84	1.46	2.24	3.26	4.66	6.84	12.56
SBP 10	0.06	0.14	0.30	0.52	0.82	1.30	1.98	3.26	6.56
SBP 15	0.05	0.08	0.16	0.26	0.40	0.60	0.86	1.30	2.54
SBP 20	0.03	0.05	0.09	0.16	0.24	0.34	0.49	0.80	1.74
SBP 25	0.03	0.04	0.07	0.09	0.14	0.20	0.28	0.42	0.99

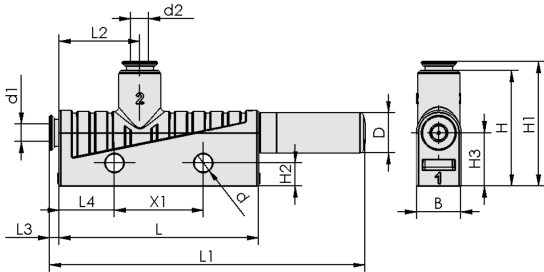
### Suction capacity at various degrees of evacuation [l/min]

	0	50	100	200	300	400	500	600	700	800
SBP 05	8.00	6.62	5.64	4.74	3.81	3.01	2.28	1.42	0.40	0.10
SBP 07	16.10	13.60	11.37	9.03	7.25	5.63	3.97	2.65	1.10	0.30
SBP 10	37.70	33.20	30.10	26.70	23.00	18.60	14.90	9.80	5.20	1.61
SBP 15	71.00	65.00	60.10	52.00	44.00	36.50	29.00	20.50	11.40	2.18
SBP 20	127.00	117.80	106.00	94.20	79.10	65.30	49.87	35.99	23.00	8.36
SBP 25	215.00	172.00	156.10	138.70	118.50	99.10	79.36	58.90	37.24	16.24

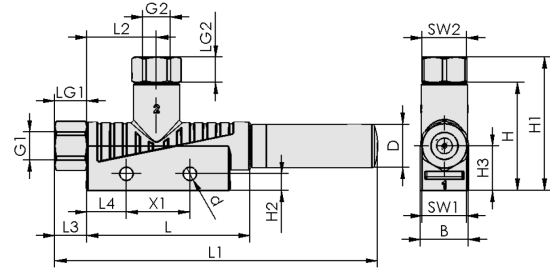
# Basic Ejectors SBP

Suction rate from 8 l/min to 215 l/min

## Design Data Basic Ejectors SBP



SBP S01 - S03



SBP G01 - G03

# Basic Ejectors SBP

Suction rate from 8 l/min to 215 l/min

## Design Data Basic Ejectors SBP

Type			B [mm]	d [mm]	d1 [mm]	d2 [mm]	D [mm]	G1	G2	H [mm]	H1 [mm]	H2 [mm]	H3 [mm]
SBP	05	G01	10	4.2	-	-	9	M5-F	M5-F	26	31.0	5.2	12
SBP	07	G01	10	4.2	-	-	9	M5-F	M5-F	26	31.0	5.2	12
SBP	10	G02	15	4.2	-	-	14	G1/8"-F	G1/8"-F	34	42.0	5.2	14
SBP	15	G02	15	4.2	-	-	14	G1/8"-F	G1/8"-F	34	42.0	5.2	14
SBP	20	G03	20	4.2	-	-	20	G1/4"-F	G3/8"-F	39	53.5	5.2	17
SBP	25	G03	20	4.2	-	-	20	G1/4"-F	G3/8"-F	39	53.5	5.2	17
SBP	05	S01	10	4.2	4	4	9	-	-	26	28.0	5.2	12
SBP	07	S01	10	4.2	4	4	9	-	-	26	28.0	5.2	12
SBP	10	S02	15	4.2	6	8	14	-	-	34	40.0	5.2	14
SBP	15	S02	15	4.2	6	8	14	-	-	34	40.0	5.2	14
SBP	20	S03	20	4.2	8	10	20	-	-	39	45.5	5.2	17
SBP	25	S03	20	4.2	8	10	20	-	-	39	45.5	5.2	17

Type			L [mm]	L1 [mm]	L2 [mm]	L3 [mm]	L4 [mm]	LG1 [mm]	LG2 [mm]	SW1 [mm]	SW2 [mm]	X1 [mm]
SBP	05	G01	45.0	74	18.0	5.0	12.5	5	5	8	8	20
SBP	07	G01	45.0	74	18.0	5.0	12.5	5	5	8	8	20
SBP	10	G02	51.5	102	22.0	10.0	12.5	8	8	14	14	20
SBP	15	G02	51.5	102	22.0	10.0	12.5	8	8	14	14	20
SBP	20	G03	86.5	176	24.5	13.0	12.5	9	10	17	19	20
SBP	25	G03	86.5	176	24.5	13.0	12.5	9	10	17	19	20
SBP	05	S01	45.0	71	18.0	2.0	12.5	-	-	-	-	20
SBP	07	S01	45.0	71	18.0	2.0	12.5	-	-	-	-	20
SBP	10	S02	51.5	97	22.0	5.5	12.5	-	-	-	-	20
SBP	15	S02	51.5	97	22.0	5.5	12.5	-	-	-	-	20
SBP	20	S03	86.5	168	24.5	5.5	12.5	-	-	-	-	20
SBP	25	S03	86.5	168	24.5	5.5	12.5	-	-	-	-	20