

Bell-Shaped Suction Cups SAOG (Oval)

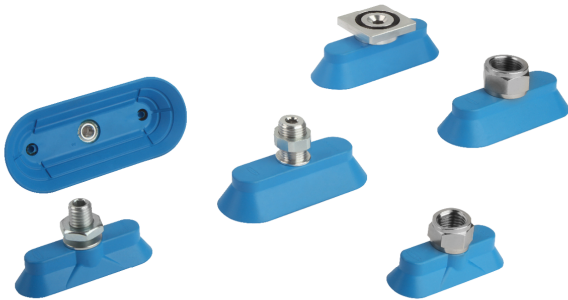
Suction area (LxW) from 60 x 20 mm to 95 x 40 mm



Suitability for industry specific applications

Applications

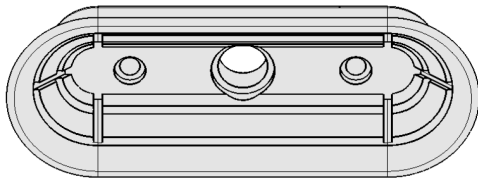
- Oval bell-shaped suction cup for handling of elongated, oiled workpieces with extremely small curved radii
- Handling of sheet metal in very dynamic applications (shorter cycle times)
- Handling of thin steel sheets and aluminum sheets without deformation due to inner support
- Suitable for use in, for example, feeder systems for press lines in the automotive industry
- Displacement-free handling of oiled sheets due to special slot on the underside of the suction cup e.g. for precise positioning in punching machines etc.



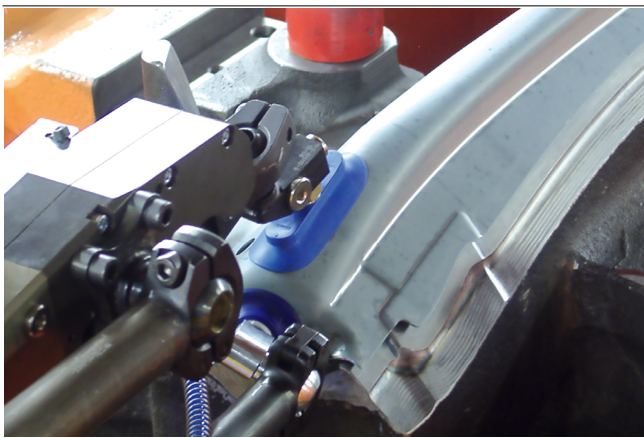
Bell-Shaped Suction Cups SAOG (Oval)

Design

- Oval bell-shaped suction cup with single sealing lip, special slot and inner support
- Suction cups made of NBR material, hardness 45 Shore



System design Bell-Shaped Suction Cups SAOG (Oval)



Bell-shaped suction cups SAOG being used for handling very curved sheet metal parts

Product highlights

- Oval suction cup in bell-shape adapts optimally to narrow, strongly curved workpieces
- Adaptation to workpieces with small radius of curvature thanks to the material NBR with 45 Shore
- Numerous mounting elements allow the connection to all common load beams and feeder systems

Bell-Shaped Suction Cups SAOG (Oval)

Suction area (LxW) from 60 x 20 mm to 95 x 40 mm

☑ Designation code Bell-Shaped Suction Cups SAOG (Oval)

SAOG	-	60x20	-	NBR-45	-	RA
1		2		3		4

1 – Abbreviated designation

Code	Version
SAOG	Flat, oval

2 – Suction area

Code	LxW in mm
60x20...95x40	60x20 to 95x40

3 – Material

Code	Material
NBR-45	Nitrile caoutchuc

4 – Connection

Code	Connection
G1/4-AG	G1/4-AG (AG = male (M))
G1/4-IG	G1/4-IG (IG = female (F))
G3/8-AG	G3/8-AG
G3/8-IG	G3/8-IG
M10-AG	M10-AG
M14x1.5-AG	M14x1.5-AG
RA	Rectangular adapter

Suction cup SAOG, available in various diameters, is delivered with connection nipple vulcanized to elastomer part.