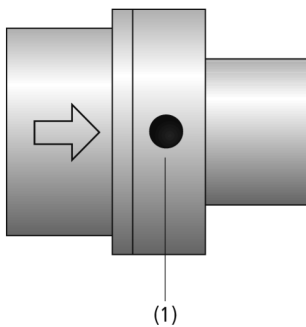


Feed Ejectors SEC

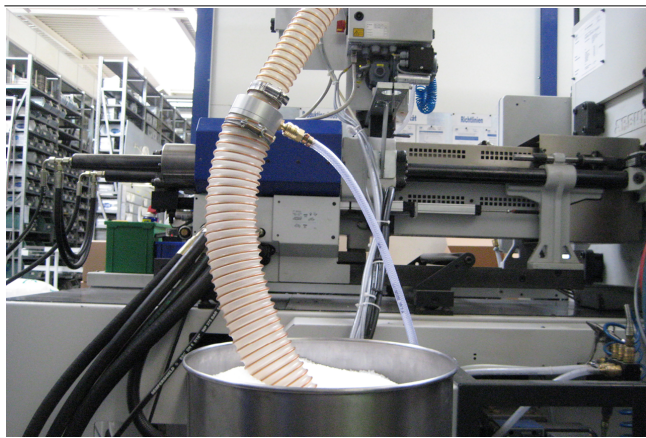
Suction rate from 215 l/min to 8,640 l/min



Feed Ejectors SEC



System design Feed Ejectors SEC



Feed ejectors SEC for transporting granulates

Suitability for industry specific applications

Applications

- Gripping of very porous materials such as foams, textiles, paper and various recycling materials
- Conveyance of light solids, such as polystyrene, plastic granulates, rice or other filling materials
- Exhaust of non-aggressive vapors and gases

Design

- Main body made of anodized aluminum or stainless steel
- Straight vacuum passage
- Compressed air enters at the side (1), through an annular gap

Product highlights

- Ejector with very high volume flow rates at low vacuum optimal for very porous parts and for low-loss conveying of solids
- Power matched sizes provide optimum power levels for all applications

Feed Ejectors SEC

Suction rate from 215 l/min to 8,640 l/min

Designation code Feed Ejectors SEC

SEC	–	100	–	A2
1		2		3

1 – Abbreviated designation

Code	Version
SEC	SEC

2 – Nozzle size

Code	Nozzle size in mm
60...750	6 to 75

3 – Variant

Code	Type
A2	Stainless steel

Feed ejector SEC is delivered as a ready-to-connect product.

Ordering data Feed Ejectors SEC

Type	Part no.
SEC-60	10.02.01.01079
SEC-60 A2	10.02.01.01155
SEC-100	10.02.01.00078
SEC-100 A2	10.02.01.01691
SEC-200	10.02.01.00079
SEC-200 A2	10.02.01.01326
SEC-400	10.02.01.00080
SEC-400 A2	10.02.01.01620
SEC-750	10.02.01.00081

Technical data Feed Ejectors SEC

Type	Nozzle size [mm]	Max. vacuum [mbar]	Suction rate (max.) [l/min]*	Suction rate (max.) [m³/h]	Air consumption suction [l/min]**	Air consumption suction [m³/h]	Pressure range (operating pressure) [bar]	Weight [kg]	Operating temperature [°C]
SEC-60	0	-245	215	12.9	140	6.6	2.0 ... 5.0 bar	0.040	°C
SEC-60 A2	0	-245	215	12.9	140	6.6	2.0 ... 5.0 bar	0.091	°C
SEC-100	10	-170	610	36.6	190	11.1	2.0 ... 6.0 bar	0.070	-20 ... 80 °C
SEC-100 A2	-	-170	610	36.6	190	11.1	2.0 ... 6.0 bar	0.206	°C
SEC-200	20	-60	1,370	82.5	290	17.4	2.0 ... 6.0 bar	0.180	-20 ... 80 °C
SEC-200 A2	20	-60	1,370	82.5	290	17.4	2.0 ... 6.0 bar	0.511	°C
SEC-400	40	-25	2,250	135.0	500	26.7	2.0 ... 6.0 bar	0.525	-20 ... 80 °C
SEC-400 A2	-	-25	2,250	135.0	500	26.7	2.0 ... 6.0 bar	1.475	°C
SEC-750	75	-5	8,640	518.4	770	46.2	2.0 ... 6.0 bar	2.350	-20 ... 80 °C

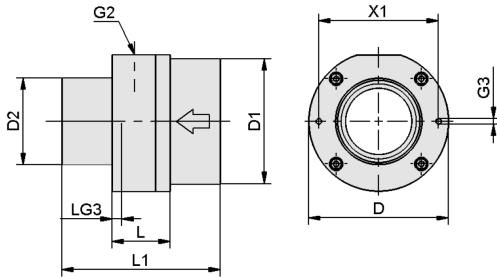
*At optimal operating pressure of approx. 4.5 bar

**At optimal operating pressure of approx. 4.5 bar

Feed Ejectors SEC

Suction rate from 215 l/min to 8,640 l/min

Design data Feed Ejectors SEC



SEC

Feed Ejectors SEC

Suction rate from 215 l/min to 8,640 l/min

Design data Feed Ejectors SEC

Type	D [mm]	D1 [mm]	D2 [mm]	G2	G3	L [mm]	L1 [mm]	LG3 [mm]	X1 [mm]
SEC-60	32	12.5	12.5	M5-F	M3-F	14	44	5	25
SEC-100	37	19.0	19.0	G1/8"-F	M4-F	21	70	8	29
SEC-200	50	38.0	32.0	G1/4"-F	M4-F	30	90	12	42
SEC-400	84	75.0	52.0	G3/8"-F	M4-F	35	95	14	72
SEC-750	140	125.0	100.0	G1/2"-F	M6-F	65	180	6	126