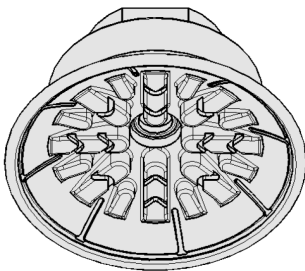


## Flat Suction Cups SAF HT2

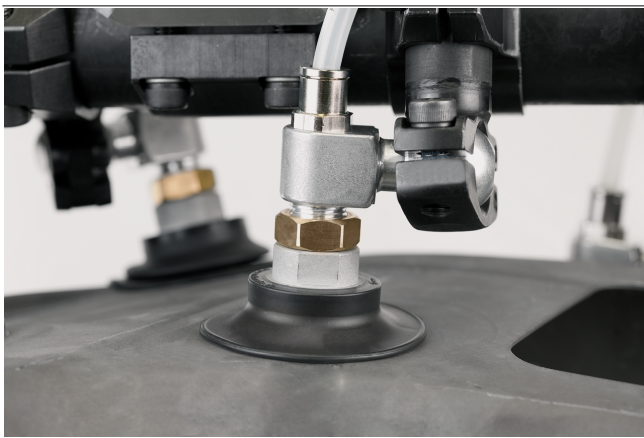
Suction area (Ø) from 30 mm to 60 mm



Flat Suction Cups SAF HT2



System Design Flat Suction Cups SAF HT2



Flat suction cups SAF HT2 being used for handling formed sheet metal parts

### Suitability for Industry Specific Applications

#### Applications

- Round flat suction cups for dynamic handling of hot metal sheets up to 250 °C (short cycle times)
- Unloading of parts after forming
- Handling of thin aluminum sheets without deformation or deep drawing
- For use e.g. in feeder systems for press lines in the automotive industry

#### Design

- Robust and wear-resistant suction cup SAF made of HT2 with special inner support
- Connection nipple vulcanized to elastomer part (for very high strength)

#### Product Highlights

- Silicone-free special material HT2 is free of LABS and temperature resistant up to 250 °C
- Large, structured inner support prevents deep drawing and withstands the highest lateral forces
- Soft, flexible sealing lip seals optimally, even on slightly curved surfaces and uneven surfaces

## Flat Suction Cups SAF HT2

Suction area (Ø) from 30 mm to 60 mm

### Designation Code Flat Suction Cups SAF HT2

<b>SAF</b>	-	<b>60</b>	-	<b>HT2-65</b>	-	<b>G3/8-IG</b>
1		2		3		4

#### 1 – Abbreviated designation

Code	Version
SAF	Flat

#### 2 – Suction area

Code	Diameter in mm
30...60	ø 30 to 60

#### 3 – Material

Code	Material
HT2-65	High temperature material

#### 4 – Connection

Code	Connection
G1/4-AG	G1/4-AG (AG = male (M))
G1/4-IG	G1/4-IG (IG = female (F))
G3/8-IG	G3/8-IG

Suction cup SAF HT2, available in various diameters, is delivered with connection nipple vulcanized to elastomer part.

### Ordering Data Flat Suction Cups SAF HT2

Type		Vacuum connection:		
		G1/4-AG	G1/4-IG	G3/8-IG
SAF	30	10.01.01.12349	10.01.01.12348	10.01.01.12350
SAF	40	10.01.01.12353	10.01.01.12352	10.01.01.12354
SAF	50	10.01.01.12357	10.01.01.12356	10.01.01.12358
SAF	60	10.01.01.12361	10.01.01.12360	10.01.01.12362

### Technical Data Flat Suction Cups SAF HT2

Type		Suction force (-600 mbar) [N]*	Lateral force [N]**	Volume [cm <sup>3</sup> ]	Workpiece radius min. (convex) [mm]	Hose diameter (recom.) d [mm]***
SAF	30	38	29	1.7	40	4
SAF	40	69	51	3.8	50	4
SAF	50	100	78	7.0	65	4
SAF	60	150	102	13.0	75	6

\*The specified suction forces are theoretical values at a vacuum of -0.6 bar and with a smooth, dry workpiece surface - they do not include a safety factor

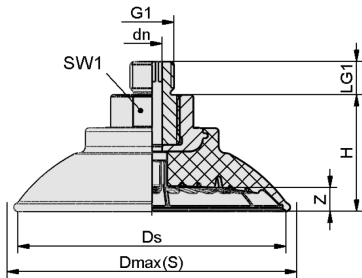
\*\*The specified lateral forces are values measured at a vacuum of -0.6 bar with a dry, smooth, flat workpiece surface. Depending on the workpiece surface and its quality, the actual values may deviate from these values.

\*\*\*The recommended hose diameter is based on a hose length of approx. 2 m

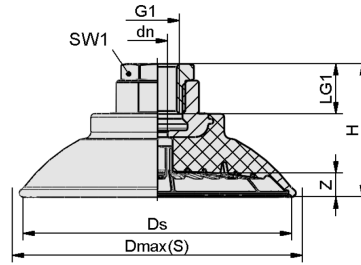
# Flat Suction Cups SAF HT2

Suction area ( $\emptyset$ ) from 30 mm to 60 mm

## Design Data Flat Suction Cups SAF HT2



SAF HT2 AG



SAF HT2 IG

## Flat Suction Cups SAF HT2

Suction area ( $\emptyset$ ) from 30 mm to 60 mm

### Design Data Flat Suction Cups SAF HT2

Type*	Dmax(S) [mm]**	dn [mm]	Ds [mm]	G1	H [mm]	LG1 [mm]	SW1 [mm]	Z (Stroke) [mm]
SAF 30 HT2-65 G1/4-AG	34	4	31	G1/4"-M	20	10	17	3
SAF 30 HT2-65 G1/4-IG	34	4	31	G1/4"-F	20	12	17	3
SAF 30 HT2-65 G3/8-IG	34	4	31	G3/8"-F	36	9	22	3
SAF 40 HT2-65 G1/4-AG	46	4	41	G1/4"-M	22	10	17	4
SAF 40 HT2-65 G1/4-IG	46	4	41	G1/4"-F	22	12	17	4
SAF 40 HT2-65 G3/8-IG	46	4	41	G3/8"-F	38	9	22	4
SAF 50 HT2-65 G1/4-AG	56	6	50	G1/4"-M	28	10	22	5
SAF 50 HT2-65 G1/4-IG	56	6	50	G1/4"-F	33	15	22	5
SAF 50 HT2-65 G3/8-IG	56	6	50	G3/8"-F	28	15	22	5
SAF 60 HT2-65 G1/4-AG	67	6	61	G1/4"-M	31	10	22	6
SAF 60 HT2-65 G1/4-IG	67	6	61	G1/4"-F	36	15	22	6
SAF 60 HT2-65 G3/8-IG	67	6	61	G3/8"-F	31	15	22	6

\*Acceptable dimensional tolerances for rubber parts concerning to DIN ISO 3302-1 E3

\*\*External dimension of the suction cup when it is pressed against the workpiece by the vacuum