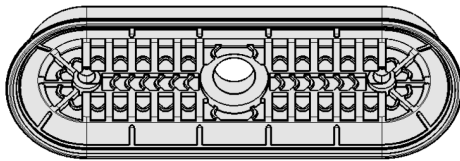


## Flat Suction Cups SAOF HT2 (Oval)

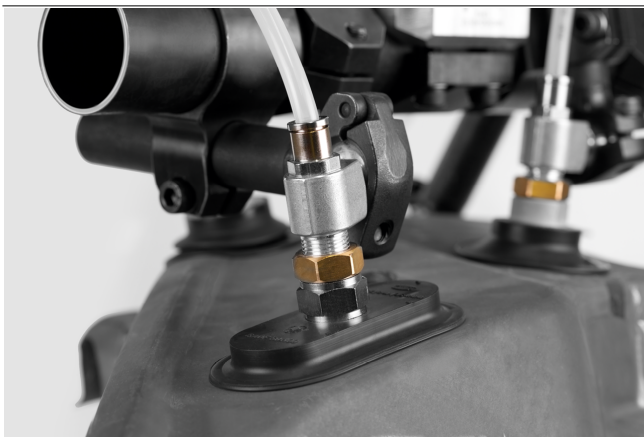
Suction area (LxW) from 60 x 23 mm to 100 x 50 mm



Flat Suction Cups SAOF HT2 (Oval)



System Design Flat Suction Cups SAOF HT2 (Oval)



Flat suction cups SAOF HT2 being used for handling formed sheet metal parts

### Suitability for Industry Specific Applications

#### Applications

- Oval flat suction cup for dynamic handling of hot metal sheets up to 250 °C
- Unloading of elongated workpieces after forming, e.g. reinforced ribs and plates
- Handling of thin aluminum sheets without deformation or deep drawing
- For use e.g. in feeder systems for press lines in the automotive industry

#### Design

- Robust and wear-resistant oval flat suction cup SAOF made of HT2 with single sealing lip and inner support
- Connection nipple glued to the reinforcing element of the suction cup (very high strength and temperature resistance)

#### Product Highlights

- Silicone-free special material HT2 is free of LABS and temperature resistant up to 250 °C
- Large, structured inner support prevents deep drawing and withstands the highest lateral forces
- Soft, flexible sealing lip seals optimally, even on slight unevenness

## Flat Suction Cups SAOF HT2 (Oval)

Suction area (LxW) from 60 x 23 mm to 100 x 50 mm

### Designation Code Flat Suction Cups SAOF HT2 (Oval)

<b>SAOF</b>	-	<b>80x40</b>	-	<b>HT2-65</b>	-	<b>G1/4-IG</b>
1		2		3		4

#### 1 – Abbreviated designation

Code	Version
SAOF	Flat, oval

#### 2 – Suction area

Code	LxW in mm
60x23...100x50	60x23 to 100x50

#### 3 – Material

Code	Material
HT2-65	High temperature material

#### 4 – Connection

Code	Connection
G1/4-AG	G1/4-AG (AG = male (M))
G1/4-IG	G1/4-IG (IG = female (F))
G3/8-IG	G3/8-IG

Suction cup SAOF HT2, available in various dimensions, is delivered with connection nipple glued to elastomer part.

### Ordering Data Flat Suction Cups SAOF HT2 (Oval)

Type		Vacuum connection:		
		G1/4-AG	G1/4-IG	G3/8-IG
SAOF	60x23	10.01.05.00743	10.01.05.00742	10.01.05.00741
SAOF	80x40	10.01.05.00751	10.01.05.00750	10.01.05.00749
SAOF	90x30	10.01.05.00747	10.01.05.00746	10.01.05.00745
SAOF	100x50	10.01.05.00755	10.01.05.00754	10.01.05.00753

### Technical Data Flat Suction Cups SAOF HT2 (Oval)

Type		Suction force (-600 mbar) [N]*	Lateral force [N]**	Volume [cm <sup>3</sup> ]	Workpiece radius min. (convex) [mm]	Hose diameter (recom.) d [mm]***
SAOF	60x23	57	36	3.0	20	4
SAOF	80x40	140	108	10.7	50	4
SAOF	90x30	122	94	7.0	40	4
SAOF	100x50	217	177	20.0	75	6

\*The specified suction forces are theoretical values at a vacuum of -0.6 bar and with a smooth, dry workpiece surface - they do not include a safety factor

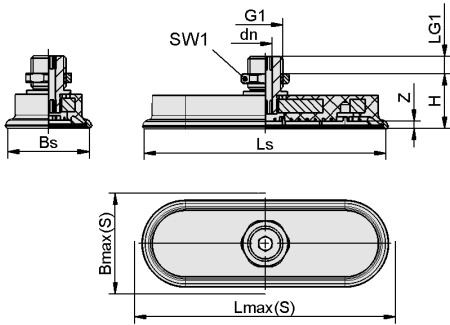
\*\*The specified lateral forces are values measured at a vacuum of -0.6 bar with a dry, smooth, flat workpiece surface. Depending on the workpiece surface and its quality, the actual values may deviate from these values.

\*\*\*The recommended hose diameter is based on a hose length of approx. 2 m

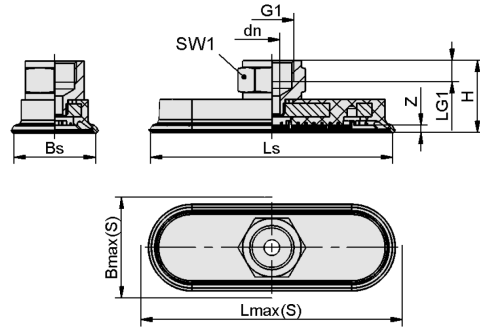
## Flat Suction Cups SAOF HT2 (Oval)

Suction area (LxW) from 60 x 23 mm to 100 x 50 mm

### Design Data Flat Suction Cups SAOF HT2 (Oval)



SAOF HT2 AG



SAOF HT2 IG

## Flat Suction Cups SAOF HT2 (Oval)

Suction area (LxW) from 60 x 23 mm to 100 x 50 mm

### Design Data Flat Suction Cups SAOF HT2 (Oval)

Type*	Bmax(S) [mm]**	Bs [mm]	dn [mm]	G1	H [mm]	LG1 [mm]	Lmax(S) [mm]***	Ls [mm]	SW1 [mm]	Z (Stroke) [mm]
SAOF 60x23 HT2-65 G1/4- AG	25	22	5.0	G1/4"-M	18.0	8	64	61	17	3
SAOF 60x23 HT2-65 G1/4-IG	25	22	6.0	G1/4"-F	26.0	8	64	61	17	3
SAOF 60x23 HT2-65 G3/8-IG	25	22	6.0	G3/8"-F	26.0	8	64	61	22	3
SAOF 80x40 HT2-65 G1/4- AG	43	39	5.0	G1/4"-M	20.0	8	85	81	17	4
SAOF 80x40 HT2-65 G1/4-IG	43	39	6.0	G1/4"-F	28.0	8	85	81	17	4
SAOF 80x40 HT2-65 G3/8-IG	43	39	6.0	G3/8"-F	28.0	9	85	81	22	4
SAOF 90x30 HT2-65 G1/4- AG	34	31	5.0	G1/4"-M	19.0	8	94	91	17	3
SAOF 90x30 HT2-65 G1/4-IG	34	31	6.0	G1/4"-F	26.0	8	94	91	17	3
SAOF 90x30 HT2-65 G3/8-IG	34	31	6.0	G3/8"-F	27.0	9	94	91	22	3
SAOF 100x50 HT2-65 G1/4- AG	54	49	6.0	G1/4"-M	22.0	8	106	102	17	5
SAOF 100x50 HT2-65 G1/4-IG	54	49	8.0	G1/4"-F	30.0	8	106	102	17	5
SAOF 100x50 HT2-65 G3/8-IG	54	49	8.0	G3/8"-F	30.5	9	106	102	22	5

\*Acceptable dimensional tolerances for rubber parts concerning to DIN ISO 3302-1 E3

\*\*External dimension of the suction cup when it is pressed against the workpiece by the vacuum

\*\*\*External dimension of the suction cup when it is pressed against the workpiece by the vacuum