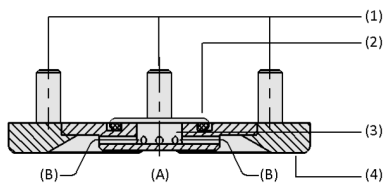


# Floating Suction Cups SBS Thin

Floating suction cups for handling highly sensitive workpieces



Floating Suction Cups SBS Thin



System Design Floating Suction Cups SBS Thin



Floating suction cups SBS when handling printed circuit boards

## Suitability for Industry Specific Applications

### Applications

- Loading and unloading of transport cassettes
- Handling of printed circuit boards, drilled PCBs and wafers
- Low-contact gripping of sensitive workpieces such as thin copper foils and substrates
- Gentle handling of workpieces with slightly structured surfaces
- Use in automation processes that are difficult to access

### Design

- Connection via three M1.6x4 screws (1) and sealing element (2)
- Flat aluminum main body with integrated Bernoulli nozzle (3)
- Flow element (4) for dense to slightly porous parts
- Vacuum (A), exhaust air (B)

### Product Highlights

- High holding forces despite flat design for confined automation processes
- Operation without ejector, as vacuum is generated according to Bernoulli's principle
- Low-contact handling, as suction cup "floats" on an air cushion
- Safe separation of thin, porous workpieces

# Floating Suction Cups SBS Thin

Floating suction cups for handling highly sensitive workpieces

## Designation Code Floating Suction Cups SBS Thin

<b>SBS</b>	-	<b>20</b>	-	<b>SF</b>	-	<b>TH</b>	-	<b>M1.6-AG</b>	-	<b>AL</b>
1		2		3		4		5		6

### 1 – Abbreviated designation

Code	Version
SBS	SBS

### 2 – Diameter

Code	Diameter in mm
20	ø 20

### 3 – Flow element

Code	Type
SF	Standard Flow

### 4 – Design

Code	Type
TH	Flat design

### 5 – Connection

Code	Connection
M1.6-AG	M1.6-AG (AG = male (M))

### 6 – Material

Code	Material
AL	Aluminum

Floating suction cup SBS Thin is delivered assembled. The assembly consists of:

- Floating suction cup of type SBS Thin

## Ordering Data Floating Suction Cups SBS Thin

Type	Part no.
SBS 20 SF TH M1.6-AG AL	10.01.01.14784

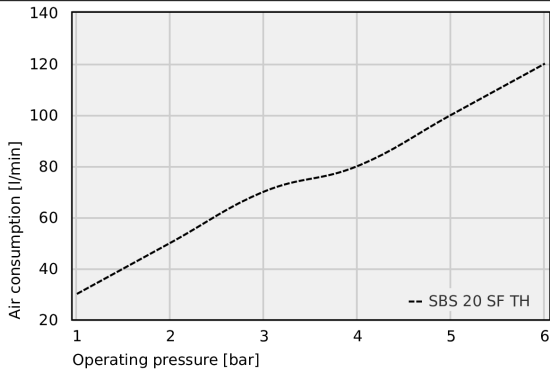
## Technical Data Floating Suction Cups SBS Thin

Type	Shape	Number of holes	Holding force [N]	Air consumption [m³/h]	Air consumption [l/min]	Operating pressure	Operating temperature	Weight [g]
SBS 20 SF TH M1.6-AG AL	Standard Flow	8	3	6	100	1.0 ... 6.0 bar	0 ... 80 °C	1.7

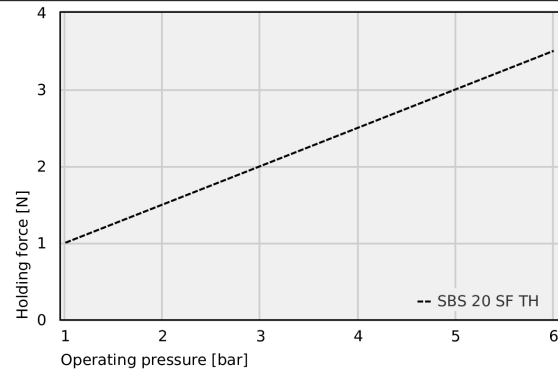
# Floating Suction Cups SBS Thin

Floating suction cups for handling highly sensitive workpieces

## Performance Data Floating Suction Cups SBS Thin



Air consumption



Holding force

## Air consumption


Typ	1	2	3	4	5	6
SBS 20 SF TH	30	50	70	80	100	120

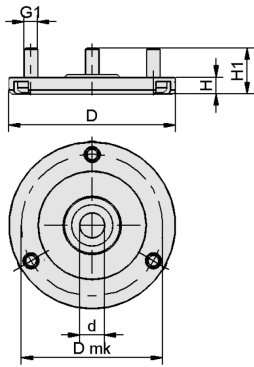
# Floating Suction Cups SBS Thin

Floating suction cups for handling highly sensitive workpieces

 **Holding force**

Typ	1	2	3	4	5	6
SBS 20 SF TH	1	1.5	2	2.5	3	3.5

 **Design Data Floating Suction Cups SBS Thin**



SBS Thin

## Floating Suction Cups SBS Thin

Floating suction cups for handling highly sensitive workpieces

### Design Data Floating Suction Cups SBS Thin

Type	D [mm]	d [mm]	Dmk [mm]	G1	H [mm]	H1 [mm]
SBS 20 SF TH M1.6-AG AL	20	3	17	M1.6-M	2	5.5

### Multimedia product presentation

Medium	Link
Product video	<a href="https://vimeo.com/555127664">https://vimeo.com/555127664</a>