

bit FILTER-REGULATOR



Filter regulator with rolling diaphragm.

- High flow rate with reduced pressure drop
- Excellent degree of condensate separation
- Semi-automatic or automatic drain
- All-round condensate level viewing

The degree of filtration is shown by the colour of the cartridge:

yellow = 5 μm , white = 20 μm , blue = 50 μm .



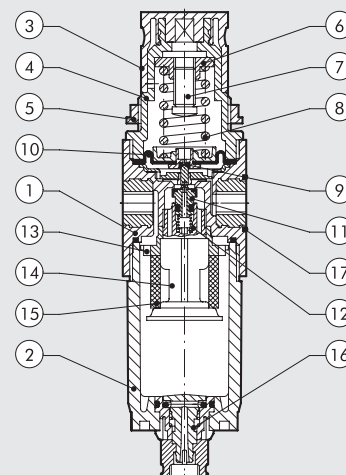
TECHNICAL DATA	FR BIT 1/8"		FR BIT 1/4"	
	1/8"		1/4"	
Threaded port	1/8"		1/4"	
Setting range	0 to 2 - 0 to 4 - 0 to 8 - 0 to 12			
Degree of filtration	5 (yellow) - 20 (white) - 50 (blue)			
Max. inlet pressure	MPa		1.3	
	bar		13	
	psi		188	
Flow rate at 6.3 bar (0.63 MPa to 91 psi) ΔP 0.5 bar (0.05 MPa to 7 psi)	Nl/min	290		
	scfm	10		
Flow rate at 6.3 bar (0.63 MPa to 91 psi) ΔP 1 bar (0.1 MPa to 14 psi)	Nl/min	600		
	scfm	21		
Max temperature at 1 MPa; 10 bar; 145 psi	$^{\circ}\text{C}$		50	
	$^{\circ}\text{F}$		122	
Weight	g		110	
Wall fixing screws	M4 by means of the bracket provided			
Bowl capacity	cm ³		16	
Mounting position	Vertical			
Gauge port	G 1/8"			
Condensate drain	RMSA: drain with manual condensate discharge and automatic discharge at zero pressure SAC: automatic drain with condensate discharge .			
	Operates by pressure drop – requires variable air take-offs.			
	Compressed air			
	The regulator pressure must always be set upwards.			
	For increased sensitivity, use a pressure regulator with a rated pressure as close as possible to the required value.			

UNITS

bit FILTER-REGULATOR

COMPONENTS

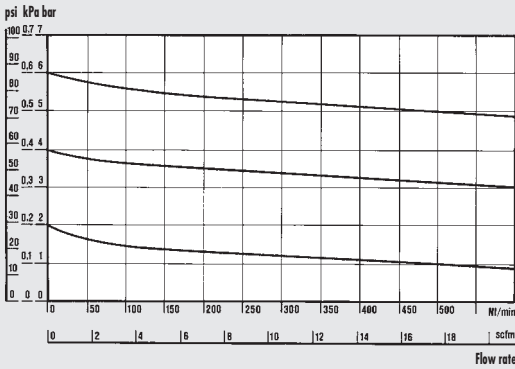
- ① Technopolymer body with OT58 threaded element
- ② Clear technopolymer bowl
- ③ Technopolymer knob
- ④ Technopolymer bell
- ⑤ Technopolymer fixing ring nut
- ⑥ OT58 brass nut
- ⑦ OT58 brass adjusting screw
- ⑧ Steel adjusting spring
- ⑨ NBR relieving gasket
- ⑩ Rolling diaphragm
- ⑪ OT58 valve with NBR vulcanized gasket
- ⑫ Stainless steel valve compression spring
- ⑬ Technopolymer centrifuge
- ⑭ Technopolymer baffle plug
- ⑮ HDPE sintered filter cartridge
- ⑯ Condensate drain (RMSA)
- ⑰ NBR gaskets



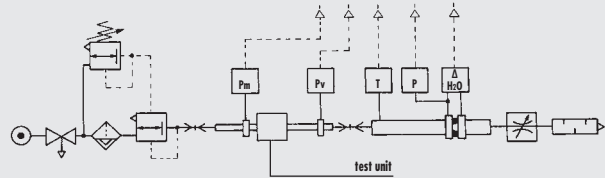
FLOW CHARTS

FR

P_m = 0.7 MPa; 7 bar; 102 psi
Inlet pressure

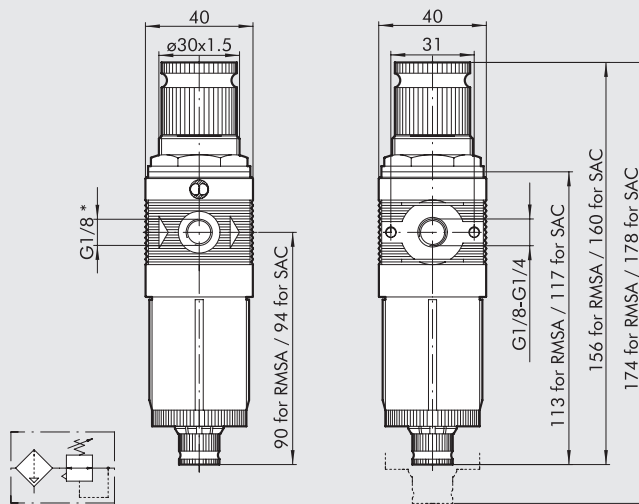


Department of Mechanics
Turin Polytechnic



• Flow tests carried out at the Department of Mechanics, Turin Polytechnic, using the computerized test bench following CETOP RP50R recommendations (ISO DIS 6358-2-approved) with ISO 5167 diaphragm gauge.

DIMENSIONS



* Pressure gauge port

SYNOPTIC, SIZES AND VERSIONS

FR	BIT	1/8	5	02	RMSA
ELEMENT	SIZE	THREADED PORT	DEGREE OF FILTRATION	SETTING RANGE	CONDENSATE DRAIN
FR	BIT	1/8 1/4	5 = 5 µm 20 = 20 µm 50 = 50 µm	02 = 0 to 2 bar 04 = 0 to 4 bar 08 = 0 to 8 bar 012 = 0 to 12 bar	RMSA SAC

RMSA: drain with manual condensate discharge and automatic discharge at zero pressure
SAC: automatic drain with condensate discharge .

Operates by pressure drop – requires variable air take-offs.

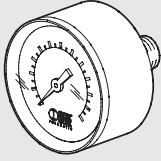
ORDERING CODES

Code	Description
5105001	FR BIT 1/8 5 02 RMSA
5105013	FR BIT 1/8 5 02 SAC
5105002	FR BIT 1/8 20 02 RMSA
5105014	FR BIT 1/8 20 02 SAC
5105003	FR BIT 1/8 50 02 RMSA
5105015	FR BIT 1/8 50 02 SAC
5105004	FR BIT 1/8 5 04 RMSA
5105016	FR BIT 1/8 5 04 SAC
5105005	FR BIT 1/8 20 04 RMSA
5105017	FR BIT 1/8 20 04 SAC
5105006	FR BIT 1/8 50 04 RMSA
5105018	FR BIT 1/8 50 04 SAC
5105007	FR BIT 1/8 5 08 RMSA
5105019	FR BIT 1/8 5 08 SAC
5105008	FR BIT 1/8 20 08 RMSA
5105020	FR BIT 1/8 20 08 SAC
5105009	FR BIT 1/8 50 08 RMSA
5105021	FR BIT 1/8 50 08 SAC
5105010	FR BIT 1/8 5 012 RMSA
5105022	FR BIT 1/8 5 012 SAC
5105011	FR BIT 1/8 20 012 RMSA
5105023	FR BIT 1/8 20 012 SAC
5105012	FR BIT 1/8 50 012 RMSA
5105024	FR BIT 1/8 50 012 SAC
5205001	FR BIT 1/4 5 02 RMSA
5205013	FR BIT 1/4 5 02 SAC
5205002	FR BIT 1/4 20 02 RMSA
5205014	FR BIT 1/4 20 02 SAC
5205003	FR BIT 1/4 50 02 RMSA
5205015	FR BIT 1/4 50 02 SAC
5205004	FR BIT 1/4 5 04 RMSA
5205016	FR BIT 1/4 5 04 SAC
5205005	FR BIT 1/4 20 04 RMSA
5205017	FR BIT 1/4 20 04 SAC
5205006	FR BIT 1/4 50 04 RMSA
5205018	FR BIT 1/4 50 04 SAC
5205007	FR BIT 1/4 5 08 RMSA
5205019	FR BIT 1/4 5 08 SAC
5205008	FR BIT 1/4 20 08 RMSA
5205020	FR BIT 1/4 20 08 SAC
5205009	FR BIT 1/4 50 08 RMSA
5205021	FR BIT 1/4 50 08 SAC
5205010	FR BIT 1/4 5 012 RMSA
5205022	FR BIT 1/4 5 012 SAC
5205011	FR BIT 1/4 20 012 RMSA
5205023	FR BIT 1/4 20 012 SAC
5205012	FR BIT 1/4 50 012 RMSA
5205024	FR BIT 1/4 50 012 SAC

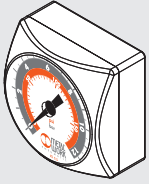
bit ACCESSORIES

ACCESSORIES FOR STANDARD bit AND SERIES F bit FOR WATER

PRESSURE GAUGE



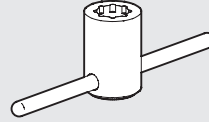
Code	Description
9700102 *	M 40 1/8 04
9700101 *	M 40 1/8 012



9700109 *	M 40x40 1/8 04
9700110 *	M 40x40 1/8 012

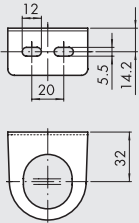
* Cannot be used with water

DOME DISASSEMBLY SPANNER



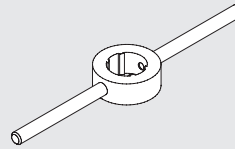
Code	Description
9220701	Cover LUB spanner

R/FR FIXING BRACKET



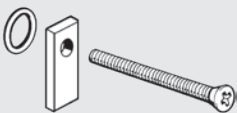
Code	Description
9200701	SF100 - BIT - ND 1/4 - SY1

COVER DISASSEMBLY SPANNER



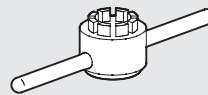
Code	Description
9170401	CS CS BIT

ASSEMBLY PLATE (PAIR)



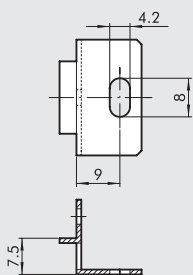
Code	Description
9170201	PAB 1/8 - 1/4 BIT

REDUCER PLUG DISASSEMBLY SPANNER



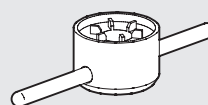
Code	Description
9170501	CS OTR BIT

WALL MOUNTING BRACKET (PAIR)



Code	Description
9170301	SFB 1/8 - 1/4 BIT

BOWL DISASSEMBLY SPANNER



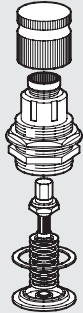
Code	Description
9170601	CS TF - TL BIT - SY1

bit SPARE PARTS



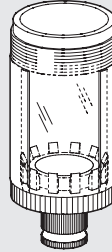
SPARE PARTS FOR STANDARD bit

UPPER COVER FOR MR



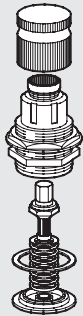
Code	Description
9250805	Spares CS 1/8 1/4 BIT 02
9250806	Spares CS 1/8 1/4 BIT 04
9250807	Spares CS 1/8 1/4 BIT 08
9250808	Spares CS 1/8 1/4 BIT 012

FILTER AND FILTER-REGULATOR BOWL



Code	Description
9255001	Spares TF 1/8 1/4 BIT RMSA
9255101	Spares TF 1/8 1/4 BIT SAC

UPPER COVER FOR MR FC



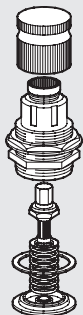
Code	Description
9250817	Spares CS FC 1/8 1/4 BIT 02
9250818	Spares CS FC 1/8 1/4 BIT 04

AUTOMATIC DRAIN (SAC)



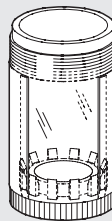
Code	Description
9000803	Spares SAC automatic drain

UPPER COVER FOR MRA



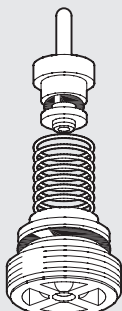
Code	Description
9250809	Spares CSA 1/8 - 1/4 BIT 02
9250814	Spares CSA 1/8 - 1/4 BIT 04
9250815	Spares CSA 1/8 - 1/4 BIT 08
9250816	Spares CSA 1/8 - 1/4 BIT 012

LUBRICATOR BOWL



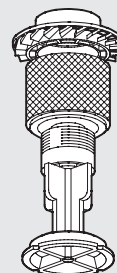
Code	Description
9251402	Spares TL 1/8 1/4 BIT

COMPLETE POPPET FOR MR AND MRA



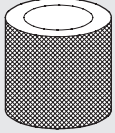
Code	Description
9250705	Spares poppet for MR
9250706	Spares poppet for MR-SR (rapid drain)
9250708	Spares poppet for MRA

FILTER ELEMENT



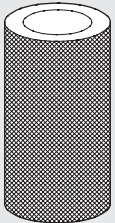
Code	Description
9251708	Spares FP 1/8-1/4 BIT 5 (yellow)
9251709	Spares FP 1/8-1/4 BIT 20 (white)
9251710	Spares FP 1/8-1/4 BIT 50 (blue)

FILTER CARTRIDGE



Code	Description
9251808	Spares filter cartridge BIT 5 (yellow)
9251809	Spares filter cartridge BIT 20 (white)
9251810	Spares filter cartridge BIT 50 (blue)

DEPURATOR FILTER ELEMENT



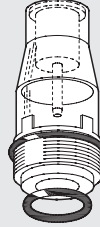
Code	Description
9251712	Spares FP DEP. 1/8 1/4 BIT

COMPLETE POPPET FOR FR



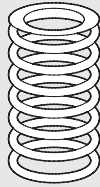
Code	Description
9250905	Spares OTFR 1/8 1/4 BIT 5 (yellow)
9250906	Spares OTFR 1/8 1/4 BIT 20 (white)
9250907	Spares OTFR 1/8 1/4 BIT 50 (blue)

TRANSPARENT LUBRICATOR COVER



Code	Description
9251302	Spares CVL 100-200-300-400 BIT

SPRING FOR MR, FR



Code	Description
9250610	Spares MO 02 BIT
9250611	Spares MO 04 BIT
9250612	Spares MO 08 BIT
9250613	Spares MO 012 BIT

NOTES

SPARE PARTS FOR SERIES F bit FOR WATER

FILTER ELEMENT



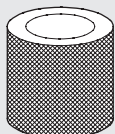
Code	Description
9251709	Spares FP 1/8-1/4 BIT 20 (white)

SPRING FOR REG F, FR F



Code	Description
9250610	Spares MO 02 BIT
9250611	Spares MO 04 BIT
9250612	Spares MO 08 BIT
9250613	Spares MO 012 BIT

FILTER CARTRIDGE



Code	Description
9251809	Spares filter cartridge BIT 20 (white)

NOTES