

# Newdeal FILTER

Filter with different impurity filtration degrees.

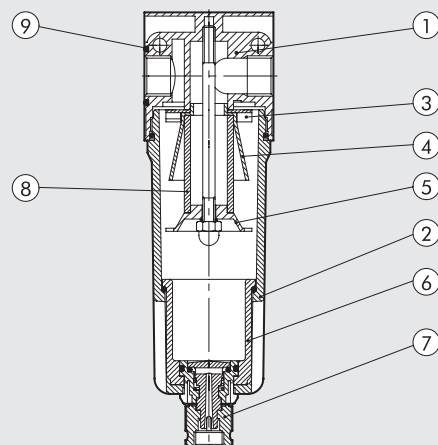
- Metal bowl with external viewing
- Semi-automatic and condensate drainage



TECHNICAL DATA		FIL ND 1/4"	FIL ND 3/8"	FIL ND 1/2"	FIL ND 3/4"	FIL ND 1"
Threaded port		1/4"	3/8"	1/2"	3/4"	1"
Degree of filtration	µm	4 - 20 - 50	4 - 20 - 50	4 - 20 - 50	4 - 20 - 50	4 - 20 - 50
Max. inlet pressure	MPa	1.8	1.8	1.8	1.8	1.8
	bar	18	18	18	18	18
	psi	261	261	261	261	261
Flow rate at 6.3 bar (0.63 MPa to 91 psi) ΔP 0.5 bar (0.05 MPa to 7 psi)	Nl/min	1300	3100	3100	9100	9100
	scfm	46	110	110	324	324
Flow rate at 6.3 bar (0.63 MPa to 91 psi) ΔP 1 bar (0.1 MPa to 14 psi)	Nl/min	1720	4100	4100	11000	11000
	scfm	61	146	146	391	391
Max temperature at 1 MPa; 10 bar; 145 psi	°C	50°	50°	50°	50°	50°
	°F	122°	122°	122°	122°	122°
Weight	kg	0.4	0.9	0.9	1.2	1.2
Wall fixing screws		M4 x 40	M4 x 55	M4 x 55	M6 x 75	M6 x 75
Bowl capacity	cm <sup>3</sup>	10	45	45	170	170
Mounting position		Vertical	Vertical	Vertical	Vertical	Vertical
Drain		RMSA - SAC	RMSA - SAC - RA	RMSA - SAC - RA	RMSA - RA	RMSA - RA
		RMSA: drain with manual condensate discharge and automatic discharge at zero pressure.				
		RA: automatic drain with condensate discharge, independent of pressure and flow rate. Version conveys the draining by inserting the pipe having internal diameter 6 mm in the lower port.				
		SAC: automatic drain with condensate discharge.				
		<b>Operates by pressure drop – requires variable air take-offs.</b>				
		Compressed air				
		<b>The maximum inlet pressure for the version with RA automatic condensate drainage must not exceed 10 bar.</b>				
Fluid		Compressed air				
Note on use		<b>The maximum inlet pressure for the version with RA automatic condensate drainage must not exceed 10 bar.</b>				

## COMPONENTS

- ① Zamak body
- ② Aluminium bowl
- ③ Technopolymer centrifuge
- ④ Technopolymer baffle plug
- ⑤ Technopolymer screen
- ⑥ Clear technopolymer bowl
- ⑦ Drain (RMSA)
- ⑧ HDPE bronze filter cartridge (1/4 - 3/8 - 1/2), sintered bronze (1")
- ⑨ NBR gaskets

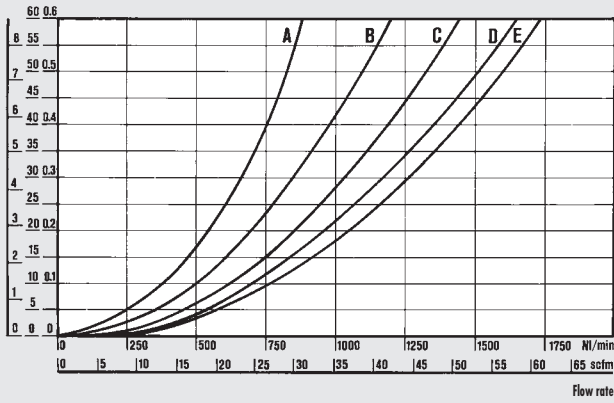


FLOW CHARTS

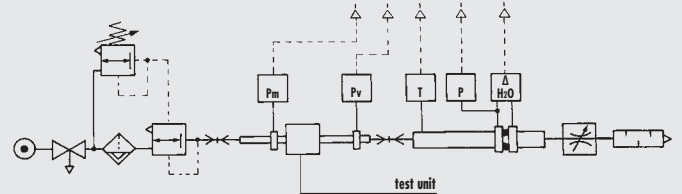
FIL 1/4

$\Delta P = (P_m - P_v)$

psi kPa bar



Department of Mechanics  
Turin Polytechnic



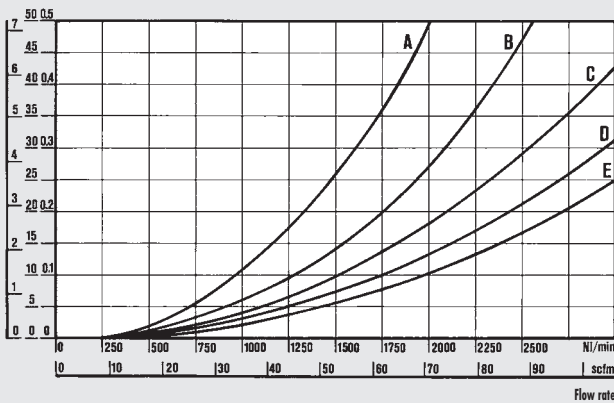
• Flow tests carried out at the Department of Mechanics, Turin Polytechnic, using the computerized test bench following CETOP RP50R recommendations (ISO DIS 6358-2-approved) with ISO 5167 diaphragm gauge.

- (A) = 2 bar - 0.2 MPa - 29 psi
- (B) = 4 bar - 0.4 MPa - 58 psi
- (C) = 6 bar - 0.6 MPa - 87 psi
- (D) = 8 bar - 0.8 MPa - 116 psi
- (E) = 10 bar - 1 MPa - 145 psi

FIL 3/8 - 1/2

$\Delta P = (P_m - P_v)$

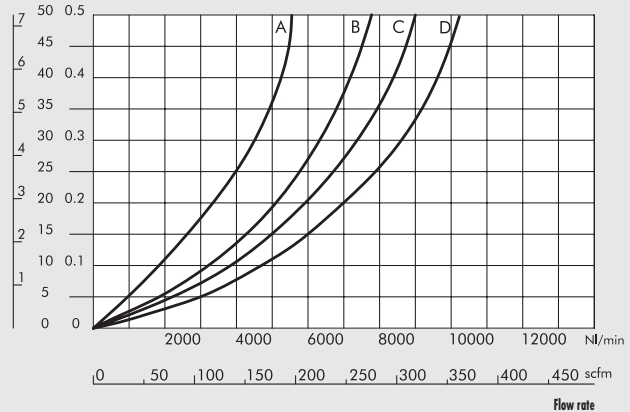
psi kPa bar



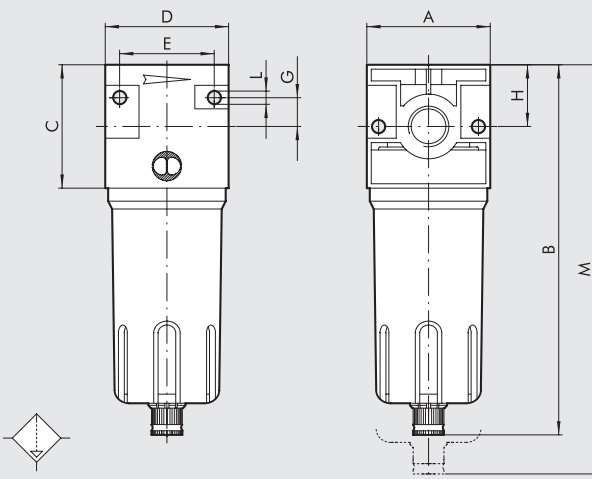
FIL 3/4 - 1"

$\Delta P = (P_m - P_v)$

psi kPa bar



DIMENSIONS



		FIL ND 1/4"	FIL ND 3/8"	FIL ND 1/2"	FIL ND 3/4"	FIL ND 1"
Threaded port		1/4"	3/8"	1/2"	3/4"	1"
A		42	60		80	
B	RMSA	142	180		235	
	RA	-	184		239	
	SAC	146	184		239	
C		42	60		80	
D		42	60		80	
E		32	46		66	
G		10	14		22	
H		21	30		40	
L		Hole for M4 screws	Hole for M4 screws		Hole for M6 screws	
M	RMSA	185	230		325	
	RA	-	234		329	
	SAC	189	234		329	

**SYNOPTIC, SIZES AND VERSIONS**

FIL ELEMENT	1/4 THREADED PORT	4 DEGREE OF FILTRATION	RMSA TYPE OF CONDENSATE DRAIN
FIL.	1/4	4 µm 20 µm 50 µm	RMSA
	3/8		SAC
	1/2		RMSA
			SAC
			RA
	3/4		RMSA
	1		RA

RMSA: drain with manual condensate discharge and automatic discharge at zero pressure.

RA: automatic drain with condensate discharge, independent of pressure and flow rate. Version conveys the draining by inserting the pipe having internal diameter 6 mm in the lower port.

SAC: automatic drain with condensate discharge.  
**Operates by pressure drop – requires variable air take-offs.**

**ORDERING CODES**

Code	Description
<b>New deal FILTER 1/4"</b>	
1221005	FIL 1/4 4 RMSA
1221013	FIL 1/4 4 SAC
1221006	FIL 1/4 20 RMSA
1221014	FIL 1/4 20 SAC
1221008	FIL 1/4 50 RMSA
1221016	FIL 1/4 50 SAC
<b>New deal FILTER 3/8"</b>	
1321005	FIL 3/8 4 RMSA
1321009	FIL 3/8 4 RA
1321013	FIL 3/8 4 SAC
1321006	FIL 3/8 20 RMSA
1321010	FIL 3/8 20 RA
1321014	FIL 3/8 20 SAC
1321008	FIL 3/8 50 RMSA
1321012	FIL 3/8 50 RA
1321016	FIL 3/8 50 SAC
<b>New deal FILTER 1/2"</b>	
1421005	FIL 1/2 4 RMSA
1421009	FIL 1/2 4 RA
1421013	FIL 1/2 4 SAC
1421006	FIL 1/2 20 RMSA
1421010	FIL 1/2 20 RA
1421014	FIL 1/2 20 SAC
1421008	FIL 1/2 50 RMSA
1421012	FIL 1/2 50 RA
1421016	FIL 1/2 50 SAC
<b>New deal FILTER 3/4"</b>	
1521005	FIL 3/4 4 RMSA
1521009	FIL 3/4 4 RA
1521006	FIL 3/4 20 RMSA
1521010	FIL 3/4 20 RA
1521008	FIL 3/4 50 RMSA
1521012	FIL 3/4 50 RA
<b>New deal FILTER 1"</b>	
1621005	FIL 1 4 RMSA
1621009	FIL 1 4 RA
1621006	FIL 1 20 RMSA
1621010	FIL 1 20 RA
1621008	FIL 1 50 RMSA
1621012	FIL 1 50 RA

**NOTES**

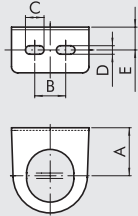
UNITS

New deal FILTER

# Newdeal ACCESSORIES



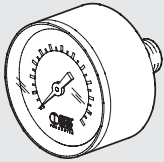
## MOUNTING BRACKET FOR REG.



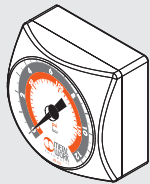
Code	Description
9200701	SF 1/4
9400701	SF 1/2

Code	A	B	C	D	E
9200701	32	20	12	5.5	14.2
9400701	42	40	12	5.5	15

## PRESSURE GAUGE

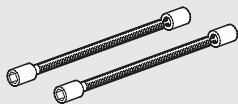


Code	Description
9700102	M 40 1/8 04
9700101	M 40 1/8 012
9800102	M 50 1/8 04
9800101	M 50 1/8 012
9900101	M 63 1/4 012

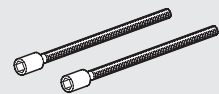


9700109	M 40x40 1/8 04
9700110	M 40x40 1/8 012

## TIE RODS

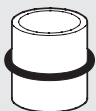


Code	Description
9200901	T 1/4 F+L tie rods
9400901	T 1/2 F+L tie rods
9600901	T 3/4 F+L tie rods



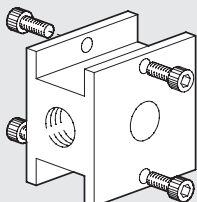
9604402	V3V+FR 3/4-1 tie rods
---------	-----------------------

## ADAPTER FOR V3V



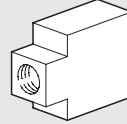
Code	Description
9201001	Adapt. X V3V+FR/D 1/4
9401001	Adapt. X V3V+D 3/8
9401002	Adapt. X V3V+D 1/2
9601001	Adapt. X V3V+F 1

## REGULATOR CONNECTION BLOCK



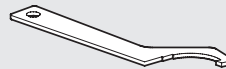
Code	Description	Weight [g]
9200501	BC 1/4 block	90
9400501	BC 1/2 block	244
9600501	BC 3/4 block	428

## SPACERS FOR FRL WALL MOUNTING



Code	Description
9200601	DF 1/4 spacer
9400601	DF 1/2 spacer
9600601	DF 3/4 spacer

## DISASSEMBLY TOOL FOR BOWL



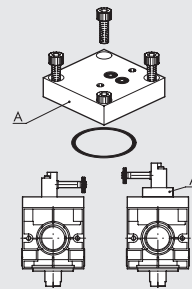
Code	Description
9601501	Disassembly key

## ASSEMBLY SCREWS (2 PIECES)



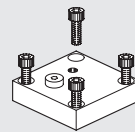
Code	Description
9250001	CVA 1/4 screw M4x40
9250002	CVA 1/4 screw M4x82 V3V+F+R
9450001	CVA 1/2 screw M5x55
9450002	CVA 3/8 1/2 screw M5x60 V3V+R
9450003	CVA 3/8 1/2 screw M5x120 V3V+F+R
9650001	CVA 3/4 screw M6X70

## REVERSE PLATE CNOMO CONTROL FOR V3V 3/4"-1"



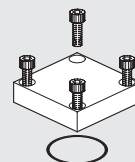
Code	Description	Weight [g]
9640201	Reverse plate kit V3V cnomo control	86

## PLATE FOR REMOTE CONTROL FOR V3V 3/4"-1"



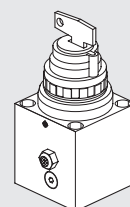
Code	Description	Weight [g]
9640001	Remote control plate kit	84

## REG OR V3V END PLATE



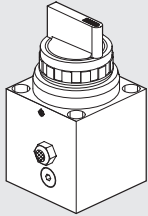
Code	Description	Weight [g]
9640101	End plate kit for regulator or V3V	82

## KEY CONTROL FOR V3V 3/4"-1"



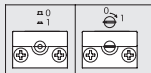
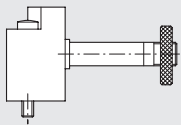
Code	Description	Weight [g]
9640301	Key control kit for V3V	364

## MANUAL CONTROL FOR V3V 3/4"-1"



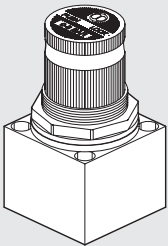
Code	Description	Weight [g]
9640401	Manual control kit for V3V	340

## CNOMO CONTROL FOR V3V 3/4"-1"



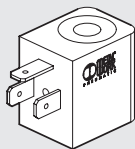
Code	Description
9453920	Elpon cnomo control kit, manual monostable
9453922	Elpon cnomo control kit, manual bistable

## PILOT REGULATOR FOR ND 3/4"-1"



Code	Description	Weight [g]
9640501	02 pilot regulator kit	220
9640502	04 pilot regulator kit	220
9640503	08 pilot regulator kit	220
9640504	012 pilot regulator kit	220

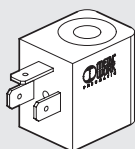
## COIL 22 mm FOR V3V ELPN



Code	Description
W0215000151	Coil 22 Ø 8 BA 2W-12VDC
W0215000101	Coil 22 Ø 8 BA 2W-24VDC
W0215000111	Coil 22 Ø 8 BA 3.5VA-24VAC
W0215000121	Coil 22 Ø 8 BA 3.5VA-110VAC
W0215000131	Coil 22 Ø 8 BA 3.5VA-220VAC

Electrical connection DIN 43650 B-IND

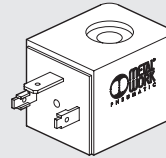
## COIL 22 mm FOR V3V ELPN



Code	Description
W0215000251	Coil 22 Ø 8 BA 2W-12VDC UR
W0215000201	Coil 22 Ø 8 BA 2W-24VDC UR
W0215000211	Coil 22 Ø 8 BA 3.5VA-24VAC UR
W0215000221	Coil 22 Ø 8 BA 3.5VA-110VAC UR
W0215000231	Coil 22 Ø 8 BA 3.5VA-220VAC UR

Electrical connection DIN 43650 B-IND

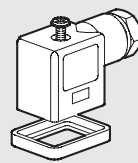
## COIL 30 mm FOR V3V ELPN



Code	Description
W0210010100	Coil 30 Ø 8 2W 24VDC
W0210011100	Coil 30 Ø 8 3.5VA 24VAC 50/60HZ
W0210012100	Coil 30 Ø 8 3.5VA 110VAC 50/60HZ
W0210013100	Coil 30 Ø 8 3.5VA 220VAC 50/60HZ

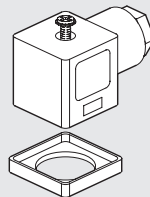
Electrical connection DIN 43650 - A

## ELECTRIC CONNECTOR 22 mm FOR COILS DIN 43650 B-IND



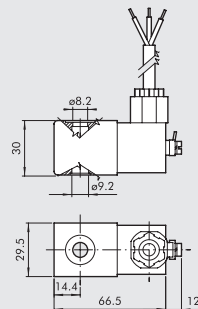
Code	Description
W0970510011	Connector standard
W0970510012	Connector 22 LED 24V
W0970510013	Connector 22 LED 110V
W0970510014	Connector 22 LED 220V
W0970510015	Connector 22 LED VDR 24V
W0970510016	Connector 22 LED VDR 110V
W0970510017	Connector 22 LED VDR 220V
W0970510070	Connector 22 ATEX II 2 GD

## ELECTRIC CONNECTOR 30 mm FOR COILS DIN 43650-A



Code	Description
W0970520033	Connector standard
W0970520034	Connector 30 LED 24V
W0970520035	Connector 30 LED 110V
W0970520036	Connector 30 LED 220V
W0970520037	Connector 30 VDR 24V
W0970520038	Connector 30 VDR 110V
W0970520039	Connector 30 VDR 220V

## KIT COIL EEXM



Code	Description
0227606913	Kit for coil 30 24 VDC EEXMT5 cable 3m
0227606915	Kit for coil 30 24 VDC EEXMT5 cable 5m
0227608013	Kit for coil 30 24 VAC EEXMT5 cable 3m
0227608015	Kit for coil 30 24 VAC EEXMT5 cable 5m
0227608023	Kit for coil 30 110 VAC EEXMT5 cable 3m
0227608025	Kit for coil 30 110 VAC EEXMT5 cable 5m
0227608033	Kit for coil 30 230 VAC EEXMT5 cable 3m
0227608035	Kit for coil 30 230 VAC EEXMT5 cable 5m

According to Atex 2014/34/EU rule,

Ex II 2G Ex mb IIC T4/T5 Gb

Ex II 2D Ex tb IIC T130/T95 °C IP66 Db

N.B.: Supplied complete with adapter for Ø8 mm sleeve

## KIT FOR COIL SIDE 22 IP65



Code	Description
0222100100	Kit for coil 22 - IP65

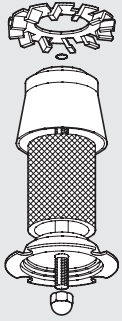
Improved IP65 protection, even after prolonged exposure to atmospheric agents.

Applicable to valves with a technopolymer control.

# Newdeal SPARE PARTS

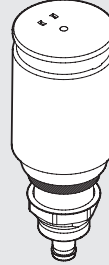


## FILTER AND FILTER REGULATOR FILTERING ELEMENT



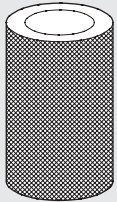
Code	Description
9450102	Spares FP 1/2 20
9450103	Spares FP 1/2 4
9450101	Spares FP 1/2 50
9250102	Spares FP 1/4 20
9250103	Spares FP 1/4 4
9250101	Spares FP 1/4 50
9650103	Spares FP 3/4 4
9650102	Spares FP 3/4 20
9650101	Spares FP 3/4 50

## AUTOMATIC DRAIN (RA)



Code	Description
9000802	Spares RA automatic drain

## FILTERING ELEMENT FOR DEPURATOR



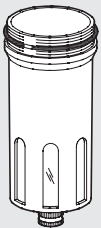
Code	Description
9450105	Spares kit FP DEP. 3/8 1/2

## AUTOMATIC DRAIN (SAC)



Code	Description
9000803	Spares SAC automatic drain

## METAL FILTER BOWL



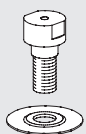
Code	Description
9450301	Spares TMVF 1/2 RMSA
945201	Spares TMVF 1/2 SAC
9250301	Spares TMVF 1/4 RMSA
925201	Spares TMVF 1/4 SAC
9650301	Spares TMVF 3/4 1 RMSA

## SPRINGS FOR REGULATORS AND FILTER REGULATOR



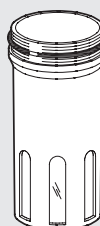
Code	Description
9250601	Spares MO 02 1/4
9250602	Spares MO 04 1/4
9250603	Spares MO 08 1/4
9250604	Spares MO 12 1/4
9450601	Spares MO 04 1/2
9450602	Spares MO 08 1/2
9450603	Spares MO 12 1/2
9650601	Spares MO 04 3/4
9650602	Spares MO 08 3/4
9650603	Spares MO 12 3/4

## VENTURI LUBRICATOR DIAPHRAGM



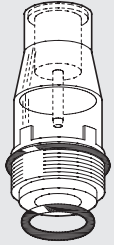
Code	Description
9252001	Spares MB 100 1/4
9352001	Spares MB 200 1/4 3/8 1/2
9652002	Spares MB 3/4-1

## METAL LUBRICATOR BOWL



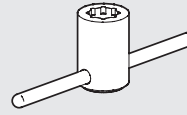
Code	Description
9251201	Spares TMVL 1/4
9451201	Spares TMVL 1/2
9651201	Spares TMVL 3/4

**TRANSPARENT LUBRICATOR COVER**



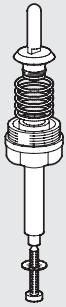
Code	Description
9251302	Spares CVL 100-200-300-400 BIT

**DOME DISASSEMBLY SPANNER**



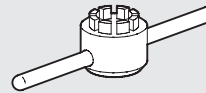
Code	Description
9220701	Acc cover LUB spanner

**COMPLETE POPPET FOR FILTER REGULATOR**



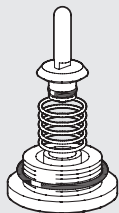
Code	Description
9250901	Spares OTR 1/4
9450901	Spares OTR 1/2

**POPPET DISASSEMBLY SPANNER (FOR REG)**



Code	Description
9220501	R cap disass. wr. 100

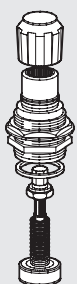
**COMPLETE POPPER FOR REGULATOR**



Code	Description
9250701	Spares OTR 1/4
9450701	Spares OTR 1/2
9650701	Spares OTR 3/4

**NOTES**

**UPPER COVER FOR REGULATOR AND FILTER REGULATOR**



Code	Description
9250801	Spares CS 1/4 02
9250802	Spares CS 1/4 04
9250803	Spares CS 1/4 08
9250804	Spares CS 1/4 012
9450801	Spares CS 1/2 04
9450802	Spares CS 1/2 08
9450803	Spares CS 1/2 12
9650801	Spares CS 3/4 04
9650802	Spares CS 3/4 08
9650803	Spares CS 3/4 12