

New deal PADLOCKABLE REGULATOR

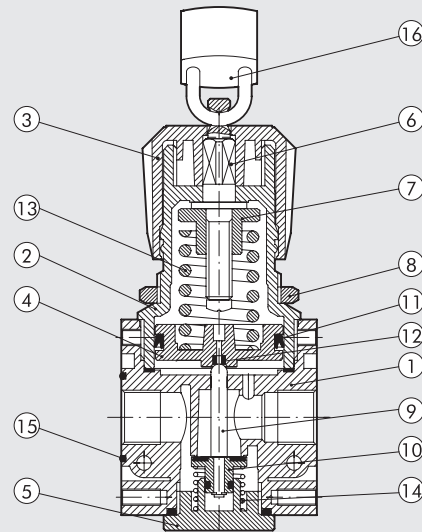
The New deal padlockable regulator has a pin with a hole in it that projects from the top of the knob. When the knob is in the push-lock position, the padlock can be inserted in the hole, preventing the knob from being operated. A padlock and two keys are supplied with the regulator.

Refer to the regulator for technical data and flow curves.

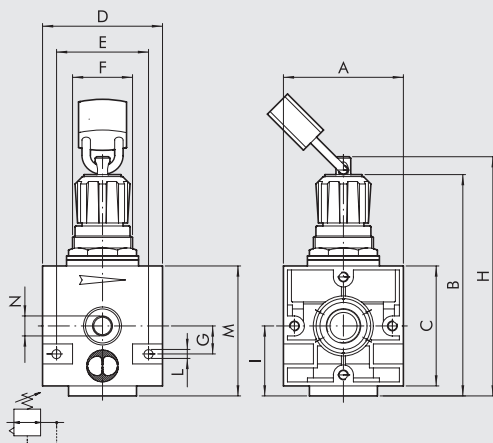


COMPONENTS

- ① Zamak body
- ② Technopolymer bell
- ③ Technopolymer knob
- ④ Technopolymer piston rod
- ⑤ Technopolymer plug
- ⑥ Nickel-plated brass OT58 adjusting screw
- ⑦ OT58 brass nut
- ⑧ Technopolymer ring nut
- ⑨ OT brass rod
- ⑩ Valve with NBR vulcanized gasket
- ⑪ NBR lip seal
- ⑫ NBR relieving seal
- ⑬ Steel adjusting spring
- ⑭ Steel valve compression spring
- ⑮ NBR gaskets
- ⑯ Padlock



DIMENSIONS



| | REG KEY ND 1/4" | REG KEY ND 3/8" | REG KEY ND 1/2" |
|-------------------------|--------------------|-----------------|--------------------|
| Threaded port | 1/4" | 3/8" | 1/2" |
| A | 42 | | 60 |
| B | 90 to 94 | | 126 to 130 |
| C | 42 | | 60 |
| D | 42 | | 60 |
| E | 32 | | 46 |
| F | 30 x 1.5 | | 38 x 2 |
| G | 10 | | 14 |
| H | 96 | | 131 |
| I | 25 | | 35 |
| L | Hole for M4 screws | | Hole for M4 screws |
| M | 49 | | 70 |
| N (pressure gauge port) | 1/8" | | 1/8" |



SYNOPTIC, SIZES AND VERSIONS

| REG KEY ELEMENT | 1/4 THREADED PORT | 02 SETTING RANGE |
|------------------------------------|-------------------------|--------------------------------------|
| REG KEY = padlockable regulator | 1/4 | 02 = 0 to 2 bar |
| | | 04 = 0 to 4 bar |
| | | 08 = 0 to 8 bar |
| | 3/8 1/2 | 012 = 0 to 12 bar |
| | | 04 = 0 to 4 bar |
| | | 08 = 0 to 8 bar 012 = 0 to 12 bar |

ORDERING CODES

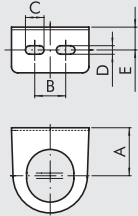
| Code | Description |
|--|-----------------|
| New deal PADLOCKABLE REGULATOR 1/4" | |
| 1210011 | REG KEY 1/4 02 |
| 1210012 | REG KEY 1/4 04 |
| 1210013 | REG KEY 1/4 08 |
| 1210014 | REG KEY 1/4 012 |
| New deal PADLOCKABLE REGULATOR 3/8" | |
| 1310012 | REG KEY 3/8 04 |
| 1310013 | REG KEY 3/8 08 |
| 1310014 | REG KEY 3/8 012 |
| New deal PADLOCKABLE REGULATOR 1/2" | |
| 1410012 | REG KEY 1/2 04 |
| 1410013 | REG KEY 1/2 08 |
| 1410014 | REG KEY 1/2 012 |

NOTES

Newdeal ACCESSORIES



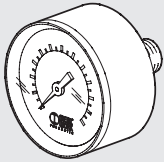
MOUNTING BRACKET FOR REG.



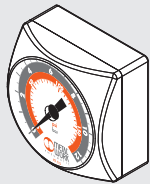
| Code | Description |
|---------|-------------|
| 9200701 | SF 1/4 |
| 9400701 | SF 1/2 |

| Code | A | B | C | D | E |
|---------|----|----|----|-----|------|
| 9200701 | 32 | 20 | 12 | 5.5 | 14.2 |
| 9400701 | 42 | 40 | 12 | 5.5 | 15 |

PRESSURE GAUGE

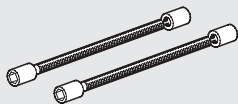


| Code | Description |
|---------|--------------|
| 9700102 | M 40 1/8 04 |
| 9700101 | M 40 1/8 012 |
| 9800102 | M 50 1/8 04 |
| 9800101 | M 50 1/8 012 |
| 9900101 | M 63 1/4 012 |

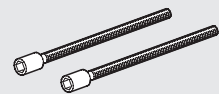


| | |
|---------|-----------------|
| 9700109 | M 40x40 1/8 04 |
| 9700110 | M 40x40 1/8 012 |

TIE RODS

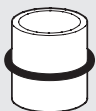


| Code | Description |
|---------|--------------------|
| 9200901 | T 1/4 F+L tie rods |
| 9400901 | T 1/2 F+L tie rods |
| 9600901 | T 3/4 F+L tie rods |



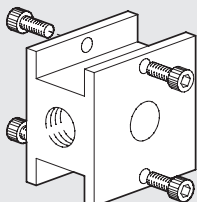
| | |
|---------|-----------------------|
| 9604402 | V3V+FR 3/4-1 tie rods |
|---------|-----------------------|

ADAPTER FOR V3V



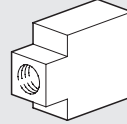
| Code | Description |
|---------|-----------------------|
| 9201001 | Adapt. X V3V+FR/D 1/4 |
| 9401001 | Adapt. X V3V+D 3/8 |
| 9401002 | Adapt. X V3V+D 1/2 |
| 9601001 | Adapt. X V3V+F 1 |

REGULATOR CONNECTION BLOCK



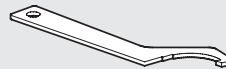
| Code | Description | Weight [g] |
|---------|--------------|------------|
| 9200501 | BC 1/4 block | 90 |
| 9400501 | BC 1/2 block | 244 |
| 9600501 | BC 3/4 block | 428 |

SPACERS FOR FRL WALL MOUNTING



| Code | Description |
|---------|---------------|
| 9200601 | DF 1/4 spacer |
| 9400601 | DF 1/2 spacer |
| 9600601 | DF 3/4 spacer |

DISASSEMBLY TOOL FOR BOWL



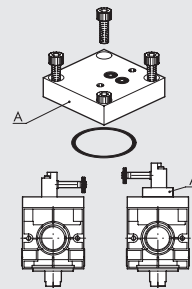
| Code | Description |
|---------|-----------------|
| 9601501 | Disassembly key |

ASSEMBLY SCREWS (2 PIECES)



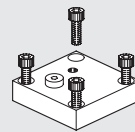
| Code | Description |
|---------|----------------------------------|
| 9250001 | CVA 1/4 screw M4x40 |
| 9250002 | CVA 1/4 screw M4x82 V3V+F+R |
| 9450001 | CVA 1/2 screw M5x55 |
| 9450002 | CVA 3/8 1/2 screw M5x60 V3V+R |
| 9450003 | CVA 3/8 1/2 screw M5x120 V3V+F+R |
| 9650001 | CVA 3/4 screw M6X70 |

REVERSE PLATE CNOMO CONTROL FOR V3V 3/4"-1"



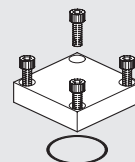
| Code | Description | Weight [g] |
|---------|--|------------|
| 9640201 | Reverse plate kit V3V cnomo control | 86 |

PLATE FOR REMOTE CONTROL FOR V3V 3/4"-1"



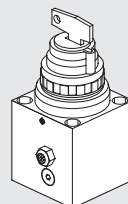
| Code | Description | Weight [g] |
|---------|--------------------------|------------|
| 9640001 | Remote control plate kit | 84 |

REG OR V3V END PLATE



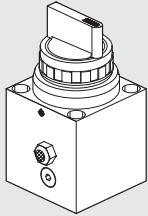
| Code | Description | Weight [g] |
|---------|---------------------------------------|------------|
| 9640101 | End plate kit for regulator or V3V | 82 |

KEY CONTROL FOR V3V 3/4"-1"



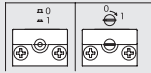
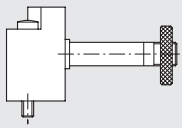
| Code | Description | Weight [g] |
|---------|-------------------------|------------|
| 9640301 | Key control kit for V3V | 364 |

MANUAL CONTROL FOR V3V 3/4"-1"



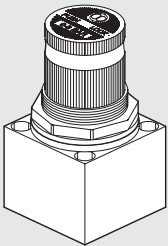
| Code | Description | Weight [g] |
|---------|----------------------------|------------|
| 9640401 | Manual control kit for V3V | 340 |

CNOMO CONTROL FOR V3V 3/4"-1"



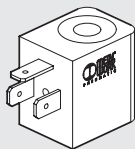
| Code | Description |
|---------|--|
| 9453920 | Elpon cnomo control kit, manual monostable |
| 9453922 | Elpon cnomo control kit, manual bistable |

PILOT REGULATOR FOR ND 3/4"-1"



| Code | Description | Weight [g] |
|---------|-------------------------|------------|
| 9640501 | 02 pilot regulator kit | 220 |
| 9640502 | 04 pilot regulator kit | 220 |
| 9640503 | 08 pilot regulator kit | 220 |
| 9640504 | 012 pilot regulator kit | 220 |

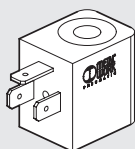
COIL 22 mm FOR V3V ELPN



| Code | Description |
|-------------|-----------------------------|
| W0215000151 | Coil 22 Ø 8 BA 2W-12VDC |
| W0215000101 | Coil 22 Ø 8 BA 2W-24VDC |
| W0215000111 | Coil 22 Ø 8 BA 3.5VA-24VAC |
| W0215000121 | Coil 22 Ø 8 BA 3.5VA-110VAC |
| W0215000131 | Coil 22 Ø 8 BA 3.5VA-220VAC |

Electrical connection DIN 43650 B-IND

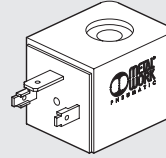
COIL 22 mm FOR V3V ELPN



| Code | Description |
|-------------|--------------------------------|
| W0215000251 | Coil 22 Ø 8 BA 2W-12VDC UR |
| W0215000201 | Coil 22 Ø 8 BA 2W-24VDC UR |
| W0215000211 | Coil 22 Ø 8 BA 3.5VA-24VAC UR |
| W0215000221 | Coil 22 Ø 8 BA 3.5VA-110VAC UR |
| W0215000231 | Coil 22 Ø 8 BA 3.5VA-220VAC UR |

Electrical connection DIN 43650 B-IND

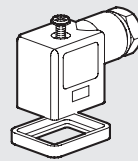
COIL 30 mm FOR V3V ELPN



| Code | Description |
|-------------|----------------------------------|
| W0210010100 | Coil 30 Ø 8 2W 24VDC |
| W0210011100 | Coil 30 Ø 8 3.5VA 24VAC 50/60HZ |
| W0210012100 | Coil 30 Ø 8 3.5VA 110VAC 50/60HZ |
| W0210013100 | Coil 30 Ø 8 3.5VA 220VAC 50/60HZ |

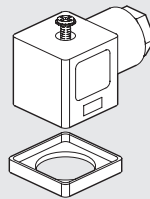
Electrical connection DIN 43650 - A

ELECTRIC CONNECTOR 22 mm FOR COILS DIN 43650 B-IND



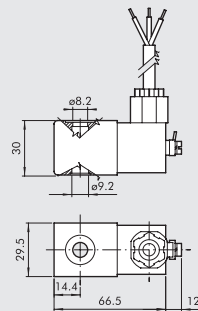
| Code | Description |
|-------------|---------------------------|
| W0970510011 | Connector standard |
| W0970510012 | Connector 22 LED 24V |
| W0970510013 | Connector 22 LED 110V |
| W0970510014 | Connector 22 LED 220V |
| W0970510015 | Connector 22 LED VDR 24V |
| W0970510016 | Connector 22 LED VDR 110V |
| W0970510017 | Connector 22 LED VDR 220V |
| W0970510070 | Connector 22 ATEX II 2 GD |

ELECTRIC CONNECTOR 30 mm FOR COILS DIN 43650-A



| Code | Description |
|-------------|-----------------------|
| W0970520033 | Connector standard |
| W0970520034 | Connector 30 LED 24V |
| W0970520035 | Connector 30 LED 110V |
| W0970520036 | Connector 30 LED 220V |
| W0970520037 | Connector 30 VDR 24V |
| W0970520038 | Connector 30 VDR 110V |
| W0970520039 | Connector 30 VDR 220V |

KIT COIL EEXM



| Code | Description |
|------------|---|
| 0227606913 | Kit for coil 30 24 VDC EEXMT5 cable 3m |
| 0227606915 | Kit for coil 30 24 VDC EEXMT5 cable 5m |
| 0227608013 | Kit for coil 30 24 VAC EEXMT5 cable 3m |
| 0227608015 | Kit for coil 30 24 VAC EEXMT5 cable 5m |
| 0227608023 | Kit for coil 30 110 VAC EEXMT5 cable 3m |
| 0227608025 | Kit for coil 30 110 VAC EEXMT5 cable 5m |
| 0227608033 | Kit for coil 30 230 VAC EEXMT5 cable 3m |
| 0227608035 | Kit for coil 30 230 VAC EEXMT5 cable 5m |

According to Atex 2014/34/EU rule,
 Ex II 2G Ex mb IIC T4/T5 Gb
 Ex II 2D Ex tb IIC T130/T95 °C IP66 Db
 N.B.: Supplied complete with adapter for Ø8 mm sleeve

KIT FOR COIL SIDE 22 IP65



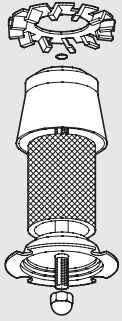
| Code | Description |
|------------|------------------------|
| 0222100100 | Kit for coil 22 - IP65 |

Improved IP65 protection, even after prolonged exposure to atmospheric agents.
 Applicable to valves with a technopolymer control.

Newdeal SPARE PARTS

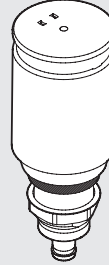


FILTER AND FILTER REGULATOR FILTERING ELEMENT



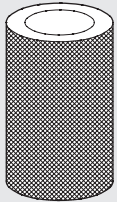
| Code | Description |
|---------|------------------|
| 9450102 | Spares FP 1/2 20 |
| 9450103 | Spares FP 1/2 4 |
| 9450101 | Spares FP 1/2 50 |
| 9250102 | Spares FP 1/4 20 |
| 9250103 | Spares FP 1/4 4 |
| 9250101 | Spares FP 1/4 50 |
| 9650103 | Spares FP 3/4 4 |
| 9650102 | Spares FP 3/4 20 |
| 9650101 | Spares FP 3/4 50 |

AUTOMATIC DRAIN (RA)



| Code | Description |
|---------|---------------------------|
| 9000802 | Spares RA automatic drain |

FILTERING ELEMENT FOR DEPURATOR



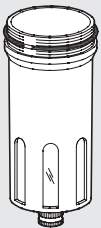
| Code | Description |
|---------|----------------------------|
| 9450105 | Spares kit FP DEP. 3/8 1/2 |

AUTOMATIC DRAIN (SAC)



| Code | Description |
|---------|----------------------------|
| 9000803 | Spares SAC automatic drain |

METAL FILTER BOWL



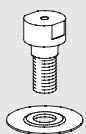
| Code | Description |
|---------|------------------------|
| 9450301 | Spares TMVF 1/2 RMSA |
| 945201 | Spares TMVF 1/2 SAC |
| 9250301 | Spares TMVF 1/4 RMSA |
| 925201 | Spares TMVF 1/4 SAC |
| 9650301 | Spares TMVF 3/4 1 RMSA |

SPRINGS FOR REGULATORS AND FILTER REGULATOR



| Code | Description |
|---------|------------------|
| 9250601 | Spares MO 02 1/4 |
| 9250602 | Spares MO 04 1/4 |
| 9250603 | Spares MO 08 1/4 |
| 9250604 | Spares MO 12 1/4 |
| 9450601 | Spares MO 04 1/2 |
| 9450602 | Spares MO 08 1/2 |
| 9450603 | Spares MO 12 1/2 |
| 9650601 | Spares MO 04 3/4 |
| 9650602 | Spares MO 08 3/4 |
| 9650603 | Spares MO 12 3/4 |

VENTURI LUBRICATOR DIAPHRAGM



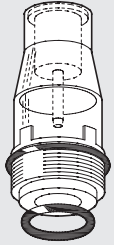
| Code | Description |
|---------|---------------------------|
| 9252001 | Spares MB 100 1/4 |
| 9352001 | Spares MB 200 1/4 3/8 1/2 |
| 9652002 | Spares MB 3/4-1 |

METAL LUBRICATOR BOWL



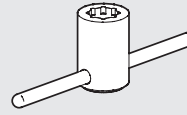
| Code | Description |
|---------|-----------------|
| 9251201 | Spares TMVL 1/4 |
| 9451201 | Spares TMVL 1/2 |
| 9651201 | Spares TMVL 3/4 |

TRANSPARENT LUBRICATOR COVER



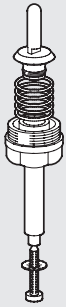
| Code | Description |
|---------|--------------------------------|
| 9251302 | Spares CVL 100-200-300-400 BIT |

DOME DISASSEMBLY SPANNER



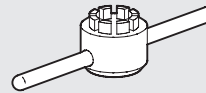
| Code | Description |
|---------|-----------------------|
| 9220701 | Acc cover LUB spanner |

COMPLETE POPPET FOR FILTER REGULATOR



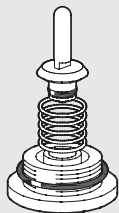
| Code | Description |
|---------|----------------|
| 9250901 | Spares OTR 1/4 |
| 9450901 | Spares OTR 1/2 |

POPPET DISASSEMBLY SPANNER (FOR REG)



| Code | Description |
|---------|-----------------------|
| 9220501 | R cap disass. wr. 100 |

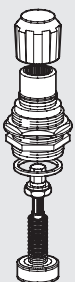
COMPLETE POPPER FOR REGULATOR



| Code | Description |
|---------|----------------|
| 9250701 | Spares OTR 1/4 |
| 9450701 | Spares OTR 1/2 |
| 9650701 | Spares OTR 3/4 |

NOTES

UPPER COVER FOR REGULATOR AND FILTER REGULATOR



| Code | Description |
|---------|-------------------|
| 9250801 | Spares CS 1/4 02 |
| 9250802 | Spares CS 1/4 04 |
| 9250803 | Spares CS 1/4 08 |
| 9250804 | Spares CS 1/4 012 |
| 9450801 | Spares CS 1/2 04 |
| 9450802 | Spares CS 1/2 08 |
| 9450803 | Spares CS 1/2 12 |
| 9650801 | Spares CS 3/4 04 |
| 9650802 | Spares CS 3/4 08 |
| 9650803 | Spares CS 3/4 12 |