

GRIPPER WITH TWO PARALLEL JAWS SERIES P2

Parallel double-acting two-jaw gripper, with either internal or external clamping, with sliding of the jaws on inclined planes.

Aluminum alloy body coated with surface hardening treatment, jaws made of wear-resistant coated steel.

The jaw-guiding system and precision in coupling with the body make the gripper extremely stable.

The ceramic-coated body reduces friction and wear, and enhances the movement of the jaws on the body.

All sizes are equipped with a magnet and sensor grooves.



TECHNICAL DATA		P2 -16	P2-20	P2- 25
Operating pressure	bar		2 to 8	
	MPa		0.2 to 0.8	
	psi		29 to 116	
Operating temperature	°C		-10 to 80	
Fluid		Fluid 20 µm filtered air, lubricated or unlubricated. If lubricated air is used, lubrication must be continuous		
Bore	mm	16	20	25
Clamping force of a single jaw at 6.3 bar, 20 mm from the upper surface, on opening and closing	N	45	100	135
Stroke of each jaw	mm	4	5	7
Minimum opening/closing time	s		0.01/0.02	
Repeatability	mm		± 0.01	
Moment of inertia around the piston axis Jy	kg cm ²	0.19	0.83	2.33
Max. admissible static loads:				
- Fa	N	225	300	545
- Mx	Nm	3	4	7
- My	Nm	1.5	2	3
- Mz	Nm	3.5	5	8
Weight	kg	0.13	0.27	0.51

COMPONENTS

- ① BODY: hard-anodized aluminium
- ② JAWS: nitrided steel
- ③ PISTON ROD + GUIDE: nitrided steel
- ④ PISTON ROD GASKET: polyurethane
- ⑤ BUSHING: bronze
- ⑥ BUFFER: polyurethane
- ⑦ PISTON: aluminium alloy
- ⑧ PISTON GASKET: NBR
- ⑨ MAGNET: plastoferrite
- ⑩ REAR BASE: anodized aluminium alloy
- ⑪ GASKET: NBR

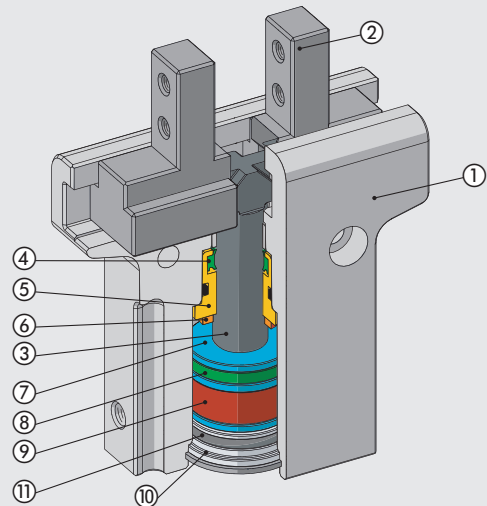
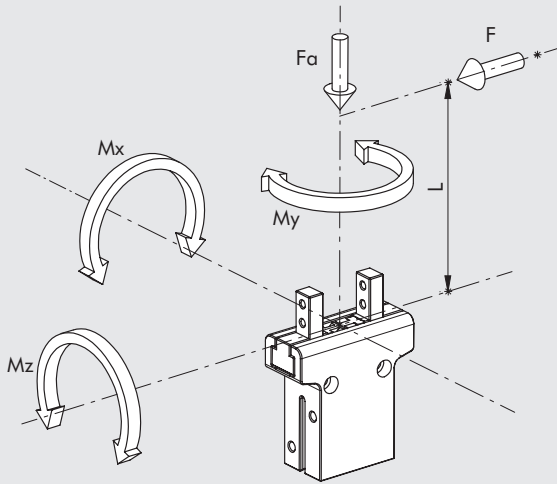
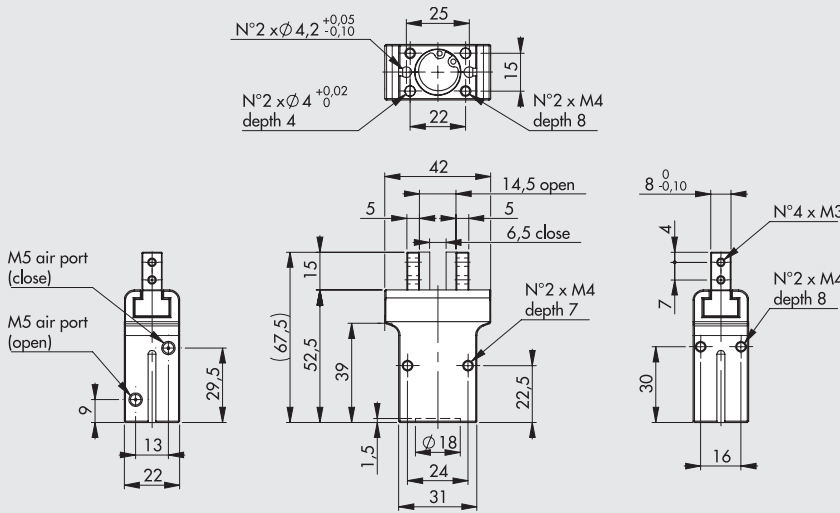


DIAGRAM OF FORCES AND MOMENTS

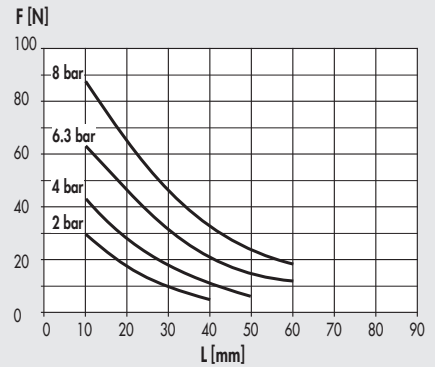


F Clamping force for each jaw
 Fa Maximum static axial force
 Mx, My, Mz Maximum static moments

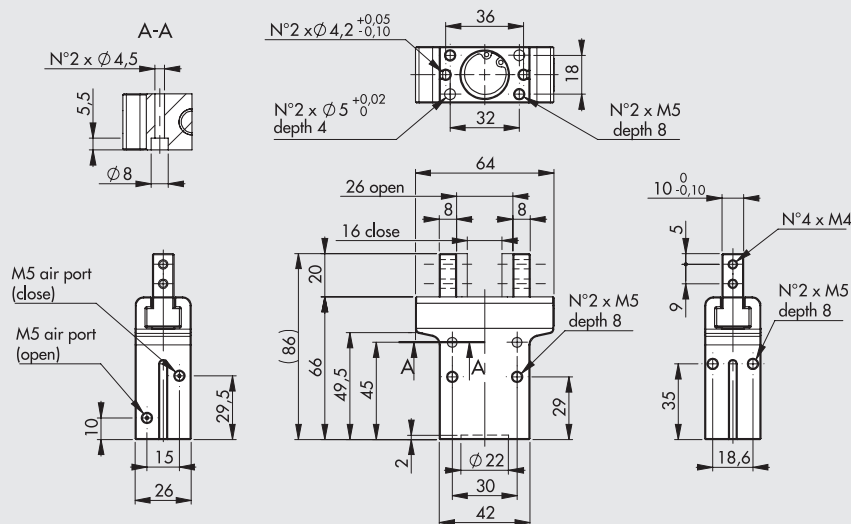
DIMENSIONS OF GRIPPER P2-16



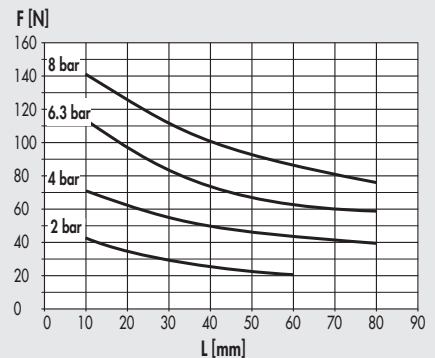
Code Description
 W1570160200 Gripper with 2 parallel jaws P2-16



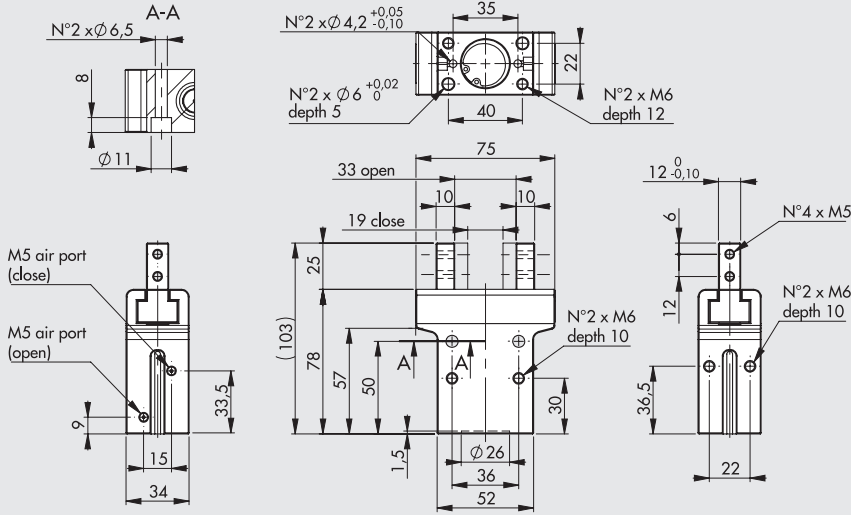
DIMENSIONS OF GRIPPER P2-20



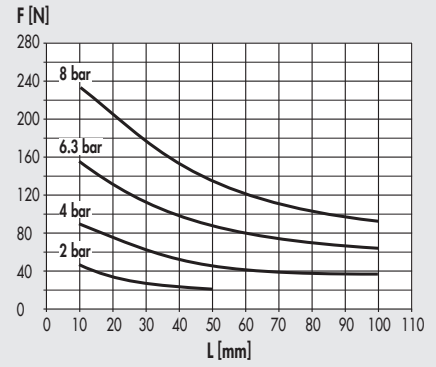
Code Description
 W1570200200 Gripper with 2 parallel jaws P2-20



DIMENSIONS OF GRIPPER P2-25

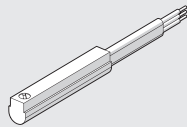


Code	Description
W1570250200	Gripper with 2 parallel jaws P2-25



ACCESSORIES

SENSOR Ø 4



For codes and technical data, see [chapter A6](#).

NOTES

Blank area for notes.