

# Holders for Light-Metal Sections HTR-STA

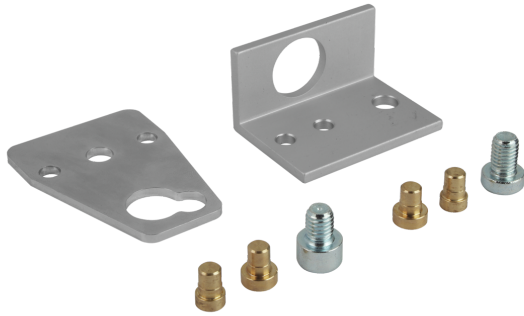
Mountings for spring plungers from M5 to G1/4"



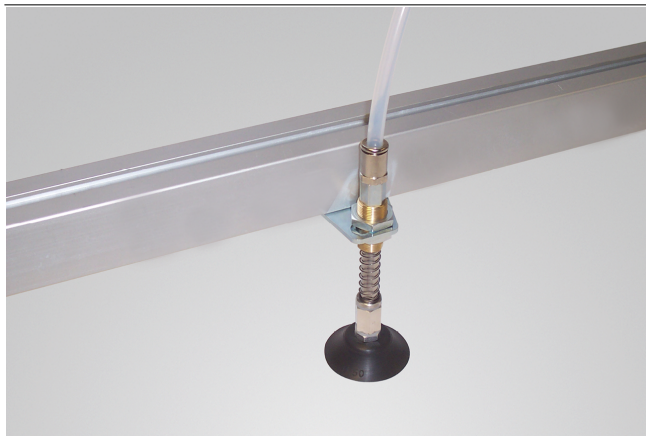
## Suitability for Industry Specific Applications

### Applications

- Holder for mounting of suction cups and spring plungers on light alloy sections



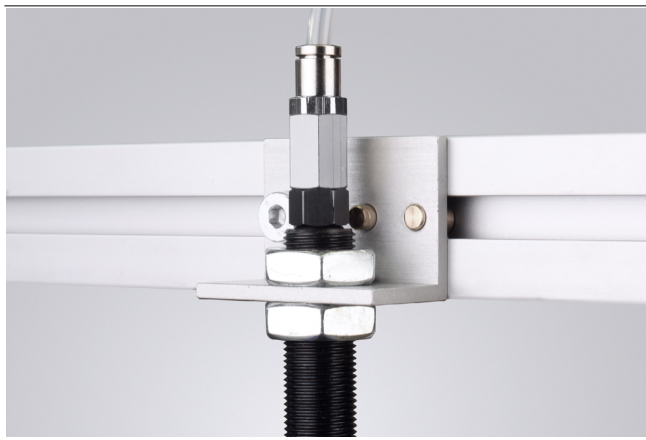
Holders for Light-Metal Sections HTR-STA



System Design Holders for Light-Metal Sections HTR-STA

### Design

- Size 47: sheet steel holder with mounting holes
- Size 55 and 62: angled aluminum bracket with mounting holes
- Delivered complete with M8 mounting screw and position locking pin



Mounting example holders HTR-STA WI

### Product Highlights

- Mounting on light metal profiles with groove for flexible use, quick changes, short set-up times
- Direct mounting of suction cups or spring plungers possible
- Versatile use, as suitable for spring plungers from M5 to G1/4"

# Holders for Light-Metal Sections HTR-STA

Mountings for spring plungers from M5 to G1/4"

## Designation Code Holders for Light-Metal Sections HTR-STA

<b>HTR-STA</b>	-	<b>55</b>	-	<b>1N</b>	-	<b>D20</b>	-	<b>WI</b>
1		2		3		4		5

### 1 – Abbreviated designation

Code	Version
HTR-STA	HTR-STA

### 2 – Length

Code	Length in mm
47...62	47 to 62

### 3 – Cross-beam connection

Code	Connection
1N	1 sliding block

### 4 – Spring plunger connection

Code	Diameter in mm
D10/D16..D30	ø 11/17 to 31

### 5 – Design

Code	Type
FL	Flat
WI	Angle

Holder for light metal sections HTR-STA is delivered as a ready-to-connect product including mounting screws and position locking pin.

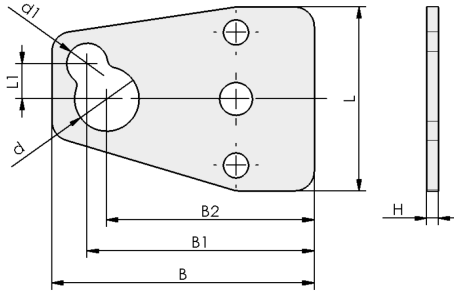
## Ordering Data Holders for Light-Metal Sections HTR-STA

Type	Part no.
HTR-STA 47 1N D10/16 FL	10.08.03.00085
HTR-STA 55 1N D20 WI	10.08.03.00086
HTR-STA 62 1N D30 WI	10.08.03.00148

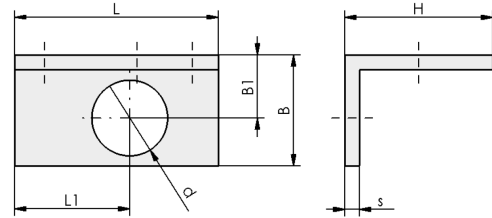
# Holders for Light-Metal Sections HTR-STA

Mountings for spring plungers from M5 to G1/4"

## Design Data Holders for Light-Metal Sections HTR-STA



HTR-STA FL



HTR-STA WI

## Holders for Light-Metal Sections HTR-STA

Mountings for spring plungers from M5 to G1/4"

### Design Data Holders for Light-Metal Sections HTR-STA

Type	B [mm]	B1 [mm]	B2 [mm]	d [mm]	d1 [mm]	H [mm]	L [mm]	L1 [mm]	s [mm]
HTR-STA 47 1N D10/16 FL	67	58	53	17	11	3	47	9	-
HTR-STA 55 1N D20 WI	30	17	-	21	-	40	55	31	4
HTR-STA 62 1N D30 WI	50	27	-	31	-	40	62	40	5