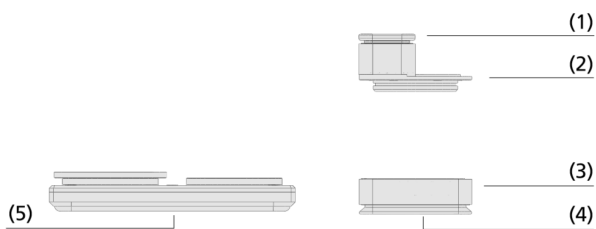


Innospann Clamping Equipment ISCUP/ISMB/ISQB

Innospann Cup, Mono-Base and Quad-Base



Innospann Clamping Equipment ISCUP/ISMB/ISQB



System design Innospann Clamping Equipment ISCUP/ISMB/ISQB



Innospann Cup and Mono-Base while clamping a wooden workpiece

Suitability for industry specific applications

Applications

- The suction cup mounts Mono-Base ISMB and Quad-Base ISQB are positioned on the Steel-Plate ISST or the Innospann Adapter-Plate ISAP
- Alternatively, the mounts ISQB or ISMB are available for direct adaptation to flat or grid tables
- The suction cups ISCUP are connected to the base and are continuously rotatable in the base
- The suction cups are available in three sizes to ensure maximum flexibility
- Variable total height through various suction cup heights and optional spacer rings

Design

- Sealing frame (1) for fixing the workpiece
- Robust main body (2) of the suction cups with suction surfaces in three different sizes and pluggable Innospann connector
- Suction cup mounting Mono-Base (3) for mounting and using individual suction cups
- Sealing frame or foam rubber sealing profile (4) downwards to machine table or Steel-Plate
- Suction cup holder Quad-Base (5) for mounting up to four suction cups

Product highlights

- Flexible use, as bases and suction cups can be freely positioned on Steel-Plate, Adapter-Plate as well as on grid and flat tables
- Modular system enables quick, easy and inexpensive replacement of wearing parts
- Adaptation to the working height with the aid of spacer rings

Innospann Clamping Equipment IScup/ISMB/ISQB

Innospann Cup, Mono-Base and Quad-Base

Designation code Innospann Clamping Equipment IScup/ISMB/ISQB

Module 1: Suction Cup



1 – Abbreviated designation

| Code | Type |
|-------|--|
| IScup | Top part of the suction cups for ISMB and ISQB |

2 – Version

| Code | Type |
|-----------|------------|
| CUP 1...4 | Cup 1 to 4 |

3 – Suction area

| Code | LxW in mm |
|------------|------------------|
| 100x100... | 100x100 to 80x28 |
| 80x28 | 80x28 |

4 – Height

| Code | Height in mm |
|-----------|--------------|
| x16...x30 | 16 to 30 |

5 – Product addition

| Code | Type |
|------|------------------|
| TV | With touch valve |

Module 2: Base



1 – Abbreviated designation

| Code | Type |
|------|---|
| ISMB | Mono-Base for Steel-Plate and Adapter-Plate |

2 – Version

| Code | Type |
|------|----------------|
| – | Steel-Plate-MS |
| G | Flat table |
| R | Grid table |

3 – Dimensions

| Code | LxWxH in mm |
|-------------|----------------------|
| 80x80x8... | 80x80x8 to 80x80x70 |
| 80x80x70 | |
| 96x96x15... | 96x96x15 to 90x90x15 |
| 90x90x15 | |

4 – Grid dimensions

| Code | Grid dimension in mm |
|-------|----------------------|
| 15/30 | 15x15 to 30x30 |
| 40x40 | 40x40 |



1 – Abbreviated designation

| Code | Type |
|------|---------------------------|
| ISQB | Quad-Base for Steel-Plate |

2 – Version

| Code | Type |
|------|----------------|
| – | Steel-Plate-MS |
| G | Flat table |
| R | Grid table |

3 – Dimensions

| Code | LxWxH in mm |
|------------|-------------|
| 175x175x22 | 175x175x22 |
| 175x175x15 | 175x175x15 |

4 – Grid dimensions

| Code | Grid dimension in mm |
|-------|----------------------|
| 30/50 | 30x30 and 50x50 |

The Innospann modular system can be constructed from two basic modules:

- Innospann Mono-Base ISMB or Innospann Quad-Base ISQB
- Innospann Suction Cup IScup







The different versions of the articles can be freely combined and extended. Cup, base and spacer rings are delivered separately.




Available spare parts: see Innospann accessories and spare parts

Innospann Clamping Equipment ISCUP/ISMB/ISQB

Innospann Cup, Mono-Base and Quad-Base

Ordering data Innospann Clamping Equipment ISCUP/ISMB/ISQB

| Type | | Part no. |
|------|---------------------------|--|
| Cup | ISCUP Cup 1 80x80x16 | 10.01.15.00209  |
| Cup | ISCUP Cup 2 80x40x16 | 10.01.15.00210  |
| Cup | ISCUP Cup 3 80x28x16 | 10.01.15.00211  |
| Cup | ISCUP Cup 4 100x100x30 | 10.01.15.00403 |
| Cup | ISCUP Cup 4 100x100x30 TV | 10.01.15.00405 |
| Cup | ISCUP Cup 1 80x80x30 | 10.01.15.00003  |
| Cup | ISCUP Cup 1 80x80x30 TV | 10.01.15.00303 |
| Cup | ISCUP 80x80x30 AS | 10.01.15.00266 |
| Cup | ISCUP Cup 2 80x40x30 | 10.01.15.00004  |
| Cup | ISCUP Cup 2 80x40x30 TV | 10.01.15.00305 |
| Cup | ISCUP Cup 3 80x28x30 | 10.01.15.00005  |

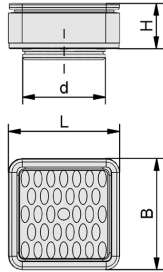
| Type | | Part no. |
|-----------|-----------------------|--|
| Mono-Base | ISMB 80x80x8 | 10.01.15.00188  |
| Mono-Base | ISMB 80x80x22 | 10.01.15.00009  |
| Mono-Base | ISMB 80x80x26 | 10.01.15.00214 |
| Mono-Base | ISMB 80x80x42 | 10.01.15.00078  |
| Mono-Base | ISMB-G 80x80x55 | 10.01.15.00128 |
| Mono-Base | ISMB-G 80x80x70 | 10.01.15.00156 |
| Mono-Base | ISMB-R 96x96x15 15/30 | 10.01.15.00286 |
| Mono-Base | ISMB-R 90x90x15 40x40 | 10.01.15.00380 |

| Type | | Part no. |
|-----------|-------------------------|----------------|
| Quad-Base | ISQB 175x175x22 | 10.01.15.00001 |
| Quad-Base | ISQB-G 175x175x22 | 10.01.15.00007 |
| Quad-Base | ISQB-R 175x175x15 30/50 | 10.01.15.00183 |

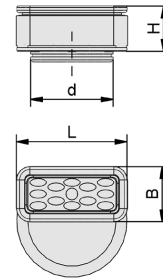
Innospann Clamping Equipment ISCUP/ISMB/ISQB

Innospann Cup, Mono-Base and Quad-Base

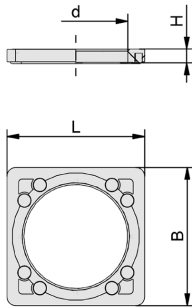
Design data Innospann Clamping Equipment ISCUP/ISMB/ISQB



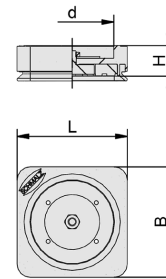
ISCUP Cup 1, ISCUP Cup 4



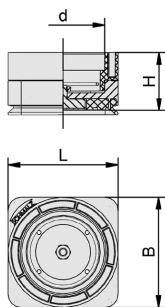
ISCUP Cup 2, ISCUP Cup 3



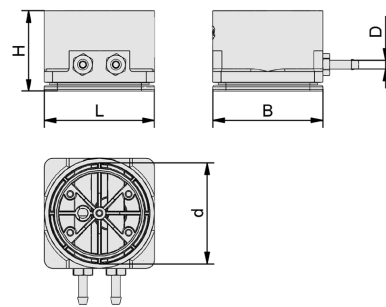
ISMB 8



ISMB 22, ISMB-T 22



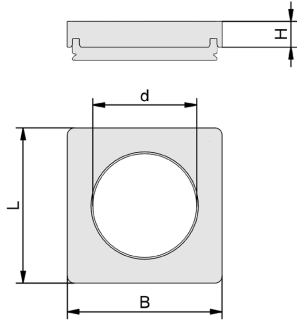
ISMB 42 - 67, ISMB-T 42 - 67



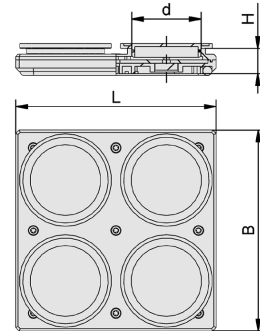
ISMB-G

Innospann Clamping Equipment ISCUP/ISMB/ISQB

Innospann Cup, Mono-Base and Quad-Base



ISMB-R



ISQB

Innospann Clamping Equipment ISCUP/ISMB/ISQB

Innospann Cup, Mono-Base and Quad-Base

Design data Innospann Clamping Equipment ISCUP/ISMB/ISQB

| Type | B [mm] | d [mm] | H [mm] | L [mm] |
|---------------------------|--------|--------|--------|--------|
| ISCUP Cup 1 80x80x16 | 80 | 60 | 16 | 80 |
| ISCUP Cup 2 80x40x16 | 40 | 60 | 16 | 80 |
| ISCUP Cup 3 80x28x16 | 28 | 60 | 16 | 80 |
| ISCUP Cup 1 80x80x30 | 80 | 60 | 30 | 80 |
| ISCUP Cup 2 80x40x30 | 40 | 60 | 30 | 80 |
| ISCUP Cup 3 80x28x30 | 28 | 60 | 30 | 80 |
| ISCUP Cup 1 80x80x30 TV | 80 | 60 | 30 | 80 |
| ISCUP Cup 2 80x40x30 TV | 40 | 60 | 30 | 80 |
| ISCUP Cup 4 100x100x30 | 100 | 60 | 30 | 100 |
| ISCUP Cup 4 100x100x30 TV | 100 | 60 | 30 | 100 |

| Type | B [mm] | D [mm] | d [mm] | H [mm] | L [mm] |
|-------------------------|--------|--------|--------|--------|--------|
| ISMB 80x80x8 | 80 | - | 60 | 8 | 80 |
| ISMB 80x80x22 | 80 | - | 60 | 22 | 80 |
| ISMB 80x80x42 | 80 | - | 60 | 42 | 80 |
| ISMB-G 80x80x55 | 80 | 6 | 60 | 55 | 80 |
| ISMB-G 80x80x70 | 80 | 6 | 60 | 70 | 80 |
| ISMB-R 90x90x15 40x40 | 90 | - | 60 | 15 | 90 |
| ISMB-R 96x96x15 15/30 | 96 | - | 60 | 15 | 96 |
| ISMB-R 110x110x15 50x50 | 110 | - | 60 | 15 | 110 |

| Type | B [mm] | d [mm] | H [mm] | L [mm] |
|-------------------------|--------|--------|--------|--------|
| ISQB 175x175x22 | 175 | 60 | 22 | 175 |
| ISQB-G 175x175x22 | 175 | 60 | 22 | 175 |
| ISQB-R 175x175x15 30/50 | 175 | 60 | 15 | 175 |