

# Innospann Steel-Plate ISST-MPL and Vacuum Blocks ISBL

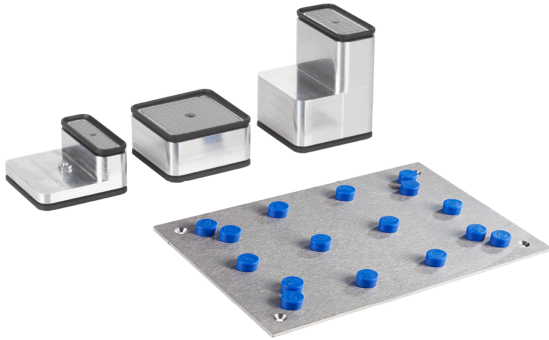
Steel-Plate and vacuum blocks for use on Matrix-Plate MPL



## Suitability for industry specific applications

### Applications

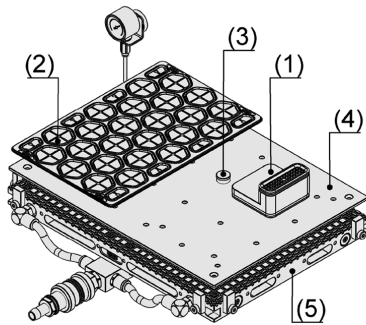
- Modular clamping system for precise metal and plastic machining
- The Steel-Plate is mounted vacuum-tight on a Schmalz Matrix-Plate
- Aluminum vacuum blocks ISBL are positioned flexibly over the vacuum openings without hoses and are magnetically pre-fixed; vacuum openings that are not required are sealed vacuum-tight with sealing magnets
- All processed materials are specially optimized for use under cooling lubricants
- Instead of the vacuum blocks ISBL, FlexMat SFM can also be used on the Steel-Plates



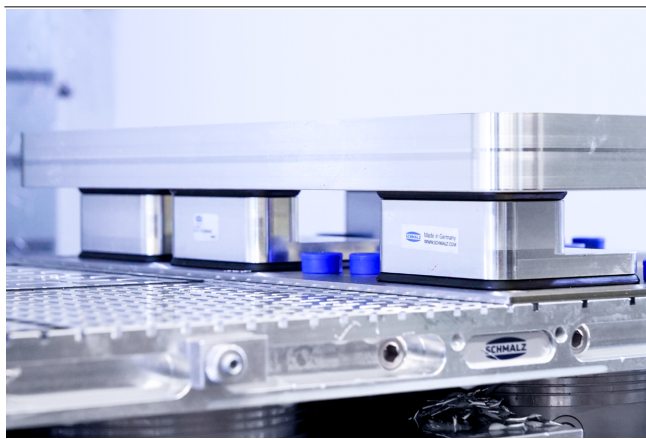
Innospann Steel-Plate ISST-MPL and Vacuum Blocks ISBL

### Design

- Vacuum blocks ISBL made of aluminum (1) with double seal and magnetic pre-fixation on the Steel-Plate
- Schmalz FlexMat SFM (2) for use directly on the Steel-Plate
- Sealing magnets (3) for unused vacuum openings when used with vacuum blocks ISBL
- Steel-Plate with vacuum openings (4)
- Matrix-Plate MPL (5) as basic unit of the modular clamping system



System design Innospann Steel-Plate ISST-MPL and Vacuum Blocks ISBL



### Product highlights




- Simple and fast setup by using the modular system on the Matrix-Plate MPL
- In combination with vacuum blocks ISBL, optimal for cutouts and 5-axis machining with few setups
- Vacuum blocks ISBL are flexible in terms of position, dimensions and height and thus enable the clamping of a wide variety of workpiece geometries
- Durable and resistant to cooling lubricants due to the use of aluminum, stainless steel and robust elastomers
- Clamping system can be expanded at any time and thus easily adapted to new requirements and workpieces

## Innospann Steel-Plate ISST-MPL and Vacuum Blocks ISBL

Steel-Plate and vacuum blocks for use on Matrix-Plate MPL

### Ordering data Innospann Steel-Plate ISST-MPL and Vacuum Blocks ISBL

Type	Part no.
ISST-MPL 300x200x3	10.01.28.00018
ISST-MPL 400x300x3	10.01.28.00019
ISST-MPL 600x400x3	10.01.28.00020

Type	Part no.
ISBL-HD 80x28x38	10.01.15.00656 
ISBL-HD 80x28x97	10.01.15.00659
ISBL-HD 80x40x38	10.01.15.00655 
ISBL-HD 80x40x97	10.01.15.00658
ISBL-HD 80x80x38	10.01.15.00654 
ISBL-HD 80x80x97	10.01.15.00657

### Ordering data Spare parts Innospann Steel-Plate ISST-MPL and Vacuum Blocks ISBL

Spare parts	Part no.
Sealing cord DI-SCHN 3 MOS CR-20	10.07.04.00088
Sealing cord DI-SCHN 3.5 MOS CR-20	10.07.04.00091
Sealing magnet ISMST 19-7 4ISMST	10.01.14.00847

Type	LxW [mm]	Spare parts	Part no.
ISBL-HD 80x80x38	80x80	Sealing frame ISDR 81x81x12 Cup 1 NBR-50	10.01.15.00158
ISBL-HD 80x40x38	80x40	Sealing frame ISDR 81x81x12 Cup 1 NBR-50	10.01.15.00158

Type	LxW [mm]	Spare parts	Part no.
ISBL-HD 80x40x38	80x40	Sealing frame ISDR 81x43x12 Cup 2 NBR-50	10.01.15.00418
ISBL-HD 80x28x38	80x28	Sealing frame ISDR 81x31x12 Cup 3 NBR-50	10.01.15.00419
ISBL-HD 80x40x97	80x40	Sealing frame ISDR 81x43x12 Cup 2 NBR-50	10.01.15.00418
ISBL-HD 80x28x97	80x28	Sealing frame ISDR 81x31x12 Cup 3 NBR-50	10.01.15.00419

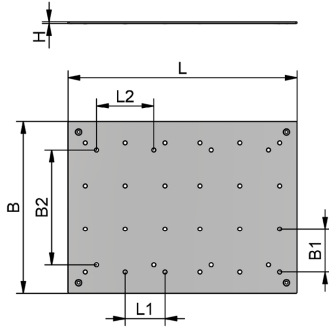
### Ordering data Accessories Innospann Steel-Plate ISST-MPL and Vacuum Blocks ISBL

Accessories	Part no.
Schmalz FlexMat SFM-298.5x198.5	10.01.28.00005

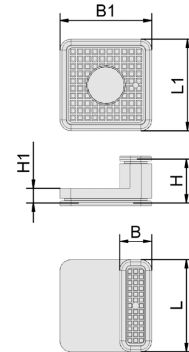
# Innospann Steel-Plate ISST-MPL and Vacuum Blocks ISBL

Steel-Plate and vacuum blocks for use on Matrix-Plate MPL

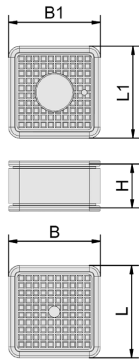
## Design data Innospann Steel-Plate ISST-MPL and Vacuum Blocks ISBL



ISST-MPL



ISBL 80x28 - ISBL 80x40



ISBL 80x80

## Innospann Steel-Plate ISST-MPL and Vacuum Blocks ISBL

Steel-Plate and vacuum blocks for use on Matrix-Plate MPL

### Design data Innospann Steel-Plate ISST-MPL and Vacuum Blocks ISBL

Type	B [mm]	B1 [mm]	B2 [mm]	H [mm]	L [mm]	L1 [mm]	L2 [mm]
ISST-MPL 300x200x3	200	69.5	100	3	300	75.0	200
ISST-MPL 400x300x3	300	75.0	200	3	400	69.5	100
ISST-MPL 600x400x3	400	69.5	100	3	600	75.0	200

Type	B [mm]	B1 [mm]	H [mm]	L [mm]	L1 [mm]
ISBL-HD 80x28x38	28	80	38.0	80	80
ISBL-HD 80x28x97	28	80	97.0	80	80
ISBL-HD 80x40x38	40	80	38.0	80	80
ISBL-HD 80x40x97	40	80	97.0	80	80
ISBL-HD 80x80x38	80	80	38.0	80	80
ISBL-HD 80x80x97	80	80	97.0	80	80

### Multimedia product presentation

Medium	Link
Product video	<a href="https://vimeo.com/701942810">https://vimeo.com/701942810</a>