

STAINLESS STEEL ISO 15552 CYLINDER

Stainless steel cylinders made to ISO 15552 available in various versions and with a wide range of accessories:

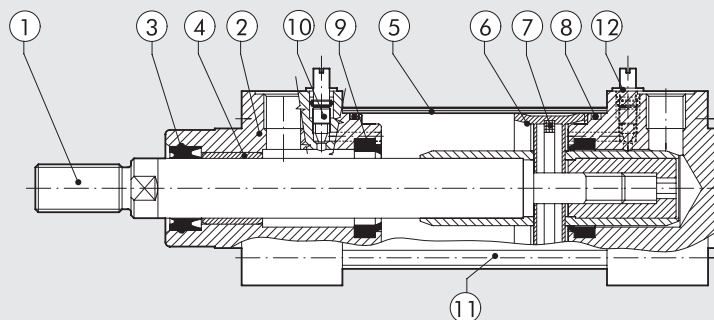
- with or without magnet execution
- double-acting – single- or through-rod
- gaskets: Polyurethane or FKM/FPM (for high temperatures)
- fixing accessories.



TECHNICAL DATA		Ø32	Ø40	Ø50	Ø63	Ø80	Ø100	Ø125
Max operating pressure	bar				10			
	MPa				1			
	psi				145			
Temperature range	POLYURETHANE °C				-20 to +80			
	FKM/FPM °C				-10 to +150 (non-magnetic cylinders)			
Design					Heads with tie rods			
Fluid					Unlubricated air. Lubrication, if used, must be continuous			
Standard strokes †	mm				0 to 1000			
Versions					Double-acting cushioned, Double-acting through-rod cushioned			
Sensor magnet					Available magnetic and non-magnetic versions.			
Weights					See cylinder "General technical data" at the beginning of the chapter			
Notes					† Maximum recommended strokes. Higher values can create operating problems			
					These cylinder series cannot mount the rod lock, if necessary contact our sales offices.			

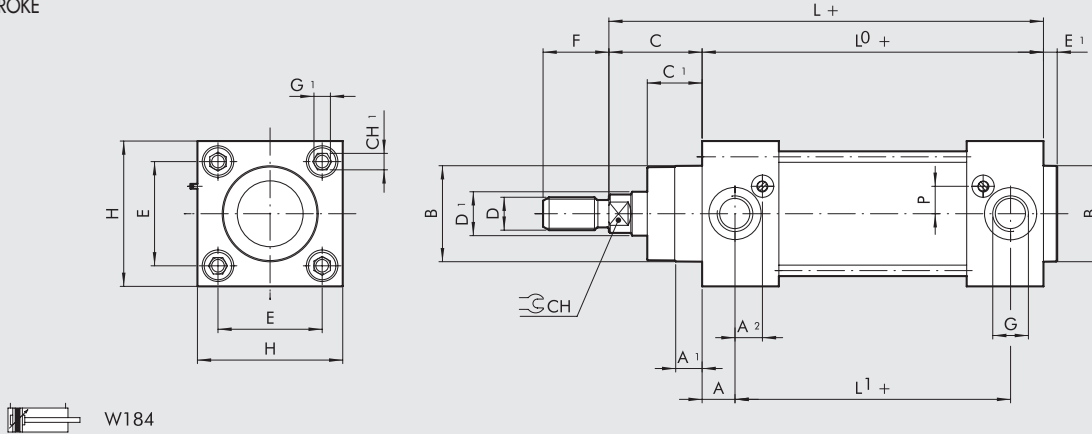
COMPONENTS

- ① PISTON ROD: AISI 316 steel
- ② HEAD: AISI 304 steel
- ③ PISTON ROD GASKET: polyurethane or FKM/FPM
- ④ GUIDE BUSHING: sintered bronze
- ⑤ BARREL: AISI 304 steel
- ⑥ ENBLOC GASKET: NBR or FKM/FPM
- ⑦ MAGNET: plastoferrite
- ⑧ Static O-rings: NBR or FKM/FPM
- ⑨ CUSHIONING GASKET: polyurethane or FKM/FPM
- ⑩ CUSHIONING NEEDLE: AISI 304 steel
- ⑪ TIE ROD: AISI 316 steel
- ⑫ NEEDLE-RETAINING RING: technopolymer



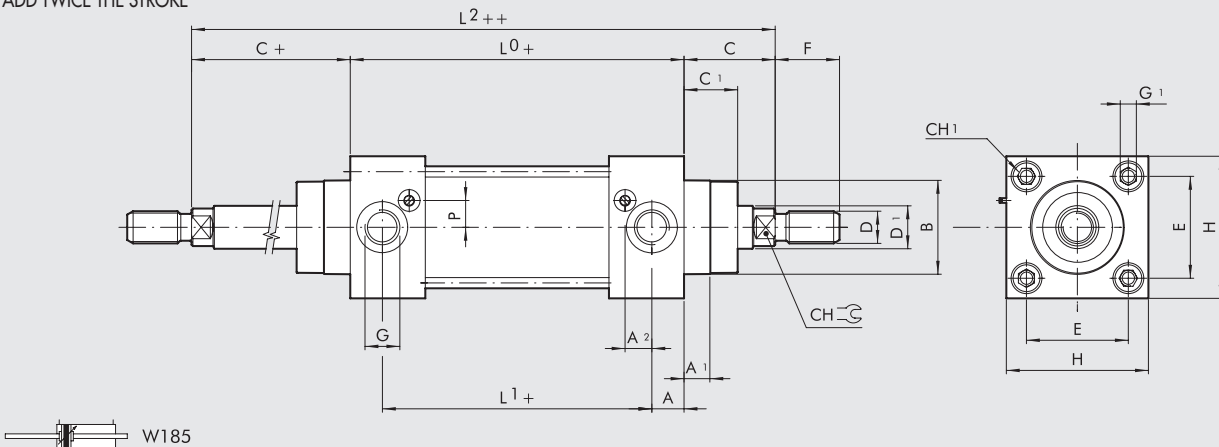
DIMENSIONS OF DOUBLE-ACTING

+ = ADD STROKE



DIMENSIONS DOUBLE-ACTING THROUGH-ROD

+ = ADD STROKE
 ++ = ADD TWICE THE STROKE



Ø.	A	A ₁	A ₂	B	C	C ₁	CH	CH ₁	D	D ₁	E	E ₁	F	G	G ₁	H	L	L ₀	L ₁	L ₂	P
32	13	9	11.3	30	26	18	10	6	M10x1.25	12	32.5	4	22	G1/8	M6	50	120	94	68	146	6
40	14	9	13	35	30	22	13	6	M12x1.25	16	38	4	24	G1/4	M6	55	135	105	77	165	8
50	14	9	12.7	40	37	25.5	17	8	M16x1.5	20	46.5	4	32	G1/4	M8	65	143	106	78	180	11.8
63	16	9	15.8	45	37	25	17	8	M16x1.5	20	56.5	4	32	G3/8	M8	75	158	121	89	195	11.7
80	17	10	16.3	45	46	35	22	-	M20x1.5	25	72	4	40	G3/8	M10	95	174	128	94	220	15.5
100	18	10	15.5	55	51	38	22	-	M20x1.5	25	89	4	40	G1/2	M10	110	189	138	102	240	15.5
125	18	11	20	60	65	46	27	-	M27x2	32	110	6	54	G1/2	M12	140	225	160	124	290	15

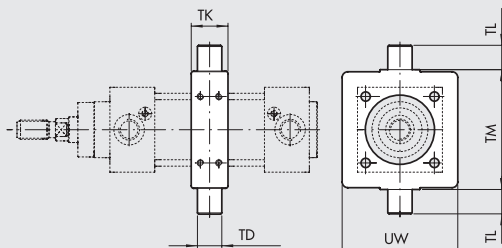
KEY TO CODES

W 1 8	4 TYPE	0 VERSION	3 2 DIAMETER	0 0 3 2 STROKE
Stainless steel cylinder	4 DAMC 5 DAMC through-rod	0 Standard (magnetic) S Non-magnetic ● V FKM/FPM gasket	32 40 50 63 80 ■ 100 ■ 125	+ 0 to 1000 mm

DAMC: Magnetic double-acting (cushioned)
 + Maximum recommended strokes. Higher values can create operating problems
 ● For this version the cylinder will be not magnetic
 ■ In the code of cylinder with letter in fifth position Ø 100 becomes A1; Ø 125 becomes A2

ACCESSORIES FOR STAINLESS ISO 15552 CYLINDER: FIXINGS

STAINLESS STEEL INTERMEDIATE HINGE - MODEL EN

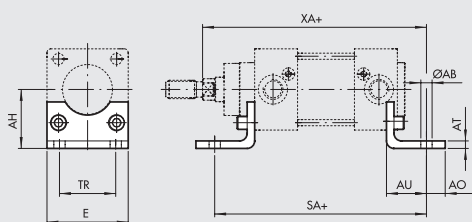


Code	Ø	TM	TL	TD	TK	UW	Weight [g]
W095X322007	32	50	12	12	15	46	140
W095X402007	40	63	16	16	20	59	330
W095X502007	50	75	16	16	20	69	390
W095X632007	63	90	20	20	25	84	730
W095X802007	80	110	20	20	25	102	925
W095XA12007	100	132	25	25	30	125	1700
W095XA22007	125	160	25	25	32	155	2580

Note: Supplied complete with 8 grub screws

STAINLESS STEEL SHORT FOOT MOUNTING

+ = ADD THE STROKE

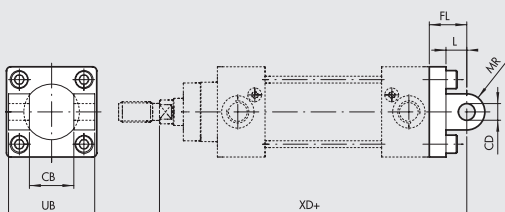


Code	Ø	Ø AB	AH	AO	AT	AU	TR	E	XA	SA	Weight [g]
W095X322001	32	7	32	11	4	24	32	45	145	143	85
W095X402001	40	9	36	8	4	28	36	52	163	161	95
W095X502001	50	9	45	15	5	32	45	65	175	170	200
W095X632001	63	9	50	13	5	32	50	75	190	185	225
W095X802001	80	12	63	14	6	41	63	95	215	210	435
W095XA12001	100	14	71	16	6	41	75	115	230	220	555
W095XA22001	125	16	90	25	8	45	90	140	270	250	1145

Note: Individually packed with 2 screws

STAINLESS STEEL FEMALE HINGE - MODEL B

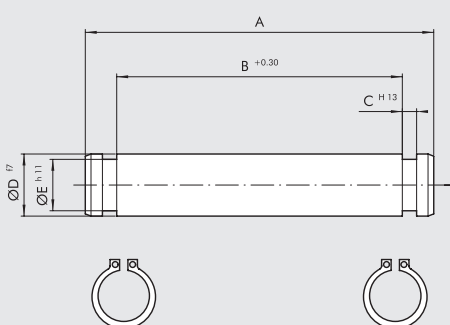
+ = ADD THE STROKE



Code	Ø	UB	CB ^{H14}	FL	CD ^{H9}	XD	MR	L	Weight [g]
W095X322003	32	45	26	22	10	142	10	13	175
W095X402003	40	52	28	25	12	160	12	16	250
W095X502003	50	60	32	27	12	170	12	16	425
W095X632003	63	70	40	32	16	190	16	21	635
W095X802003	80	90	50	36	16	210	16	22	1270
W095XA12003	100	110	60	41	20	230	20	27	2000
W095XA22003	125	130	70	50	25	275	25	30	3715

Note: Supplied with 4 screws. WITHOUT PIN.

STAINLESS STEEL FEMALE HINGE PIN

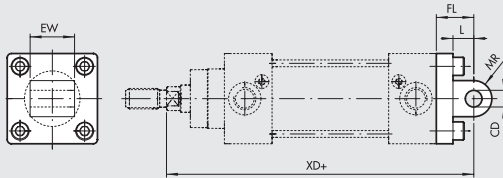


Code	Ø	A	B	C	D	E	Weight [g]
W095X322050	32	53	46	1.1	10	9.6	35
W095X402050	40	60	53	1.1	12	11.5	55
W095X502050	50	68	61	1.1	12	11.5	65
W095X632050	63	78	71	1.1	16	15.2	125
W095X802050	80	98	91	1.1	16	15.2	160
W095XA12050	100	118	111	1.3	20	19	295
W095XA22050	125	139	132	1.3	25	23.9	540

Note: Supplied with 2 snap-rings

STAINLESS STEEL MALE HINGE - MODEL BA

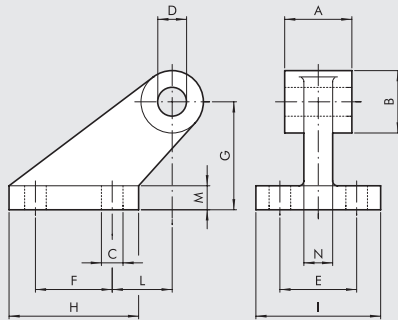
+ = ADD THE STROKE



Code	Ø	EW	FL	MR	CD ^{H9}	L	XD	Weight [g]
W095X322004	32	26	22	10	10	13	143	195
W095X402004	40	28	25	12	12	16	160	265
W095X502004	50	32	27	12	12	16	170	445
W095X632004	63	40	32	16	16	21	190	715
W095X802004	80	50	36	16	16	22	210	1375
W095XA12004	100	60	41	20	20	27	230	2165
W095XA22004	125	70	50	25	25	30	275	3800

Note: Supplied with 4 screws

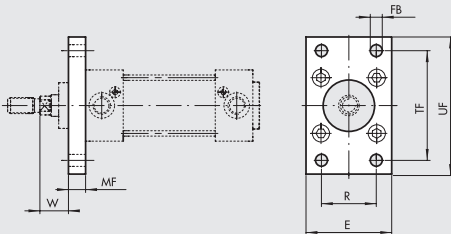
STAINLESS STEEL ISO COUNTER-HINGE FOR MODEL B - MODEL GL



Code	Ø	A	B	C	D	E	F	G	H	I	L	M	N	Weight [g]
W095X322008	32	26	20	6.6	10	38	18	32	31	51	3	8	10	165
W095X402008	40	28	22	6.6	12	41	22	36	35	54	2	10	15	235
W095X502008	50	32	26	9	12	50	30	45	45	65	3	12	16	460
W095X632008	63	40	30	9	16	52	35	50	50	67	2	14	16	590
W095X802008	80	50	30	11	16	66	40	63	60	86	7	14	20	1000
W095XA12008	100	60	38	11	20	76	50	71	70	96	5	17	20	1515
W095XA22008	125	70	45	14	25	94	60	90	90	124	10	20	30	3170

Note: Individually packed

STAINLESS STEEL FRONT FLANGE - MODEL C

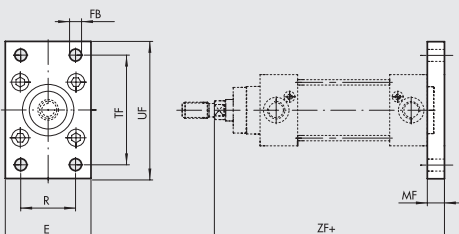


Code	Ø	UF	TF	E	R	MF	FB	W	Weight [g]
W095X322002	32	80	64	45	32	10	7	16	220
W095X402002	40	90	72	52	36	10	9	20	280
W095X502002	50	110	90	65	45	12	9	25	540
W095X632002	63	120	100	75	50	12	9	25	680
W095X802002	80	150	126	95	63	16	12	30	1550
W095XA12002	100	170	150	115	75	16	14	35	2100
W095XA22002	125	205	180	140	90	20	16	45	3950

Note: Supplied with 4 screws

STAINLESS STEEL REAR FLANGE - MODEL C

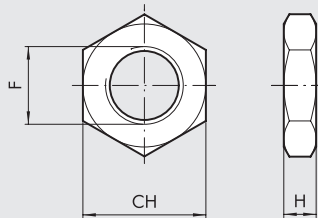
+ = ADD THE STROKE



Code	Ø	UF	TF	E	R	MF	FB	ZF	Weight [g]
W095X322002	32	80	64	45	32	10	7	130	220
W095X402002	40	90	72	52	36	10	9	145	280
W095X502002	50	110	90	65	45	12	9	153	540
W095X632002	63	120	100	75	50	12	9	168	680
W095X802002	80	150	126	95	63	16	12	184	1550
W095XA12002	100	170	150	115	75	16	14	199	2100
W095XA22002	125	205	180	140	90	20	16	235	3950

Note: Supplied with 4 screws

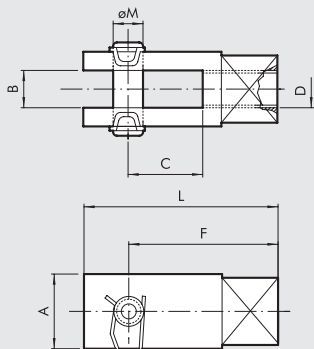
STAINLESS STEEL NUT FOR PISTON RODS



Code	Ø	F	H	CH	Weight [g]
W095X322011	32	M10x1.25	6	17	8
W095X402011	40	M12x1.25	6	19	11
W095X502011	50	M16x1.5	8	24	18
W095X502011	63	M16x1.5	8	24	18
W095X802011	80	M20x1.5	10	30	31
W095X802011	100	M20x1.5	10	30	31
W095XA22011	125	M27x2	13.5	41	81

Note: Individually packed

STAINLESS STEEL FORK-MODEL GK-M



Code	Ø	A	B	C	D	F	L	Ø M	Weight [g]
W095X322020	32	20	10	20	M10x1.25	40	52	10	90
W095X402020	40	24	12	24	M12x1.25	48	62	12	145
W095X502020	50	32	16	32	M16x1.5	64	83	16	325
W095X502020	63	32	16	32	M16x1.5	64	83	16	325
W095X802020	80	40	20	40	M20x1.5	80	105	20	680
W095X802020	100	40	20	40	M20x1.5	80	105	20	680

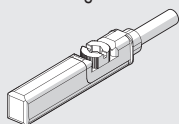
Note: Individually packed

ACCESSORIES: MAGNETIC SENSORS

RETRACTABLE SENSOR

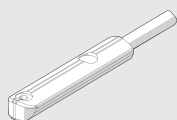
SENSOR, SQUARE TYPE

Latest generation, secure fixing



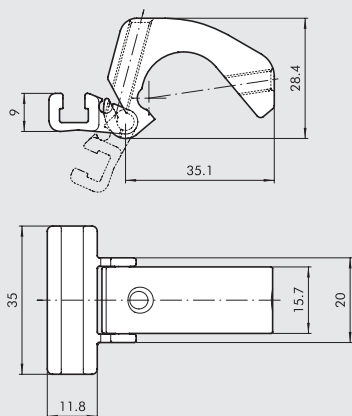
SENSOR, OVAL TYPE

Traditional



For codes and technical data, see chapter A6.

SENSOR BRACKET



Code	Bore	Description
W0950001100	32 to 125	Sensor bracket

Note: Individually packed

MATERIAL
 Bracket: aluminium
 Sensor holder: aluminium
 Fixing screw: stainless steel