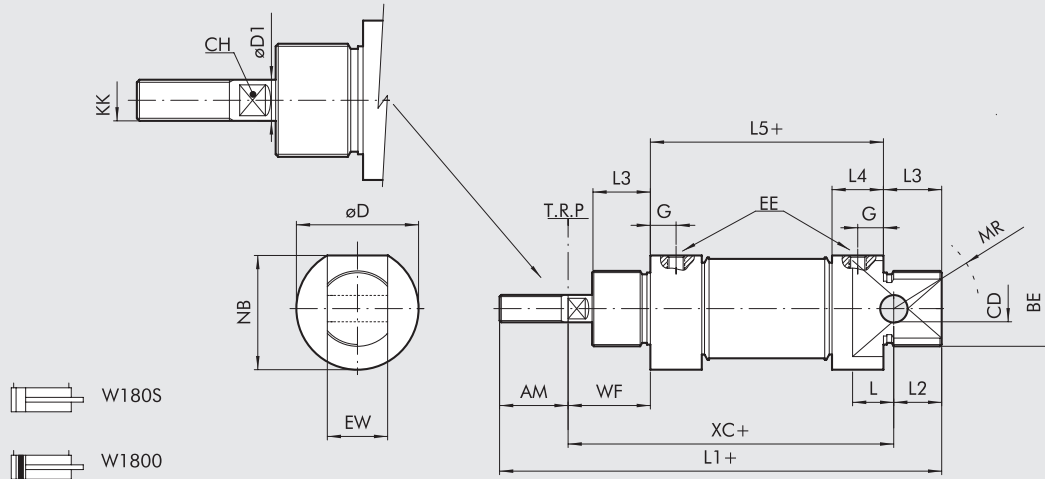


DIMENSIONS OF DOUBLE-ACTING

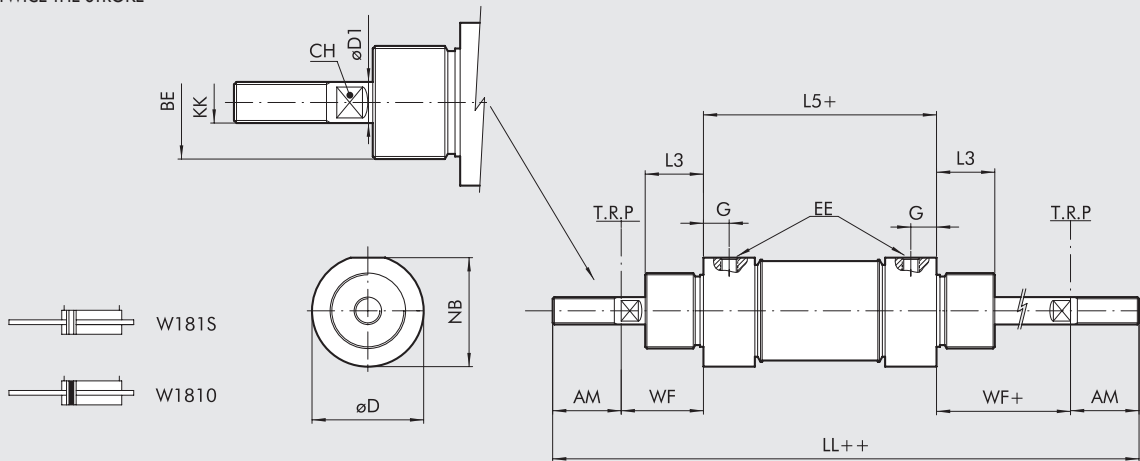
+ = ADD STROKE



Ø	AM	BE	øCD ^{H9}	CH	øD	øD1	EE	EW ^{d13}	G	KK	L	L1	L2	L3	L5	MR	NB	WF	XC
16	16	M16x1.5	6	5	19	6	M5	12	5	M6	9	109	11	18	53	16	18	22	82
20	20	M22x1.5	8	7	27	8	G 1/8	16	8	M8	12	131	16	20	67	18	25.5	24	95
25	22	M22x1.5	8	9	30	10	G 1/8	16	8	M10x1.25	12	140	14	22	68	21	28.5	28	104

DIMENSIONS DOUBLE-ACTING THROUGH-ROD

+ = ADD STROKE
++ = ADD TWICE THE STROKE



Ø	AM	BE	CH	øD	øD1	EE	G	KK	LL	L3	L5	NB	WF ^{±1,2}
16	16	M16x1.5	5	19	6	M5	5	M6	129	18	53	18	22
20	20	M22x1.5	7	27	8	G 1/8	8	M8	155	20	67	25.5	24
25	22	M22x1.5	9	30	10	G 1/8	8	M10x1.25	168	22	68	28.5	28

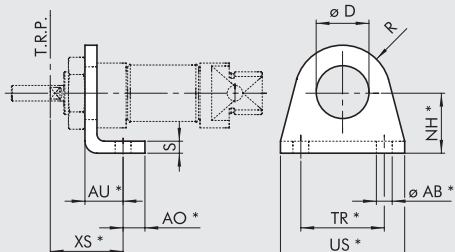
KEY TO CODES

W 1 8	0	0	1 6	0 0 2 0
	TYPE	VERSION	DIAMETER	STROKE
Stainless steel cylinder	0 DAM 1 DAM through-rod	0 Standard (magnetic) S Non-magnetic ● V FKM/FPM gasket	16 20 25	+ 0 to 500 mm

DAM: Magnetic double-acting (non-cushioned)
 + Maximum recommended strokes. Higher values can create operating problems
 ● For this version the cylinder will be not magnetic

ACCESSORIES FOR STAINLESS STEEL ISO 6432 MINI-CYLINDER: FIXINGS

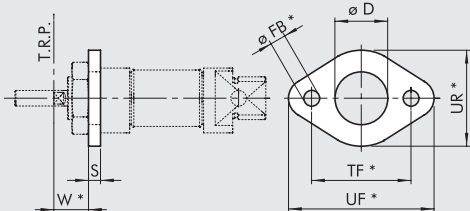
STAINLESS STEEL LEG MODEL A



Code	Ø	ØAB	AU	AO	D	NH	XS ^{±1.4}	R	S	TR	US	Weight [g]
W095X120001	16	5.5	14	6	16.1	20	22	13	4	32	42	42
W095X200001	20	6.6	17	8	22.1	25	36	20	5	40	54	90
W095X200001	25	6.6	17	8	22.1	25	40	20	5	40	54	90

*ISO 6432 values
Note: Individually packed

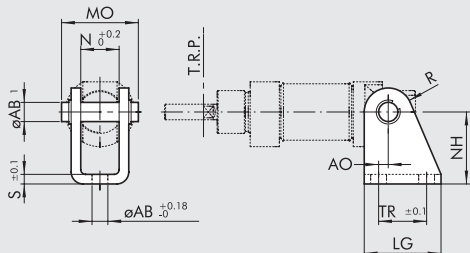
STAINLESS STEEL FLANGE MODEL C



Code	Ø	D	FB	W ^{±1.4}	S	TF	UF	UR	Weight [g]
W095X120002	16	16	5.5	18	4	40	52	30	26
W095X200002	20	22	6.6	19	5	50	66	40	52
W095X200002	25	22	6.6	23	5	50	66	40	52

*ISO 6432 values
Note: Individually packed

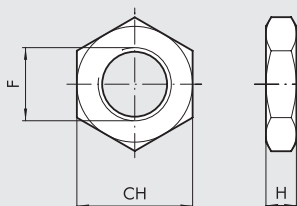
STAINLESS STEEL COUNTER-HINGE MODEL BC



Code	Ø	AB1	AB	AO	LG	MO	N	NH	R	S	TR	Weight [g]
W095X120005	16	6	5.5	2	25	24	12.1	27	7	3	15	40
W095X200005	20	8	6.6	4	32	31	16.1	30	10	4	20	78
W095X200005	25	8	6.6	4	32	31	16.1	30	10	4	20	78

Note: Supplied complete with 1 pin and 2 snap rings

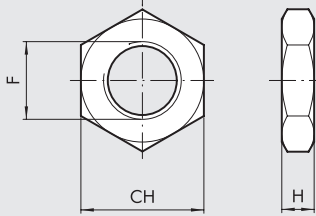
STAINLESS STEEL NUT FOR HEADS



Code	Ø	CH	F	H
W095X120010	16	22	M16x1.5	5
W095X200010	20	27	M22x1.5	8
W095X200010	25	27	M22x1.5	8

Note: Individually packed

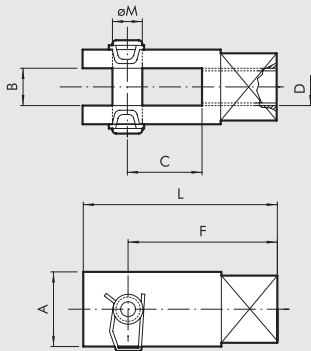
STAINLESS STEEL NUT FOR PISTON RODS



Code	Ø	CH	F	H	Weight [g]
W095X120011	16	10	M6	4	1
W095X200011	20	13	M8	5	3
W095X322011	25	17	M10x1.25	6	7

Note: Individually packed

STAINLESS STEEL FORK-MODEL GK-M



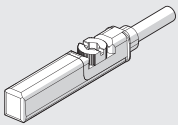
Code	Ø	A	B	C	D	F	L	ØM
W095X120020	16	12	6	12	M6	24	31	6
W095X200020	20	16	8	16	M8	32	42	8
W095X322020	25	20	10	20	M10x1.25	40	52	10

Note: Individually packed

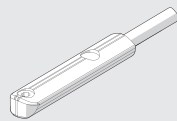
ACCESSORIES: MAGNETIC SENSORS

RETRACTABLE SENSOR

SENSOR, SQUARE TYPE
Latest generation,
secure fixing

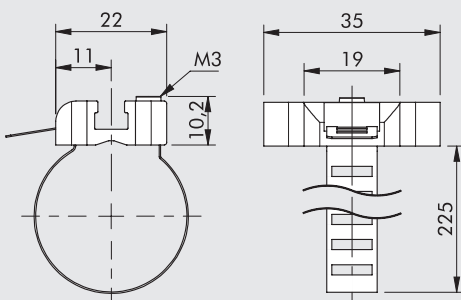


SENSOR, OVAL TYPE
Traditional



For codes and technical data, see **chapter A6**.

SENSOR BRACKET



Code	Bore	Description
W0950001103	16 to 25	Sensor bracket 8 to 63

Note: Individually packed

MATERIAL
Bracket: stainless steel
Sensor holder: zamak