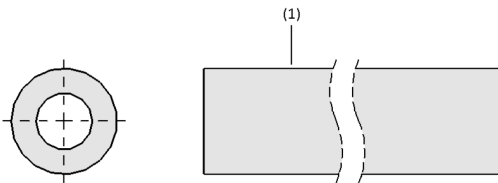


Pipes SXT-RT

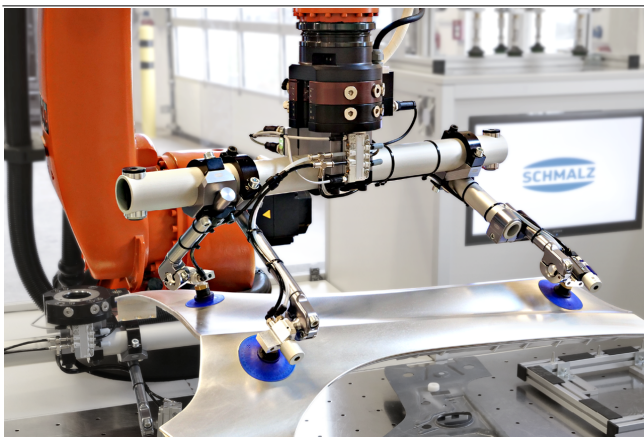
Pipe diameter of 25, 40 and 60 mm



Pipes SXT-RT



System design Pipes SXT-RT



Pipe SXT-RT for assembling a complete tooling for handling formed car body parts

Suitability for industry specific applications

Applications

- Aluminium pipe with large wall thickness for attaching pipe tooling
- For highly dynamic processes with maximum output in the automotive industry in press shops and car body construction
- Can be used in existing plants thanks to simple integration with the appropriate tube clamps

Design

- Aluminium pipe with large wall thickness (1)

Product highlights

- Lightweight aluminum tube optimized for highly dynamic processes with maximum output rate
- Compatible with common tooling systems (tube diameters 25, 40 and 60 mm)
- Compatible with common tooling systems with pipe diameter 25, 40 or 60 mm

Pipes SXT-RT

Pipe diameter of 25, 40 and 60 mm

Designation code Pipes SXT-RT

SXT-RT	–	SL	–	40	–	150...3000
1		2		3		4

1 – Abbreviated designation

Code	Type
SXT-RT	Pipes

2 – Shape

Code	Version
SL	Slot for hose lines

3 – Outside diameter

Code	Diameter in mm
25	ø 25
40	ø 40
60	ø 60

4 – Variable length

Code	Length in mm
150...3000	150 bis 3,000
300...3000	300 bis 3,000
450...3000	450 bis 3,000

The pipes SXT-RT are delivered in the required length.

Ordering data Pipes SXT-RT

Type	Part no.
SXT-RT 25x150...3000 5 AL	10.07.13.00146
SXT-RT 40x150...3000 6 AL	10.07.13.00145
SXT-RT 60x150...4000 5 AL	10.07.13.00147
SXT-RT SL 40x300...3000 6 AL	10.07.13.00148
SXT-RT SL 60x450...4000 5 AL	10.07.13.00149

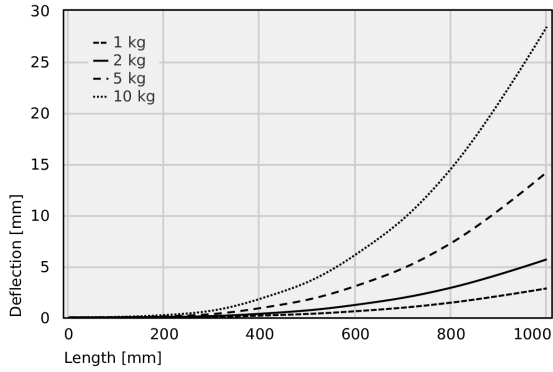
Technical data Pipes SXT-RT

Type	Moment of area Ix [cm ⁴]	Moment of area Iy [cm ⁴]	Weight [kg/m]	Material	Resistance moment Wx [cm ³]	Resistance moment Wy [cm ³]
SXT-RT 25x150...3000 5 AL	2	2	0.9	Aluminum	2	2
SXT-RT 40x150...3000 6 AL	10	10	1.5	Aluminum	5	5
SXT-RT 60x150...4000 5 AL	33	33	2.3	Aluminum	11	11
SXT-RT SL 40x300...3000 6 AL	10	10	1.5	Aluminum	5	5
SXT-RT SL 60x450...4000 5 AL	33	33	2.3	Aluminum	11	11

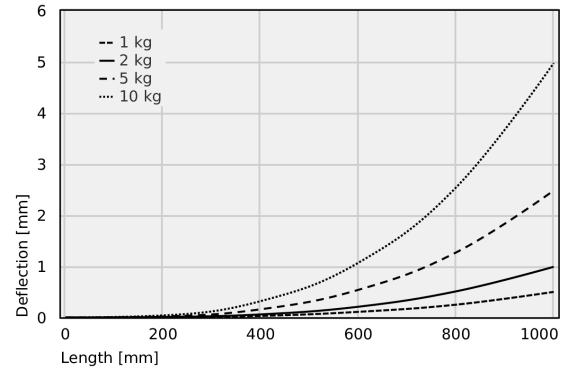
Pipes SXT-RT

Pipe diameter of 25, 40 and 60 mm

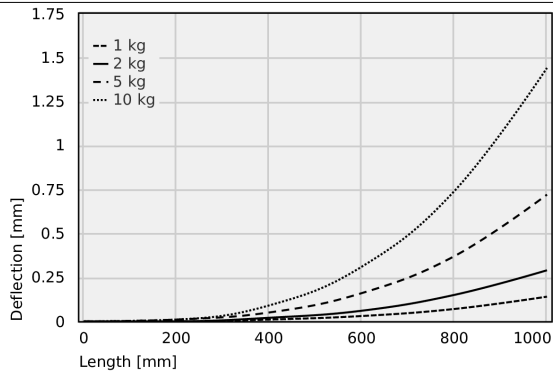
Performance data Pipes SXT-RT



Deflection pipes 25 x 5 mm



Deflection pipes 40 x 6 mm



Deflection pipes 60 x 5 mm

Pipes SXT-RT

Pipe diameter of 25, 40 and 60 mm

Deflection pipes 25 x 5 mm

	0	200	400	600	800	1000
1 kg	0.00	0.02	0.18	0.61	1.45	2.84
2 kg	0.00	0.05	0.36	1.23	2.91	5.68
5 kg	0.00	0.11	0.91	3.07	7.27	14.20
10 kg	0.00	0.23	1.82	6.14	14.55	28.41

Deflection pipes 40 x 6 mm

	0	200	400	600	800	1000
1 kg	0.00	0.00	0.03	0.11	0.25	0.50
2 kg	0.00	0.01	0.06	0.21	0.51	0.99
5 kg	0.00	0.02	0.16	0.54	1.27	2.48
10 kg	0.00	0.04	0.32	1.07	2.54	4.97

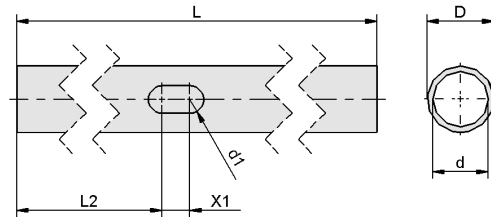
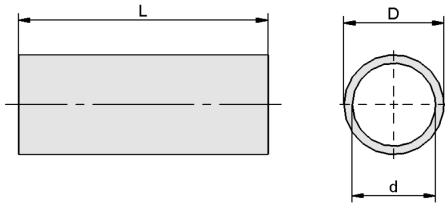
Deflection pipes 60 x 5 mm

	0	200	400	600	800	1000
1 kg	0.00	0.00	0.01	0.03	0.07	0.14
2 kg	0.00	0.00	0.02	0.06	0.15	0.29
5 kg	0.00	0.01	0.05	0.16	0.37	0.72
10 kg	0.00	0.01	0.09	0.31	0.74	1.44

Pipes SXT-RT

Pipe diameter of 25, 40 and 60 mm

Design data Pipes SXT-RT



SXT-RT

SXT-RT SL

Pipes SXT-RT

Pipe diameter of 25, 40 and 60 mm

Design data Pipes SXT-RT

Type	D [mm]	d [mm]	d1 [mm]	L [mm]	L2 [mm]	X1 [mm]
SXT-RT 25x150...3000 5 AL	25	15	-	150.0 ... 3000.0	-	-
SXT-RT 40x150...3000 6 AL	40	28	-	150.0 ... 3000.0	-	-
SXT-RT 60x150...4000 5 AL	60	50	-	150.0 ... 4000.0	-	-
SXT-RT SL 40x300...3000 6 AL	40	28	12	300.0 ... 3000.0	150	25
SXT-RT SL 60x450...4000 5 AL	60	50	25	450.0 ... 4000.0	250	25

Multimedia product presentation

Medium	Link
Product video	https://vimeo.com/408410930