

STAINLESS STEEL ROUND CYLINDER RNDC

ACTUATORS

STAINLESS STEEL ROUND CYLINDER RNDC

Stainless steel clean profile cylinders available in different versions:

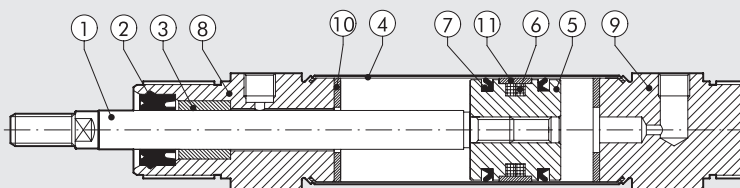
- with or without magnet execution
- double-acting - single or through-rod
- gaskets: Polyurethane or FKM/FPM (for high temperatures)



TECHNICAL DATA		Ø32	Ø40	Ø50	Ø63
Max operating pressure	bar			10	
	MPa			1	
	psi			145	
Temperature range	POLYURETHANE °C			-20 to +80	
	FKM/FPM °C			-10 to +150 (non-magnetic cylinders)	
Design				Chamfered heads	
Fluid				Unlubricated air. Lubrication, if used, must be continuous	
Standard strokes †	mm			0 to 500	
Versions				Double-acting, Double Through-rod	
Sensor magnet				Available magnetic and non-magnetic versions.	
Weights				See cylinder "General technical data" at the beginning of the chapter	
Notes				† Maximum recommended strokes. Higher values can create operating problems	

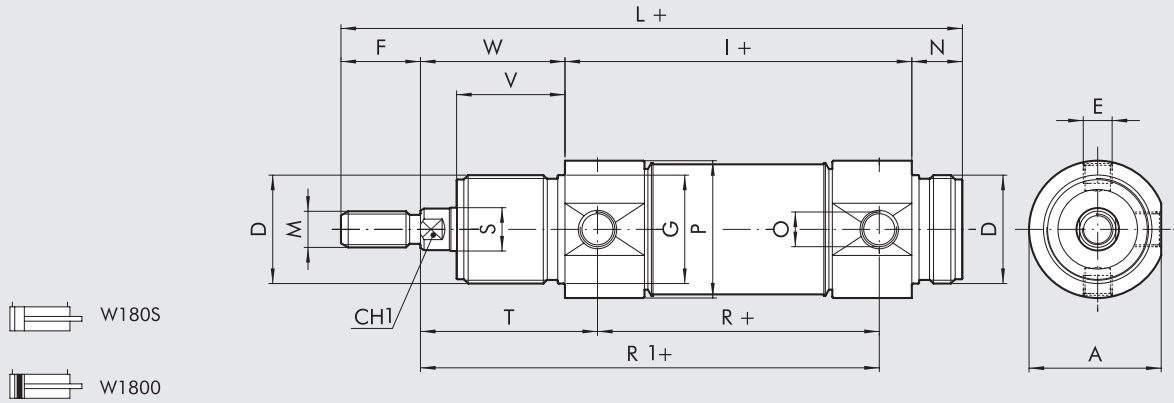
COMPONENTS

- ① PISTON ROD: AISI 316 steel
- ② PISTON ROD GASKET: polyurethane or FKM/FPM
- ③ GUIDE BUSHING: sintered bronze
- ④ BARREL: AISI 304 steel
- ⑤ PISTON: aluminium
- ⑥ MAGNET: plastoferrite
- ⑦ PISTON GASKET: polyurethane or FKM/FPM
- ⑧ ⑨ HEAD: AISI 304 steel
- ⑩ BUFFER: polyurethane
- ⑪ GUIDE RING: PTFE



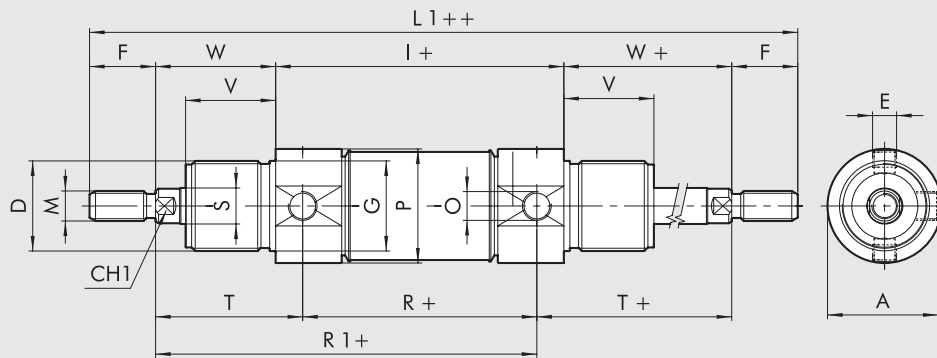
DIMENSIONS OF DOUBLE-ACTING

+ = ADD STROKE



DIMENSIONS DOUBLE-ACTING THROUGH-ROD

+ = ADD STROKE
++ = ADD TWICE THE STROKE



Ø	A	CH1	D	E	F	ØG	I	L	L1	M	N	O	ØP	R	ØS	T	V	W
32	36.5	10	M30x1.5	M8x1	20	30	96	168	212	M10x1.5	14	G1/8	38	78	12	47	30	38
40	44	13	M38x1.5	M10x1	24	38	113	198	251	M12x1.75	16	G1/4	46	89	16	57	35	45
50	55	17	M45x1.5	M12x1.5	32	45	120	220	284	M16x2	18	G1/4	57	96	20	62	38	50
63	67.5	17	M45x1.5	M14x1.5	32	45	124	224	288	M16x2	18	G3/8	70	98	20	63	38	50

KEY TO CODES

W 1 8	0	0	3 2	0 0 3 2
	TYPE	VERSION	DIAMETER	STROKE
Stainless steel cylinder	0 DAM 1 DAM through-rod	0 Standard (magnetic) S Non-magnetic ● V FKM/FPM gasket	32 40 50 63	+ Ø 32 to 63 stroke 0 to 500 mm

DAM: Magnetic double-acting (non-cushioned)
 + Maximum recommended strokes. Higher values can create operating problems
 ● For this version the cylinder will be not magnetic

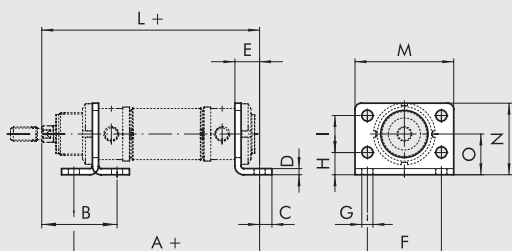
ACCESSORIES FOR STAINLESS STEEL ROUND CYLINDER: FIXINGS

ACTUATORS

ACCESSORIES FOR STAINLESS STEEL ROUND CYLINDER RND C

STAINLESS STEEL LEG MODEL AC

+ = ADD STROKE

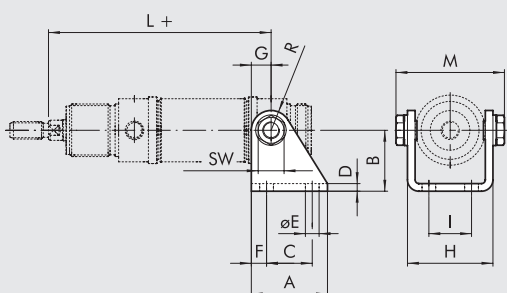


Code	Ø	A	B	C	D	E	F	G	H	I	L	M	N	O
W095X320002	32	124	48	7	4	14	52	7	14	28	148	66	49	28
W095X400002	40	153	60	10	5	20	60	9	18	30	178	80	58	33
W095X500002	50	160	64	10	6	20	70	9	20	40	190	90	70	40
W095X630002	63	164	64	10	6	20	76	9	20	50	194	96	80	45

Note: Individually packed

STAINLESS STEEL COUNTER-HINGE MODEL BC

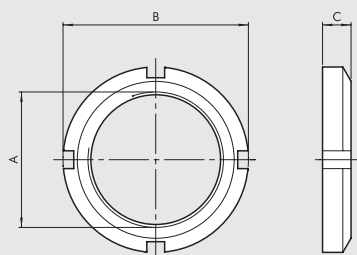
+ = ADD STROKE



Code	Ø	A	B	C	D	E	F	G	H	I	L	M	R
W095X320005	32	40	35	24	4	7	8	12	46.1	20	125	58.1	12
W095X400005	40	50	40	30	5	9	10	13	56.1	28	146	70.1	13
W095X500005	50	54	45	34	6	9	10	14	69.1	36	158	86.1	14
W095X630005	63	65	50	35	6	9	15	16	82.1	42	161	99.1	16

Note: Supplied complete with 2 screws

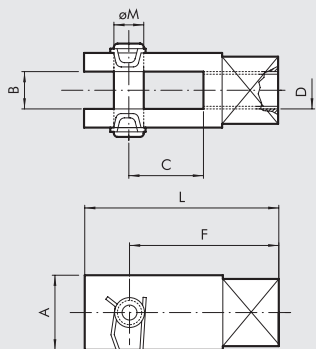
STAINLESS STEEL HEAD RING NUT MODEL G



Code	Ø	A	B	C
W095X320010	32	M30x1.5	45	7
W095X400010	40	M38x1.5	52	8
W095X500010	50	M45x1.5	58	9
W095X630010	63	M45x1.5	58	9

Note: Individually packed

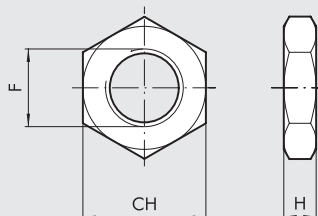
STAINLESS STEEL FORK-MODEL GK-M



Code	Ø	A	B	C	D	F	L	Ø M
W095X320020	32	20	10	20	M10x1.5	40	52	10
W095X400020	40	24	12	24	M12x1.75	48	62	12
W095X500020	50	32	16	32	M16x2	64	83	16
W095X630020	63	32	16	32	M16x2	64	83	16

Note: Individually packed

STAINLESS STEEL NUT FOR PISTON RODS

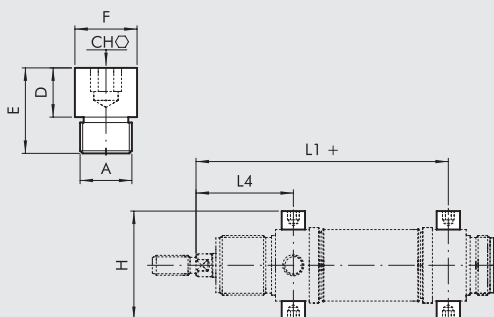


Code	Ø	F	CH	H	Weight [g]
W095X320011	32	M10x1.5	17	6	6
W095X400011	40	M12x1.75	19	7	12
W095X500011	50	M16x2	24	8	20
W095X500011	63	M16x2	24	8	20

Note: Individually packed

STAINLESS STEEL OSCILLATING PIN

+ = ADD STROKE



Code	Ø	A	CH	D	E	øF	H	L1	L4
W095X320007	32	M8X1	5	8	14	10	51	125	47
W095X400007	40	M10X1	6	9.5	16.5	12	61	146	57
W095X500007	50	M12X1.5	6	11	20	14	75	158	62
W095X630007	63	M14X1.5	8	13	26	16	92	161	63

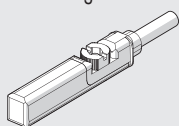
Note: 2- piece pack

ACCESSORIES: MAGNETIC SENSORS

RETRACTABLE SENSOR

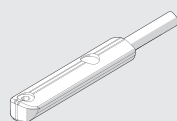
SENSOR, SQUARE TYPE

Latest generation,
secure fixing



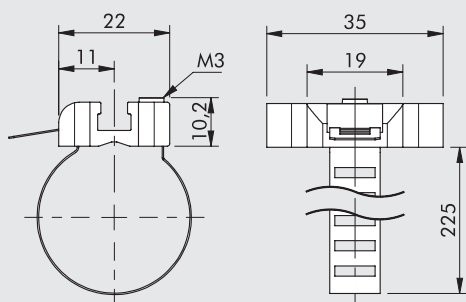
SENSOR, OVAL TYPE

Traditional



For codes and technical data, see **chapter A6**.

SENSOR BRACKET



Code	Bore	Description
W0950001103	32 to 63	Sensor bracket 8 to 63

Note: Individually packed

MATERIAL

Bracket: stainless steel
Sensor holder: zamak