

**DESCRIPTION**

Solenoid valve 2 way normally closed direct acting poppet type, suitable for food applications and all compatible fluids.

**CONSTRUCTION**

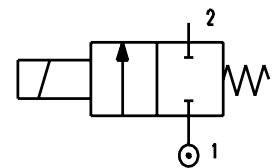
|                  |   |
|------------------|---|
| Body             | Thermoplastic polymer<br>ACS, KTW, W270, WRAS, NSF, FDA certified |
| Armature tube    | Brass chemically nickel plated                                    |
| Plunger and core | AISI 430FR  |
| Springs          | AISI 302  |
| Seal material    | NBR - FPM - EPDM  |



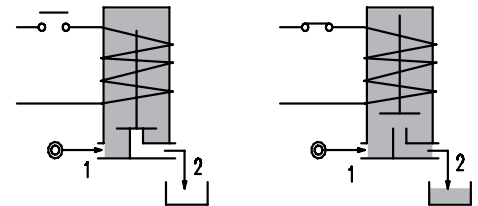
2

**FEATURES**

- Maximum allowable pressure PS 30bar<sup>5</sup>
- Maximum fluid viscosity 25cSt (mm<sup>2</sup>/s)
- Ambient temperature: from -10°C to +80°C according to the coil
- Universal mounting position



- OPTIONS:** Stainless steel armature tube  
Type N connection without nut  
cULus certified coils



| CONNECTION     |  |                                    |  |  |  |
|----------------|--|------------------------------------|--|--|--|
| K              | N  | P                                  | W <sup>④</sup>   | Y  | Z  |
|                |  |                                    |  |  |  |
| <b>SPIGGOT</b> | <b>G1/8" male thread with NUT for flexible pipes</b> | <b>HOSETAIL for flexible pipes</b> | <b>COMPRESSION for flexible and semiflexible pipes</b> | <b>PUSH IN for semiflexible pipes Øext 6</b> | <b>PUSH IN for semiflexible pipes Øext 4</b> |

| CODE<br>① ② ③      | Connection<br>① | Orifice<br>mm | Kv<br>m <sup>3</sup> /h | Differential pressure<br>bar |     |     | Nominal power |               |            | Coil   |       | Seal<br>② | Temp.<br>range ** |
|--------------------|-----------------|---------------|-------------------------|------------------------------|-----|-----|---------------|---------------|------------|--------|-------|-----------|-------------------|
|                    |                 |               |                         | Min                          | Max |     | AC<br>Inrush  | VA<br>Holding | DC<br>Watt | Series | Width |           |                   |
|                    |                 |               |                         |                              | AC  | DC  |               |               |            |        |       |           |                   |
| E135... ..15///... | K-N-P-W-Y-Z     | 1.5           | 0.06                    | 0                            | 16  | 16  | 12            | 8             | 6.5        | 3      | 22    | NBR=B     | -10 +90           |
| E135... ..20///... | K-N-P-W-Y-Z     | 2             | 0.09                    | 0                            | 12  | 10  |               |               |            |        |       |           |                   |
| E135... ..25///... | K-N-P-W-Y-Z     | 2.5           | 0.14                    | 0                            | 8   | 5.5 |               |               |            |        |       |           |                   |
| E135... ..30///... | K-N-P-Y         | 3             | 0.19                    | 0                            | 4.5 | 2   |               |               |            |        |       |           |                   |
| E135... ..40///... | N-P-Y           | 4             | 0.35                    | 0                            | 2.5 | 1.2 | 15            | 11            | 5          | 4      | 30    | EPDM=E    | -10 +140          |
| E135... ..20///... | K-N-P-W-Y-Z     | 2             | 0.09                    | 0                            | 25  | 15  |               |               |            |        |       |           |                   |
| E135... ..25///... | K-N-P-W-Y-Z     | 2.5           | 0.14                    | 0                            | 16  | 8   |               |               |            |        |       |           |                   |
| E135... ..30///... | K-N-P-Y         | 3             | 0.19                    | 0                            | 8   | 4   |               |               |            |        |       |           |                   |
| E135... ..40///... | N-P-Y           | 4             | 0.35                    | 0                            | 5   | 2.5 | 15            | 11            | 5          | 4      | 30    | FPM=V     | -10 +140          |

- ② Seal Example: E135KB20///30B NBR seal SPIGGOT connection
- ③ Coil Example: Coil 24V 50/60Hz
- ④ Only for connection "W" Example: E135W.../1/...

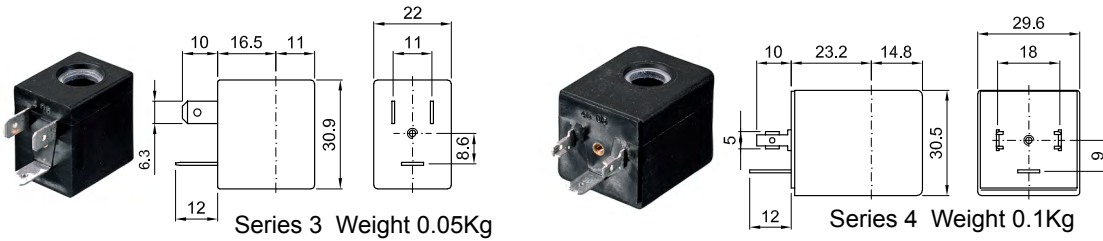
⑤ The maximum allowable pressure PS for steam is 2.5bar (gauge pressure)  
The maximum allowable pressure is related to the type of connection and pipe used

\*\* The temperature range is related to the material of the seals (NBR, EPDM, FPM), and the valves' body.  
Please contact us concerning the temperature range referred to the different types of connection.

| COILS<br>③           | Alternating Current 50/60Hz<br>(V) |     |     |     |            |     |     | Direct Current<br>(V) |     |     | Electrical<br>connection | Connectors              |
|----------------------|------------------------------------|-----|-----|-----|------------|-----|-----|-----------------------|-----|-----|--------------------------|-------------------------|
|                      | 12                                 | 24  | 48  | 110 | 220<br>230 | 240 | 380 | 12                    | 24  | 48  |                          |                         |
| Series 3<br>Width 22 | 30A                                | 30B | 30C | 30D | 30E        | 30F | 30G | 300                   | 301 | 302 | DIN 46244                | PG9<br>code<br>10348000 |
| Series 4<br>Width 30 | 40A                                | 40B | 40C | 40D | 40E        | 40F | 40G | 400                   | 401 | 402 | DIN 43650A               | PG9<br>code<br>10349000 |

**DESCRIPTION**  
 Class F insulation  
 Voltage tolerance  
 AC +15% -10%  
 DC ± 10%  
 Protection class  
 IP65 with connector fitted  
 IP00 without connector  
 Continuous service ED100%

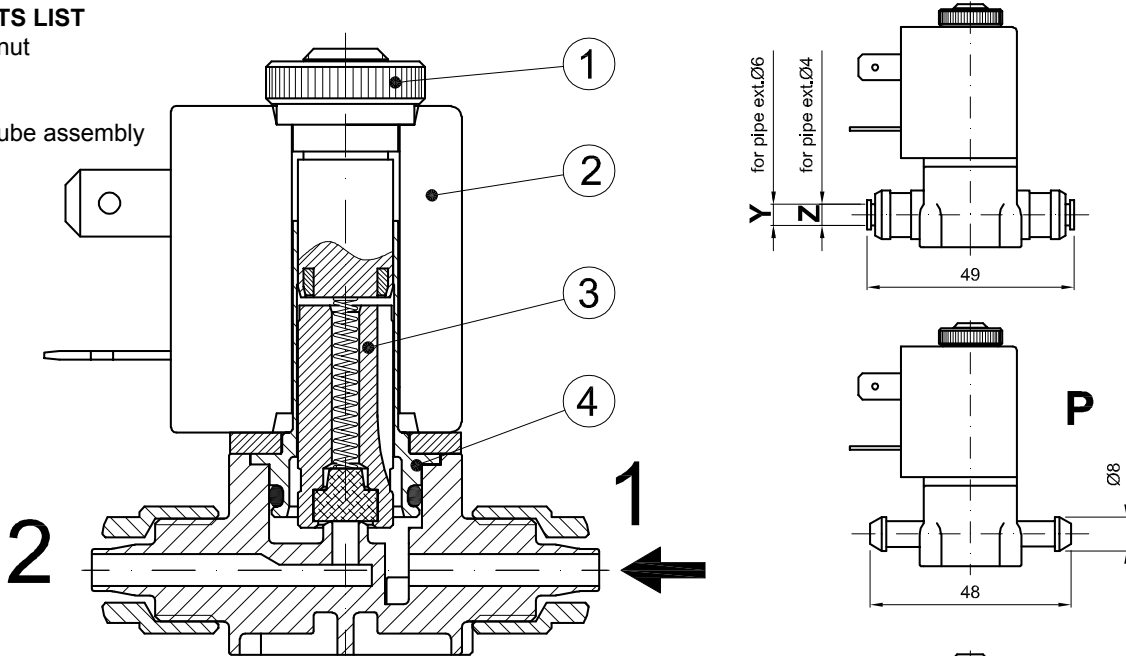
**OPTIONS**  
 Class H insulation  
 Cable attached  
 Special coil voltage  
 Special coil powers  
 CE us certified coils



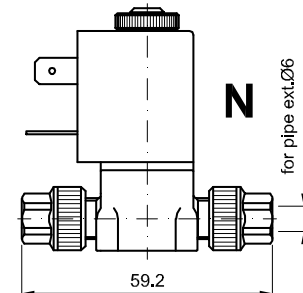
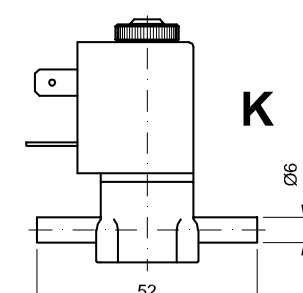
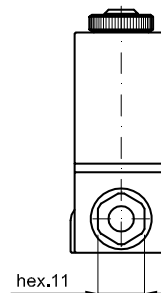
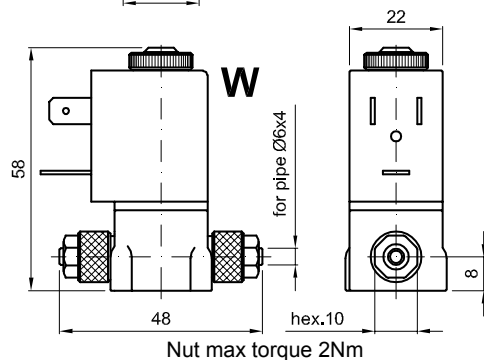
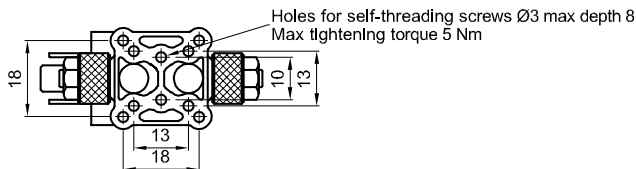
(for coil details see section 8)

### SPARE PARTS LIST

1. Coil fixing nut
2. Coil
3. Plunger
4. Armature tube assembly



Weight with coil series 3=0.10Kg  
 Weight with coil series 4=0.15Kg



Screw the nut with wrench 11 up to the sliding on the hexagon (torque limiting device)