

**DESCRIPTION**

Solenoid valve 2 way normally closed  
direct acting poppet type.

With explosion proof coil certified for hazardous area:

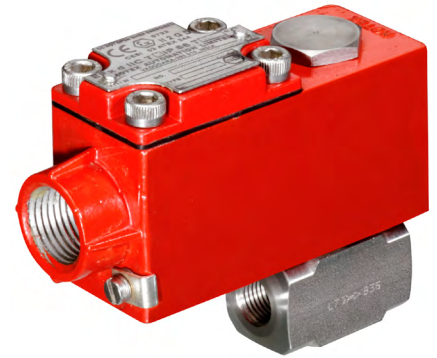
**ATEX II 2GDEx d IIC T6 or T5 or T4 Gb**

**Ex tb IIC T80°C or T95°C or T130°C Db IP66**

**Tamb -40°C ÷ +35°C(T6) or +50°C(T5) or +60°C(T4)**

**CESI 03 ATEX 344 Extension No. 01/12**

(other certifications e.g.EAC, INMETRO, CCOE etc. on request)



Alloy housing  
(coil A6)



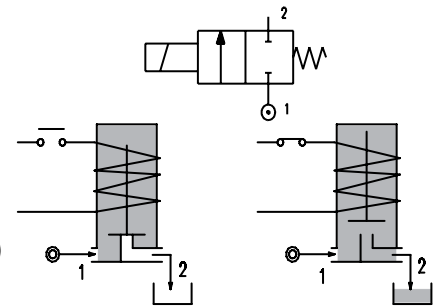
S.Steel housing  
(coil X6)

**VALVE CONSTRUCTION**

Body	AISI 303
Springs	AISI 302
Seal material	NBR - FPM - EPDM

**EXPLOSION PROOF COIL CONSTRUCTION**

Housing	Red colour alloy (coil A6) Stainless steel (coil X6)
Electrical connection	1/2" NPT (M20x1.5 on request)



**FEATURES**

Maximum allowable pressure PS 100bar

Maximum fluid viscosity 25cSt (mm<sup>2</sup>/s)

Ambient temperature: -10°C ÷ +35°C(T6), +50°C(T5), +60°C(T4)

Mounting position with vertical coil above

**NOTE:** The solenoid valve is suitable only with media that are **NOT** potentially explosive

CODE ① ② ③	Connection G ISO 228	Orifice mm	Kv m <sup>3</sup> /h	Differential pressure bar			Nominal power		Coil Series	Seal	Temp. range °C	
				Min	Max AC DC		AC Holding	DC				
A110... ..10/1/...	1/4"	1	0.04	0	80	80	12 VA	8W	A6	NBR=B	-10 +80	
A110... ..12/1/...		1.2	0.05	0	60	60						
A110... ..15/1/...		1.5	0.07	0	30	26						
A110... ..20/1/...		2	0.1	0	22	20						
A110... ..25/1/...		2.5	0.15	0	16	14						
A110... ..30/1/...		3/8"	3	0.25	0	15						10
A110... ..35/1/...		1/2"	3.5	0.32	0	10						8
A110... ..40/1/...			4	0.36	0	8						5
A110... ..45/1/...			4.5	0.41	0	6.5						3.5
A110... ..52/1/...			5.2	0.47	0	4						1.8
A110... ..64/1/...		6.4	0.64	0	3.5	1						

① Connection: B=1/4", C=3/8", D=1/2"

② Seal

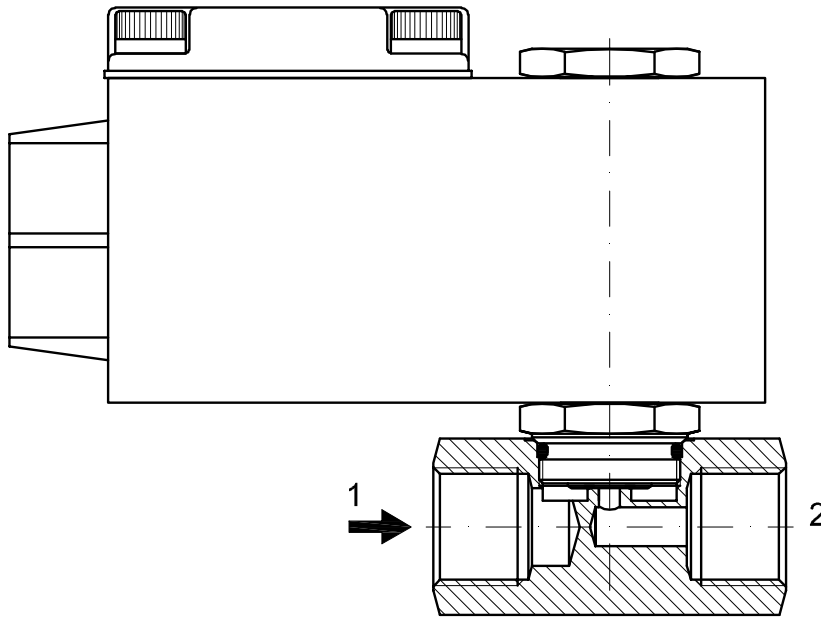
③ Coil

Example: A110BV12/1/A6B - connections G1/4", FPM seal, 24V AC, alloy housing

A110BV12/1/X6B - connections G1/4", FPM seal, 24V AC, stainless steel housing

COILS ③	Alternating Current 50/60Hz (V)				Direct Current (V)			Electrical connection
	24	48	110	220 230	12	24	48	
Series A6 alloy housing	A6B	A6C	A6D	A6E	A60	A61	A62	1/2" NPT
Series X6 s. steel housing	X6B	X6C	X6D	X6E	X60	X61	X62	

**DESCRIPTION**  
 Voltage tolerance  
 AC +15% -10%  
 DC ± 10%  
 Protection class IP66  
 Continuous service ED100%



### OVERALL DIMENSION

