

**DESCRIPTION**

Solenoid valve 2 way normally closed in stainless steel AISI 316 direct acting poppet type.

With explosion proof coil certified for hazardous area:

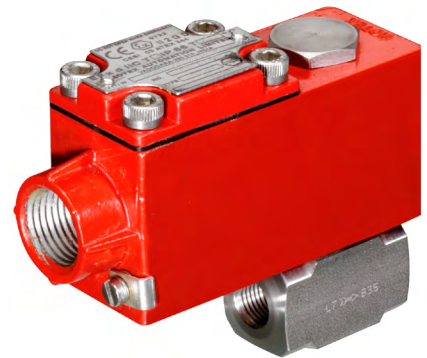
**ATEX II 2GDEx d IIC T6 or T5 or T4 Gb**

**Ex tb IIC T80°C or T95°C or T130°C Db IP66**

**Tamb -40°C ÷ +35°C(T6) or +50°C(T5) or +60°C(T4)**

**CESI 03 ATEX 344 Extension No. 01/12**

(other certifications e.g.EAC, INMETRO, CCOE etc. on request)



**2**

**VALVE CONSTRUCTION**

Body	AISI 316
Armature tube	AISI 316
Plunger and core	AISI 430FR
Shading ring	Silver
Springs	AISI 316
Seal	NBR - FPM - EPDM



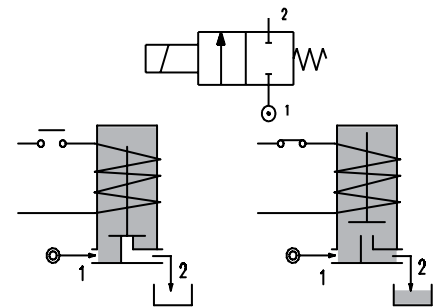
Alloy housing (series A6)



S.Steel housing (series X6)

**EXPLOSION PROOF COIL CONSTRUCTION**

Housing	Red colour alloy (coil A6) Stainless steel (coil X6)
Electrical connection	1/2" NPT (M20x1.5 on request)



**FEATURES**

- Maximum allowable pressure PS 100bar
- Maximum fluid viscosity 25cSt (mm<sup>2</sup>/s)
- Ambient temperature: -40°C ÷ +35°C(T6), +50°C(T5), +60°C(T4)
- Mounting position with vertical coil above

**NOTE:** The solenoid valve is suitable only with media that are **NOT** potentially explosive

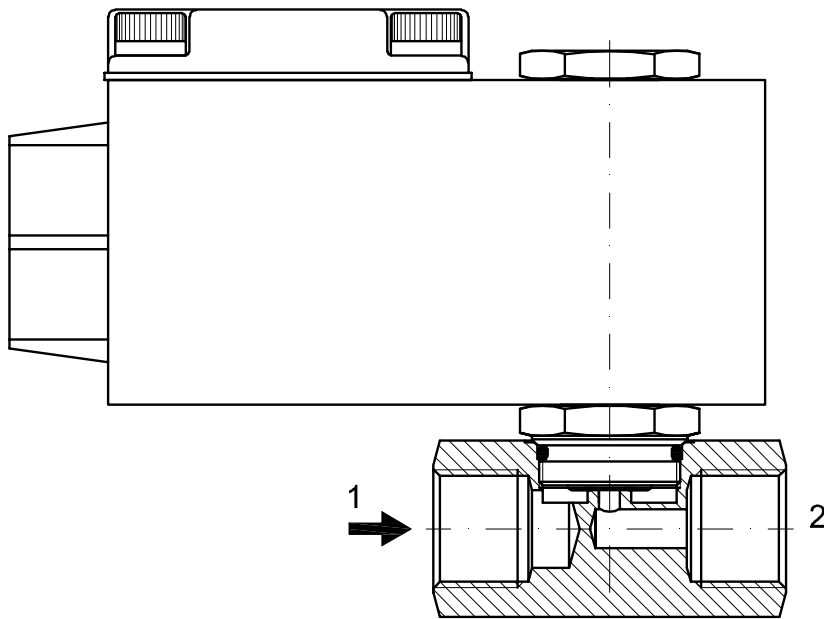
CODE ① ② ③	Connection G ISO 228	Orifice mm	Kv m <sup>3</sup> /h	Differential pressure bar			Nominal power		Coil Series	Seal	Temp. range °C	
				Min	Max AC DC		AC Holding	DC				
A170... ..10///...	1/4"	1	0.04	0	80	80	12 VA	8W	A6 or X6	NBR=B EPDM=E FPM=V	-10 +80	
A170... ..12///...		1.2	0.05	0	60	60						
A170... ..15///...		1.5	0.07	0	30	26						
A170... ..20///...		2	0.1	0	22	20						
A170... ..25///...		3/8"	2.5	0.15	0	16						14
A170... ..30///...		1/2"	3	0.25	0	15						10
A170... ..35///...			3.5	0.32	0	10						8
A170... ..40///...			4	0.36	0	8						5
A170... ..45///...	4.5		0.41	0	6.5	3.5						

- ① Connection: B=1/4", C=3/8", D=1/2"
- ② Seal
- ③ Coil

Example: A170BV12///A6B - connections G1/4", FPM seal, 24V AC, alloy housing  
 A170BV12///X6B - connections G1/4", FPM seal, 24V AC, stainless steel housing

COILS ②	Alternating Current 50/60Hz (V)				Direct Current (V)			Electrical connection
	24	48	110	220 230	12	24	48	
Series A6 alloy housing	A6B	A6C	A6D	A6E	A60	A61	A62	1/2" NPT
Series X6 s. steel housing	X6B	X6C	X6D	X6E	X60	X61	X62	

**DESCRIPTION**  
 Voltage tolerance  
 AC +15% -10%  
 DC ± 10%  
 Protection class IP66  
 Continuous service ED100%



### OVERALL DIMENSION

