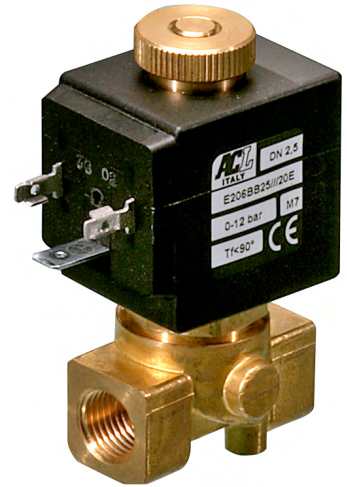


DESCRIPTION

Solenoid valve 2 way normally open
direct acting poppet type

CONSTRUCTION

Body	Brass
Armature tube	Brass
Plunger and core	AISI 430FR
Springs	AISI 302
Seal material	NBR - FPM - EPDM

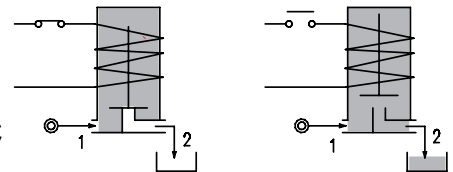
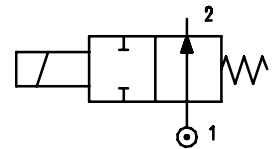


2

FEATURES

- Maximum allowable pressure PS 50bar^⑤
- Maximum fluid viscosity 25cSt (mm²/s)
- Ambient temperature: from -10°C to +80°C according to the coil
- Universal mounting position

- OPTIONS:** Stainless steel armature tube
Electroless nickel plating
c us certified coils



ON REQUEST: Versions for use with fluid temperature at -40°C
Manual override

CODE ① ② ③	Connection G ISO 228	Orifice mm	Kv m ³ /h	Pressure range bar			Nominal power			Coil		Seal ②	Temp. range °C	
				Min	Max		AC Inrush	VA Holding	DC Watt	Series	Width			
					AC	DC								
E206... ..15///...	1/8"	1.5	0.07	0	23	20	15	-	2	30	NBR=B	-10 +90		
E206... ..20///...		2	0.1	0	17									
E206... ..25///...		2.5	0.15	0	12									
E206... ..30///...		3	0.25	0	9									
E206... ..35///...		1/4"	3.5	0.32	0								7	
E206... ..40///...			4	0.36	0								5.5	
E206... ..45///...			4.5	0.41	0								4.5	
E206... ..52///...			5.2	0.47	0								3	
D206... ..15/3/...	1/8"	1.5	0.07	0	-	-	-	10	2	30	EPDM=E	-10 +140		
D206... ..20/3/...		2	0.1	0	-								11	
D206... ..25/3/...		2.5	0.15	0	-								7	
D206... ..30/3/...		3	0.25	0	-								6.5	
D206... ..35/3/...		1/4"	3.5	0.32	0								-	4
D206... ..40/3/...			4	0.36	0								-	3.5
D206... ..45/3/...			4.5	0.41	0								-	3
D206... ..52/3/...			5.2	0.47	0								-	2.2
E206... ..15///...	1/8"	1.5	0.07	0	23	40	30	27	5	36	FPM=V	-10 +140		
E206... ..20///...		2	0.1	0	17								17	
E206... ..25///...		2.5	0.15	0	12								12	
E206... ..30///...		3	0.25	0	9								9	
E206... ..35///...		1/4"	3.5	0.32	0								7	7
E206... ..40///...			4	0.36	0								5.5	5.5
E206... ..45///...			4.5	0.41	0								4.5	4.5
E206... ..52///...			5.2	0.47	0								3	3
E206... ..64///...		6.4	0.64	0	3.5	3.5								

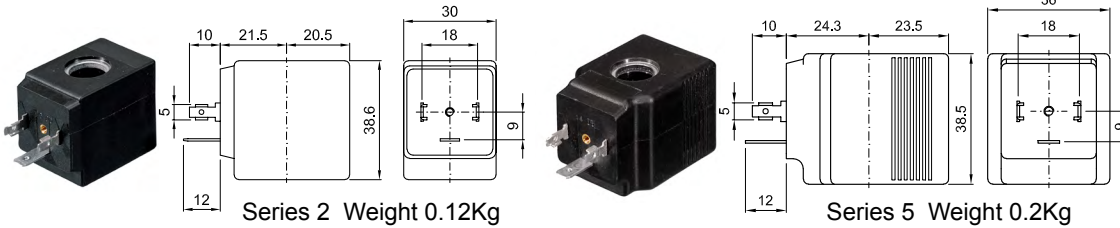
- ① Connection: A=1/8" , B=1/4"
- ② Seal Example: E206BB35///20E 1/4"connections, NBR seals
- ③ Coil Coil 230V 50/60Hz
- ④ The maximum allowable pressure PS for steam is 2.5bar (gauge pressure)

COILS ③	Alternating Current 50/60Hz (V)							Direct Current (V)			Electrical connection	Connectors
	12	24	48	110	220 230	240	380	12	24	48		
Series 2 Width 30	20A	20B	20C	20D	20E	20F	20G	200	201	202	DIN 43650A	PG9 code 10349000
Series 5 Width 36	52A	52B	52C	52D	52E	52F	52G	520	521	522	DIN 43650A	PG11 code 10349001

DESCRIPTION
 Insulation class
 Series 2 =F Series 5=H
 Voltage tolerance
 AC +15% -10%
 DC ± 10%
 Protection class
 IP65 with connector fitted
 IP00 without connector

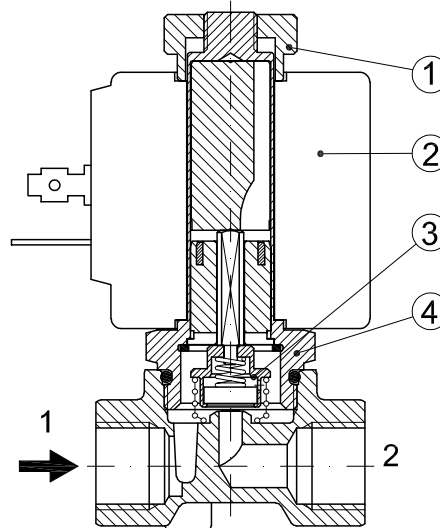
OPTIONS
 Class H insulation (series 2)
 Cable attached
 Special coil voltage
 Special coil powers
 c US certified coils

(for coil details see section 8)

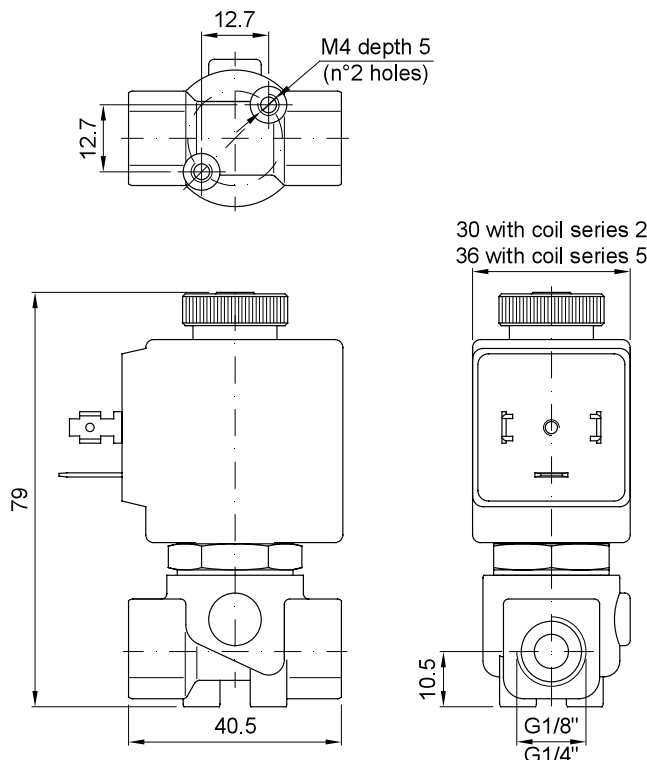


SPARE PARTS LIST

1. Coil fixing nut
2. Coil
3. Seal assembly
4. Armature tube assembly



OVERALL DIMENSION



Weight with coil series 2=0.30Kg
 Weight with coil series 5=0.38Kg