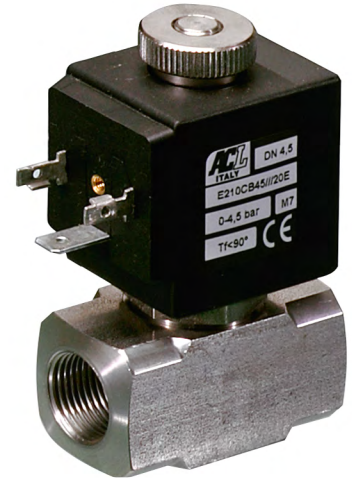


DESCRIPTION

Solenoid valve 2 way normally open
direct acting poppet type

CONSTRUCTION

Body	AISI 303
Armature tube	AISI 303
Plunger and core	AISI 430FR
Springs	AISI 302
Seal material	NBR - FPM - EPDM

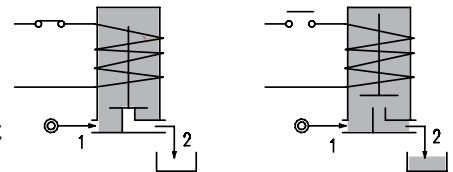
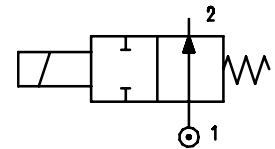


FEATURES

Maximum allowable pressure PS 50bar^③
 Maximum fluid viscosity 25cSt (mm²/s)
 Ambient temperature: from -10°C to +80°C according to the coil
 Universal mounting position

OPTIONS: Silver shading ring
 Versions for use with industrial oxygen
 c US certified coils

ON REQUEST: Versions for use with fluid temperature at -40°C
 Manual override



CODE ① ② ③	Connection G ISO 228	Orifice mm	Kv m ³ /h	Pressure range bar			Nominal power			Coil		Seal ②	Temp. range °C			
				Min	Max		AC Inrush	VA Holding	DC Watt	Series	Width					
					AC	DC										
E210... ..15///...	1/4"	1.5	0.07	0	23	20	15	-	2	30	NBR=B	-10 +90				
E210... ..20///...		2	0.1	0	17											
E210... ..25///...		2.5	0.15	0	12											
E210... ..30///...		3	0.25	0	9											
E210... ..35///...		3/8"	3.5	0.32	0								7			
E210... ..40///...		1/2"	4	0.36	0								5.5			
E210... ..45///...			4.5	0.41	0								4.5			
E210... ..52///...		5.2	0.47	0	3											
D210... ..15///...	1/4"	1.5	0.07	0	-	-	-	10	2	30			EPDM=E	-10 +140		
D210... ..20///...		2	0.1	0	-										18	
D210... ..25///...		2.5	0.15	0	-										11	
D210... ..30/3/...		3	0.25	0	-										7	
D210... ..35/3/...		3/8"	3.5	0.32	0										-	6.5
D210... ..40/3/...		1/2"	4	0.36	0										-	4
D210... ..45/3/...			4.5	0.41	0										-	3.5
D210... ..52/3/...		5.2	0.47	0	-										3	
E210... ..15///...	1/4"	1.5	0.07	0	23	40	30	27	5	36	FPM=V	-10 +140				
E210... ..20///...		2	0.1	0	17											
E210... ..25///...		2.5	0.15	0	12											
E210... ..30///...		3	0.25	0	9											
E210... ..35///...		3/8"	3.5	0.32	0										7	
E210... ..40///...		1/2"	4	0.36	0										5.5	
E210... ..45///...			4.5	0.41	0										4.5	
E210... ..52///...		5.2	0.47	0	3											
E210... ..64///...	6.4	0.64	0	3.5												

① Connection: B=1/4" , C=3/8" , D=1/2"

② Seal

③ Coil

④ The maximum allowable pressure PS for steam is 2.5bar (gauge pressure)

Example: E210BB25///20B 1/4" connection, NBR seal
 Coil 24V 50/60Hz

COILS ③	Alternating Current 50/60Hz (V)							Direct Current (V)			Electrical connection	Connectors
	12	24	48	110	220 230	240	380	12	24	48		
Series 2 Width 30	20A	20B	20C	20D	20E	20F	20G	200	201	202	DIN 43650A	PG9 code 10349000
Series 5 Width 36	52A	52B	52C	52D	52E	52F	52G	520	521	522	DIN 43650A	PG11 code 10349001

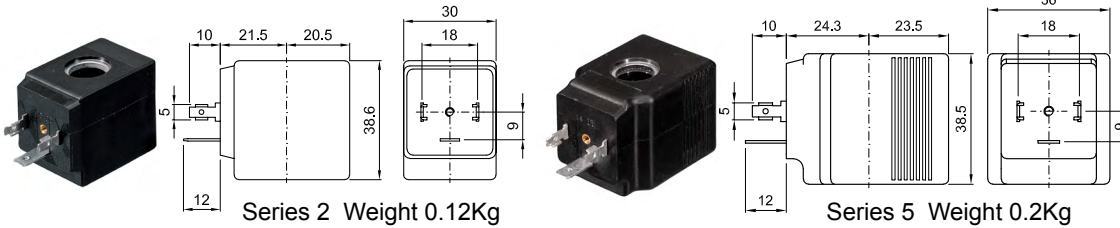
DESCRIPTION

Insulation class
Series 2 =F Series 5=H
Voltage tolerance
AC +15% -10%
DC ± 10%
Protection class
IP65 with connector fitted
IP00 without connector

OPTIONS

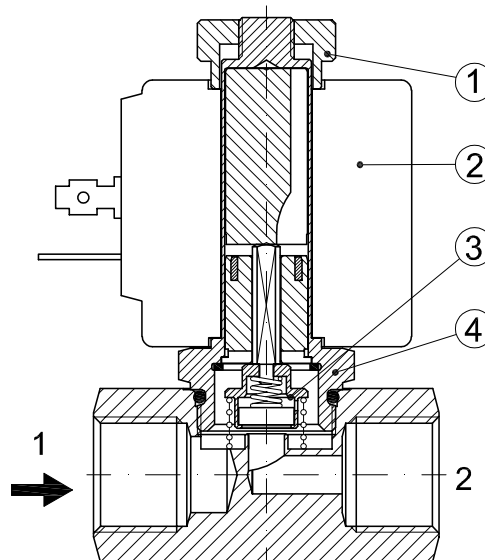
Class H insulation (series 2)
Cable attached
Special coil voltage
Special coil powers
c US certified coils

(for coil details see section 8)

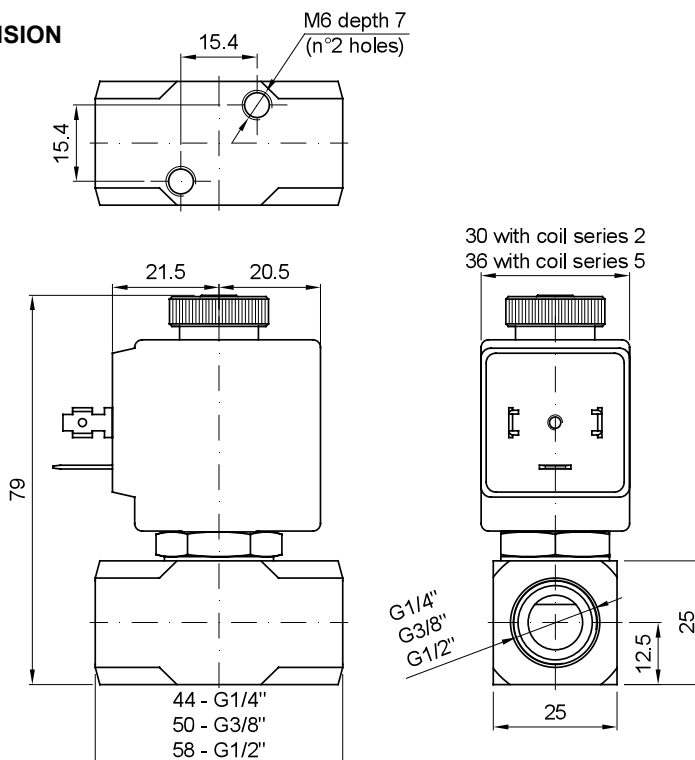


SPARE PARTS LIST

1. Coil fixing nut
2. Coil
3. Seal assembly
4. Armature tube assembly



OVERALL DIMENSION



Weight with coil series 2=0.30Kg
Weight with coil series 5=0.38Kg