

DESCRIPTION

Solenoid valve 2 way normally open direct acting poppet type in stainless steel AISI 303.

With explosion proof coil certified for hazardous area:

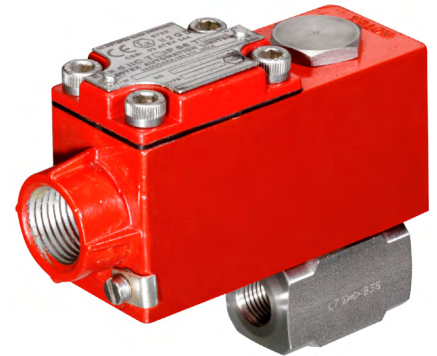
ATEX II 2GDEx d IIC T6 or T5 or T4 Gb

Ex tb IIC T80°C or T95°C or T130°C Db IP66

Tamb -40°C ÷ +35°C(T6) or +50°C(T5) or +60°C(T4)

CESI 03 ATEX 344 Extension No. 01/12

(other certifications e.g.EAC, INMETRO, CCOE etc. on request)

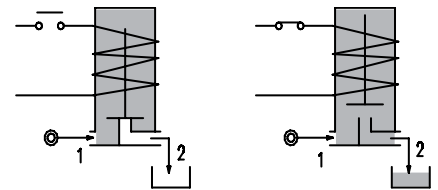
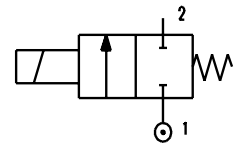


VALVE CONSTRUCTION

Body	AISI 303
Seal assembly	AISI 303
Core and plunger	AISI 430FR
Springs	AISI 302
Armature tube	AISI 316
Seal material	NBR - FPM - EPDM

EXPLOSION PROOF COIL CONSTRUCTION

Housing	Red colour alloy (coil A6) Stainless steel AISI 316 (coil X6)
Electrical connection	1/2" NPT (M20x1.5 on request)



FEATURES

- Maximum allowable pressure PS 100bar
- Maximum fluid viscosity 25cSt (mm²/s)
- Ambient temperature: -40°C ÷ +35°C(T6), +50°C(T5), +60°C(T4)
- Mounting position with vertical coil above

NOTE: The solenoid valve is suitable only with media that are **NOT** potentially explosive

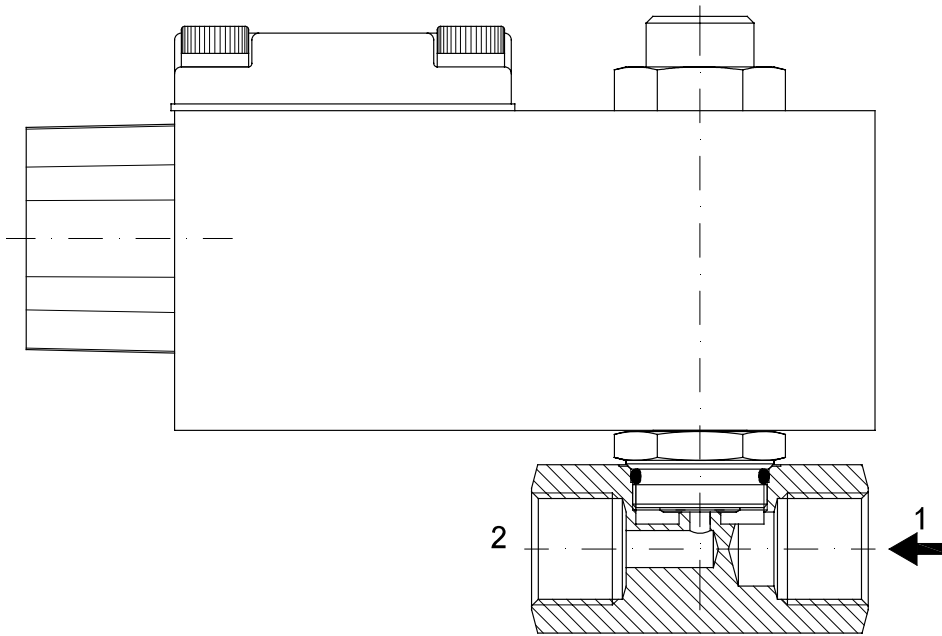
CODE ① ② ③	Connection G ISO 228	Orifice mm	Kv m ³ /h	Differential pressure bar			Nominal power		Coil Series	Seal	Temp. range °C
				Min	Max		AC Holding	DC			
					AC	DC					
A210... ..15///...	1/4" 3/8" 1/2"	1.5	0.07	0	23	23	12 VA	8W	A6 or X6	NBR=B EPDM=E FPM=V	-10 +80
A210... ..20///...		2	0.1	0	17	17					
A210... ..25///...		2.5	0.15	0	12	12					
A210... ..30///...		3	0.25	0	9	9					
A210... ..35///...		3.5	0.32	0	7	7					
A210... ..40///...		4	0.36	0	5.5	5.5					
A210... ..45///...		4.5	0.41	0	4.5	4.5					
A210... ..52///...		5.2	0.47	0	3	3					

- ① Connection: B=1/4", C=3/8", D=1/2"
- ② Seal
- ③ Coil

Example: A210BV15///A6B - connections G1/4", FPM seal, orifice Ø1.5mm, 24V AC, alloy housing
 A210BV15///X60 - connections G1/4", FPM seal, orifice Ø1.5mm, 12V DC, stainless steel housing

COILS ③	Alternating Current 50/60Hz (V)				Direct Current (V)			Electrical connection
	24	48	110	220 230	12	24	48	
Series A6 alloy housing	A6B	A6C	A6D	A6E	A60	A61	A62	1/2" NPT
Series X6 s. steel housing	X6B	X6C	X6D	X6E	X60	X61	X62	

DESCRIPTION
 Voltage tolerance
 AC +15% -10%
 DC ± 10%
 Protection class IP66
 Continuous service ED100%



OVERALL DIMENSION

The data in brackets refer to the X6 series coil ...

