

**DESCRIPTION**

Solenoid valve 2 way normally open direct acting poppet type in stainless steel AISI 316.

With explosion proof coil certified for hazardous area:

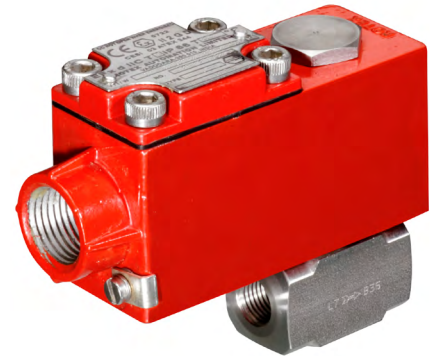
**ATEX II 2GDEx d IIC T6 or T5 or T4 Gb**

**Ex tb IIC T80°C or T95°C or T130°C Db IP66**

**Tamb -40°C ÷ +35°C(T6) or +50°C(T5) or +60°C(T4)**

**CESI 03 ATEX 344 Extension No. 01/12**

(other certifications e.g.EAC, INMETRO, CCOE etc. on request)

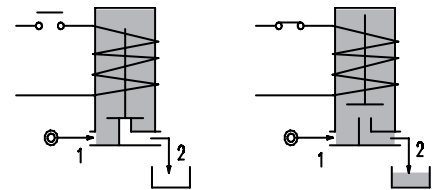
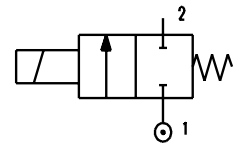


**VALVE CONSTRUCTION**

Body	AISI 316
Seal assembly	AISI 316
Core and plunger	AISI 430FR
Springs	AISI 316
Armature tube	AISI 316
Seal material	NBR - FPM - EPDM

**EXPLOSION PROOF COIL CONSTRUCTION**

Housing	Red colour alloy (coil A6) Stainless steel AISI 316 (coil X6)
Electrical connection	1/2" NPT (M20x1.5 on request)



**FEATURES**

- Maximum allowable pressure PS 100bar
- Maximum fluid viscosity 25cSt (mm<sup>2</sup>/s)
- Ambient temperature: -40°C ÷ +35°C(T6), +50°C(T5), +60°C(T4)
- Mounting position with vertical coil above

**NOTE:** The solenoid valve is suitable only with media that are **NOT** potentially explosive

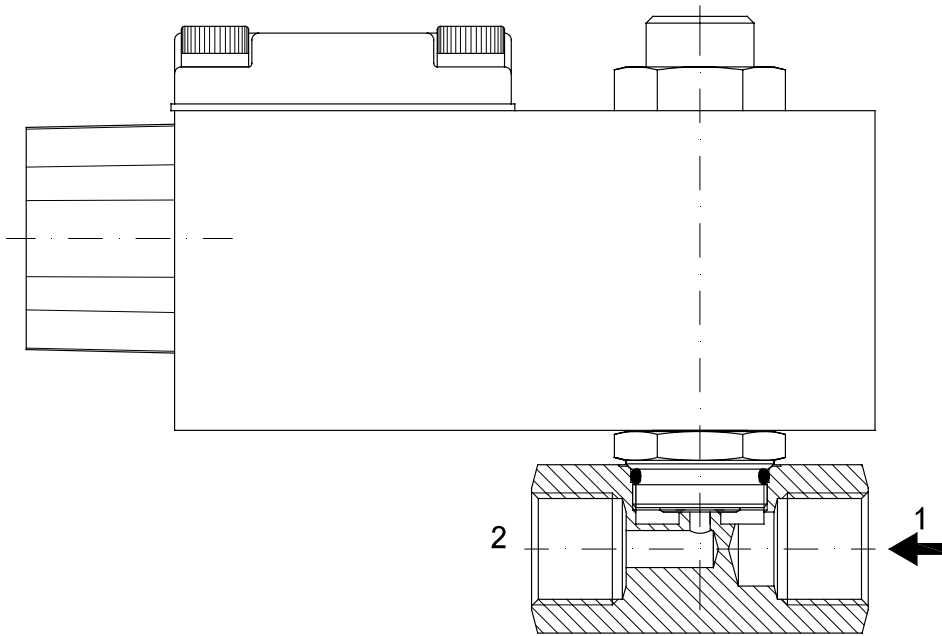
CODE ① ② ③	Connection G ISO 228	Orifice mm	Kv m <sup>3</sup> /h	Differential pressure bar			Nominal power		Coil Series	Seal	Temp. range °C
				Min	Max		AC Holding	DC			
					AC	DC					
A270... ..15///...	1/4"	1.5	0.07	0	23	23	12 VA	8W	A6 or X6	NBR=B EPDM=E FPM=V	-10 +80
A270... ..20///...		2	0.1	0	17	17					
A270... ..25///...		2.5	0.15	0	12	12					
A270... ..30///...	3/8"	3	0.25	0	9	9					
A270... ..35///...	1/2"	3.5	0.32	0	7	7					
A270... ..40///...		4	0.36	0	5.5	5.5					
A270... ..45///...		4.5	0.41	0	4.5	4.5					

- ① Connection: B=1/4", C=3/8", D=1/2"
- ② Seal
- ③ Coil

Example: A270CV25///A6B - connections G3/8", FPM seal, orifice Ø2.5mm, 24V AC, alloy housing  
 A270BV25///X61 - connections G1/4", FPM seal, orifice Ø2.5mm, 24V DC, stainless steel housing

COILS ③	Alternating Current 50/60Hz (V)				Direct Current (V)			Electrical connection
	24	48	110	220 230	12	24	48	
Series A6 alloy housing	A6B	A6C	A6D	A6E	A60	A61	A62	1/2" NPT
Series X6 s.steel housing	X6B	X6C	X6D	X6E	X60	X61	X62	

**DESCRIPTION**  
 Voltage tolerance  
 AC +15% -10%  
 DC ± 10%  
 Protection class IP66  
 Continuous service ED100%



### OVERALL DIMENSION

The data in brackets refer to the X6 series coil ...

