

DESCRIPTION

Solenoid valve 3 way normally closed
direct acting poppet type for modular construction

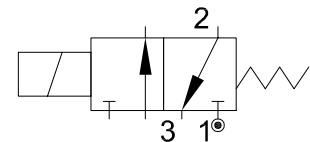
CONSTRUCTION

Body	Die-cast aluminium
Armature tube	Brass
Plunger and core	AISI 430FR
Springs	AISI 302
Seal material	NBR - FPM - EPDM

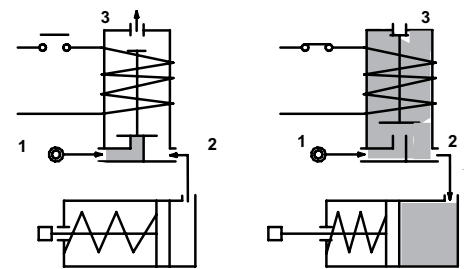


FEATURES

Media: Air, neutral gases
Ambient temperature: from -10°C to +80°C according to the coil
Universal mounting position



- OPTIONS:**
- Manual override
 - Stainless steel armature tube
 - Electroless nickel plating
 - Series 7 explosion proof coil according to ATEX - EExmII
 - Wet proof coil fixing nut



NOTE: This isn't a standard valve. Please contact the manufacturer for any question.

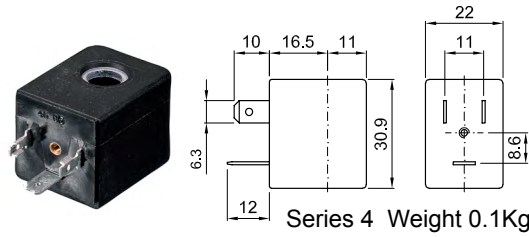
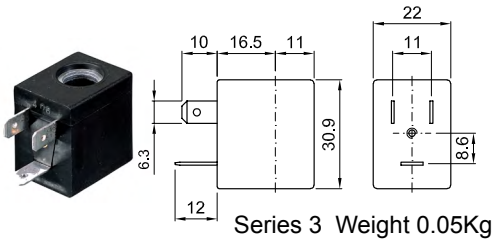
CODE ① ②	Connection G ISO 228	Orifice mm		Kv m³/h	Differential pressure bar			Nominal power			Coil		Seal ①	Temp. range °C
		1→2	2→3		Min	Max AC DC		AC Inrush	VA Holding	DC Watt	Series	Width		
E350B...15///...	G1/4"	1.5	1.5	0.06	0	10	10	12	8	6.5	3	22	NBR=B	-10 +90
E350B...17///...		1.7	1.7	0.08	0	8	8				4	30		
E350M...15///...		M12x1.5	1.5	1.5	0.06	0	10				10	3	22	
E350M...17///...	1.7		1.7	0.08	0	8	8	4	30					
E350M...17///...			1.7	1.7	0.08	0	10	10						

① Seal Example: E350MV17///30B FPM seal M12x1.5 connection
 ② Coil

COILS ②	Alternating Current 50/60Hz Volt							Direct Current Volt			Electrical connection	Connectors
	12	24	48	110	220 230	240	380	12	24	48		
Series 3 Width 22	30A	30B	30C	30D	30E	30F	30G	300	301	302	DIN 46244	PG9 code 10348000
Series 4 Width 30	40A	40B	40C	40D	40E	40F	40G	400	401	402	DIN 43650A	PG9 code 10349000

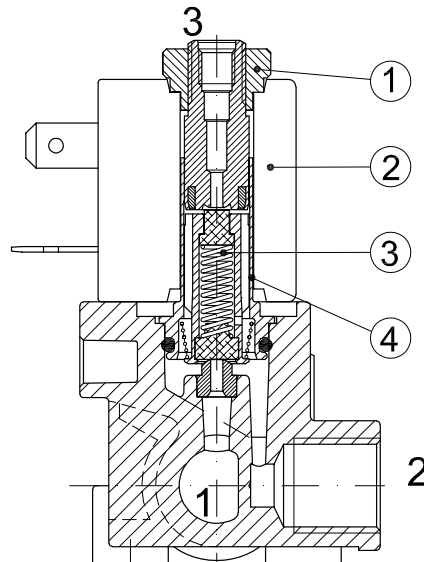
DESCRIPTION
 Class F insulation
 Voltage tolerance
 AC +15% -10%
 DC ± 10%
 Protection class
 IP65 with connector fitted
 IP00 without connector
 Continuous service ED100%

OPTIONS
 Class H insulation
 Cable attached
 Special coil voltage
 Special coil powers

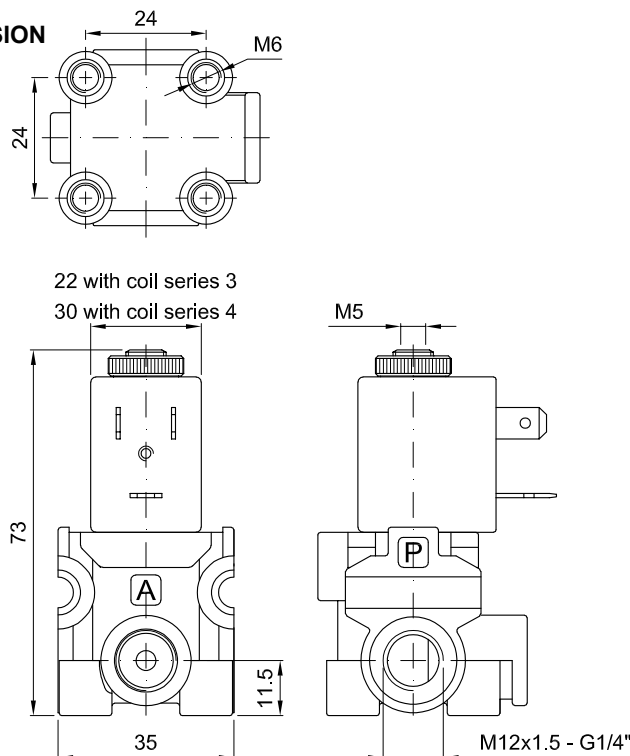


SPARE PARTS LIST

1. Coil fixing nut
2. Coil
3. Plunger
4. Armature tube with core



OVERALL DIMENSION



Weight with coil series 3=0.14Kg
 Weight with coil series 4=0.19Kg