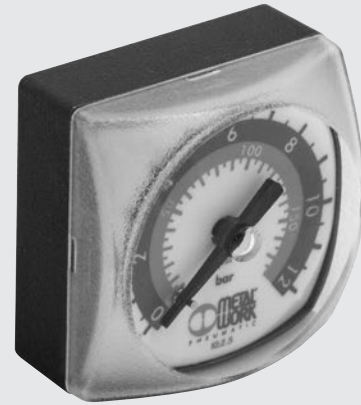


# SQUARE DIAL PRESSURE GAUGE



A compact pressure gauge with a square dial to go with air treatment units.

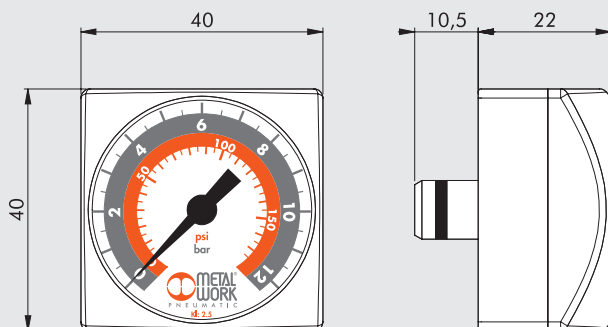
A PTFE ring seal mounted on the 1/8" thread of the fitting ensures a perfect pneumatic seal. To mount it, screw the gauge in as far as it will go, then loosen enough to align the dial. A sealant is not required. The pressure gauge has a neck to dampen pressure vibration and absorb water hammer. This improves overall reliability and guarantees longer life.



## TECHNICAL DATA

Fitting thread		G 1/8"
Pressure range	bar	0-4 / 0-12
	psi	0-60 / 0-175
Precision class	EN 837	2.5
Pneumatic seal		PTFE ring seal
Vibration damping		Yes

## DIMENSIONS



## ORDERING CODES

Code	Description
9700109	M 40x40 1/8 04
9700110	M 40x40 1/8 012