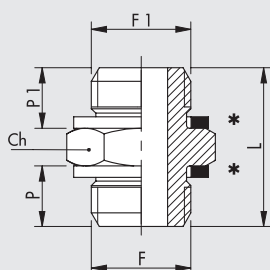


STANDARD FITTINGS SERIES A

- Body: OT58 brass
- Maximum pressure 870 psi, 6000 KPa 60 bar



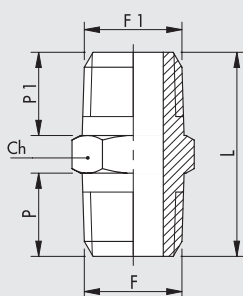
NIPPLE, PARALLEL (A1)



* Washer D11 can be used

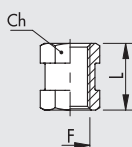
| Code | Ref. | F | F1 | Ch | P | P1 | L |
|---------|------|-----|-----|----|------|------|------|
| 2101A00 | A1 | M5 | M5 | 8 | 4.0 | 4.0 | 11.5 |
| 2101000 | A1 | M5 | 1/8 | 14 | 4.0 | 6.0 | 14.5 |
| 2101001 | A1 | 1/8 | 1/8 | 14 | 6.0 | 6.0 | 17.0 |
| 2101002 | A1 | 1/8 | 1/4 | 17 | 6.0 | 8.0 | 19.0 |
| 2101003 | A1 | 1/8 | 3/8 | 20 | 6.0 | 9.0 | 20.0 |
| 2101004 | A1 | 1/4 | 1/4 | 17 | 8.0 | 8.0 | 21.0 |
| 2101005 | A1 | 1/4 | 3/8 | 20 | 8.0 | 9.0 | 22.0 |
| 2101006 | A1 | 1/4 | 1/2 | 25 | 8.0 | 10.0 | 24.0 |
| 2101007 | A1 | 3/8 | 3/8 | 20 | 9.0 | 9.0 | 24.0 |
| 2101008 | A1 | 3/8 | 1/2 | 25 | 9.0 | 10.0 | 25.5 |
| 2101009 | A1 | 1/2 | 1/2 | 25 | 10.0 | 10.0 | 26.5 |
| 2101010 | A1 | 1/2 | 3/4 | 30 | 10.0 | 11.0 | 27.0 |
| 2101011 | A1 | 3/4 | 3/4 | 30 | 11.0 | 11.0 | 28.0 |

NIPPLE, CONICAL (A2)



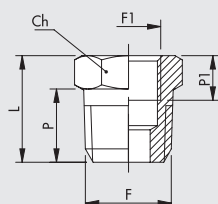
| Code | Ref. | F | F1 | Ch | P | P1 | L |
|---------|------|-----|-----|----|------|------|------|
| 2102001 | A2 | 1/8 | 1/8 | 12 | 8.0 | 8.0 | 21.0 |
| 2102002 | A2 | 1/8 | 1/4 | 14 | 8.0 | 11.0 | 24.0 |
| 2102003 | A2 | 1/8 | 3/8 | 17 | 8.0 | 11.5 | 25.0 |
| 2102004 | A2 | 1/4 | 1/4 | 14 | 11.0 | 11.0 | 27.0 |
| 2102005 | A2 | 1/4 | 3/8 | 17 | 11.0 | 11.5 | 28.0 |
| 2102006 | A2 | 1/4 | 1/2 | 22 | 11.0 | 14.0 | 32.0 |
| 2102007 | A2 | 3/8 | 3/8 | 17 | 11.5 | 11.5 | 29.0 |
| 2102008 | A2 | 3/8 | 1/2 | 22 | 11.5 | 14.0 | 32.5 |
| 2102009 | A2 | 1/2 | 1/2 | 22 | 14.0 | 14.0 | 35.0 |
| 2102010 | A2 | 1/2 | 3/4 | 27 | 14.0 | 16.5 | 37.5 |
| 2102011 | A2 | 3/4 | 3/4 | 27 | 16.5 | 16.5 | 40.0 |

SLEEVE (A3)



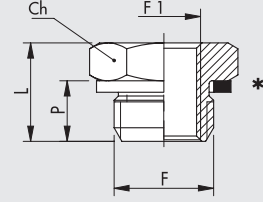
| Code | Ref. | F | Ch | L |
|---------|------|-----|----|------|
| 2103000 | A3 | M5 | 8 | 11.0 |
| 2103001 | A3 | 1/8 | 14 | 15.0 |
| 2103002 | A3 | 1/4 | 17 | 22.0 |
| 2103003 | A3 | 3/8 | 22 | 24.0 |
| 2103004 | A3 | 1/2 | 27 | 30.0 |

REDUCER, CONICAL (A4)



| Code | Ref. | F | F1 | Ch | P | P1 | L |
|---------|------|-----|-----|----|------|------|------|
| 2104001 | A4 | 1/4 | 1/8 | 14 | 11.0 | 7.0 | 16.0 |
| 2104002 | A4 | 3/8 | 1/8 | 17 | 11.5 | 7.0 | 17.0 |
| 2104003 | A4 | 3/8 | 1/4 | 17 | 11.5 | 8.0 | 17.0 |
| 2104004 | A4 | 1/2 | 1/4 | 22 | 14.0 | 8.0 | 20.0 |
| 2104005 | A4 | 1/2 | 3/8 | 22 | 14.0 | 10.0 | 20.0 |
| 2104006 | A4 | 3/4 | 1/2 | 27 | 16.5 | 11.0 | 23.5 |

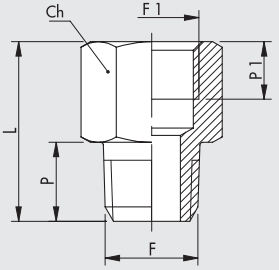
REDUCER, PARALLEL (A4/Z)



| Code | Ref. | F | F1 | Ch | P | L |
|---------|------|-----|-----|----|------|------|
| 2151000 | A4/Z | 1/8 | M5 | 14 | 6.0 | 10.0 |
| 2151001 | A4/Z | 1/4 | 1/8 | 17 | 8.0 | 13.0 |
| 2151002 | A4/Z | 3/8 | 1/8 | 20 | 9.0 | 14.0 |
| 2151003 | A4/Z | 3/8 | 1/4 | 20 | 9.0 | 14.0 |
| 2151004 | A4/Z | 1/2 | 1/4 | 25 | 10.0 | 15.5 |
| 2151005 | A4/Z | 1/2 | 3/8 | 25 | 10.0 | 15.5 |

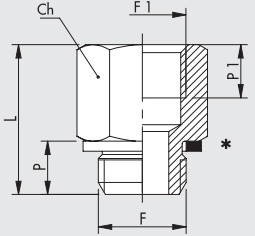
* Washer D11 can be used

REDUCER, CONICAL (A5)



| Code | Ref. | F | F1 | Ch | P | P1 | L |
|---------|------|-----|-----|----|------|------|------|
| 2105001 | A5 | 1/8 | 1/8 | 14 | 8.0 | 7.0 | 20.0 |
| 2105002 | A5 | 1/8 | 1/4 | 17 | 8.0 | 8.0 | 22.5 |
| 2105003 | A5 | 1/4 | 1/4 | 17 | 11.0 | 8.0 | 25.0 |
| 2105004 | A5 | 1/4 | 3/8 | 22 | 11.0 | 10.0 | 28.5 |
| 2105005 | A5 | 3/8 | 3/8 | 22 | 11.5 | 10.0 | 28.5 |
| 2105006 | A5 | 3/8 | 1/2 | 24 | 11.5 | 11.0 | 32.0 |
| 2105007 | A5 | 1/2 | 1/2 | 24 | 14.0 | 11.0 | 34.0 |

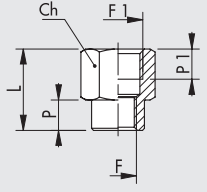
REDUCER, PARALLEL (A5/Z)



| Code | Ref. | F | F1 | Ch | P | P1 | L |
|---------|------|-----|-----|----|------|------|------|
| 2152001 | A5/Z | M5 | 1/8 | 12 | 4.0 | 7.0 | 17.0 |
| 2152002 | A5/Z | 1/8 | 1/8 | 14 | 6.0 | 7.0 | 18.5 |
| 2152003 | A5/Z | 1/8 | 1/4 | 17 | 6.0 | 8.0 | 21.5 |
| 2152004 | A5/Z | 1/4 | 1/4 | 17 | 8.0 | 8.0 | 22.5 |
| 2152005 | A5/Z | 1/4 | 3/8 | 22 | 8.0 | 10.0 | 26.0 |
| 2152006 | A5/Z | 3/8 | 3/8 | 22 | 9.0 | 10.0 | 26.5 |
| 2152007 | A5/Z | 3/8 | 1/2 | 24 | 9.0 | 11.0 | 29.5 |
| 2152008 | A5/Z | 1/2 | 1/2 | 25 | 10.0 | 11.0 | 29.5 |

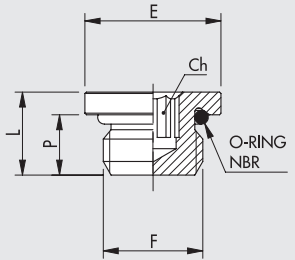
* Washer D11 can be used

REDUCER (A6)



| Code | Ref. | F | F1 | Ch | P | P1 | L |
|---------|------|-----|-----|----|------|------|------|
| 2106001 | A6 | 1/8 | 1/4 | 17 | 8.0 | 8.0 | 21.5 |
| 2106002 | A6 | 1/8 | 3/8 | 22 | 7.0 | 10.0 | 23.5 |
| 2106003 | A6 | 1/4 | 3/8 | 22 | 9.0 | 10.0 | 25.5 |
| 2106004 | A6 | 1/4 | 1/2 | 24 | 9.0 | 11.0 | 28.5 |
| 2106005 | A6 | 3/8 | 1/2 | 24 | 11.0 | 11.0 | 29.5 |

PLUG WITH HEXAGON EMBEDDED (A7)

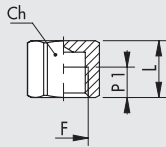


| Code | Ref. | F | Ch | P | L | E | O ring |
|---------|------|-----|-----|------|------|----|---------|
| 2107000 | A7 | M5 | 2.5 | 4.0 | 6.5 | 8 | 3.5x1.2 |
| 2107005 | A7 | M7 | 3 | 5.0 | 7.4 | 10 | 5x1.5 |
| 2107001 | A7 | 1/8 | 3 | 7.0 | 9.5 | 15 | 2031 |
| 2107002 | A7 | 1/4 | 6 | 8.0 | 11.0 | 18 | 2043 |
| 2107003 | A7 | 3/8 | 8 | 9.0 | 12.5 | 21 | 2056 |
| 2107004 | A7 | 1/2 | 10 | 11.0 | 14.5 | 26 | 3068 |

MINIATURIZED VERSION

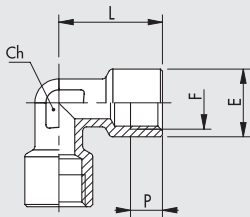
| | | | | | | | |
|---------|----|-----|-----|-----|------|------|---------|
| 2107M00 | A7 | M5 | 2.5 | 3.5 | 5.3 | 7.5 | 3.5x1.2 |
| 2107M01 | A7 | 1/8 | 4 | 5.2 | 7.2 | 13 | 2031 |
| 2107M02 | A7 | 1/4 | 6 | 6.5 | 8.8 | 16 | 2043 |
| 2107M03 | A7 | 3/8 | 8 | 7.2 | 9.7 | 19.5 | 2056 |
| 2107M04 | A7 | 1/2 | 10 | 9.2 | 12.0 | 24.5 | 3068 |

NUB (A8)



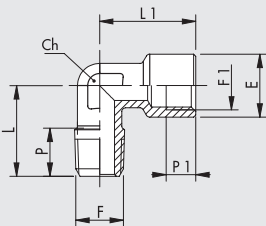
| Code | Ref. | F | Ch | P1 | L |
|---------|------|-----|----|------|------|
| 2108001 | A8 | 1/8 | 14 | 7.0 | 13.0 |
| 2108002 | A8 | 1/4 | 17 | 8.0 | 15.0 |
| 2108003 | A8 | 3/8 | 20 | 10.0 | 17.5 |
| 2108004 | A8 | 1/2 | 24 | 11.0 | 20.0 |

ELBOW, FEMALE (A9)



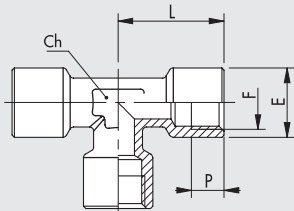
| Code | Ref. | F | Ch | P | L | E |
|---------|------|-----|----|------|------|------|
| 2109001 | A9 | 1/8 | 10 | 7.0 | 20.5 | 13.5 |
| 2109002 | A9 | 1/4 | 13 | 8.0 | 26.0 | 17.0 |
| 2109003 | A9 | 3/8 | 15 | 10.0 | 30.0 | 20.5 |
| 2109004 | A9 | 1/2 | 20 | 11.0 | 36.0 | 25.5 |

ELBOW, MALE-FEMALE (A10)



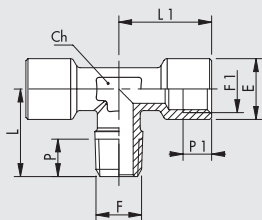
| Code | Ref. | F | F1 | Ch | P | P1 | L | L1 | E |
|---------|------|-----|-----|----|------|------|------|------|------|
| 2110001 | A10 | 1/8 | 1/8 | 10 | 8.0 | 7.0 | 16.5 | 20.5 | 13.5 |
| 2110002 | A10 | 1/4 | 1/4 | 13 | 10.5 | 8.0 | 24.5 | 26.0 | 17.0 |
| 2110003 | A10 | 3/8 | 3/8 | 15 | 11.0 | 10.0 | 26.0 | 30.0 | 20.5 |
| 2110004 | A10 | 1/2 | 1/2 | 20 | 13.0 | 11.0 | 30.0 | 36.0 | 25.5 |

TEE, FEMALE (A11)



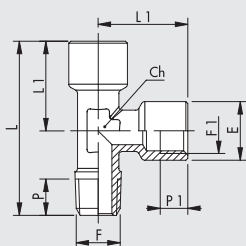
| Code | Ref. | F | Ch | P | L | E |
|---------|------|-----|----|------|------|------|
| 2111001 | A11 | 1/8 | 10 | 7.0 | 20.5 | 13.5 |
| 2111002 | A11 | 1/4 | 13 | 8.0 | 26.0 | 17.0 |
| 2111003 | A11 | 3/8 | 15 | 10.0 | 30.0 | 20.5 |
| 2111004 | A11 | 1/2 | 20 | 11.0 | 36.0 | 25.5 |

TEE, CENTRAL MALE (A12)



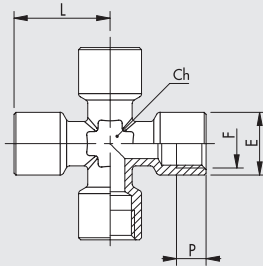
| Code | Ref. | F | F1 | Ch | P | P1 | L | L1 | E |
|---------|------|-----|-----|----|------|------|------|------|------|
| 2112001 | A12 | 1/8 | 1/8 | 10 | 8.0 | 7.0 | 16.5 | 20.5 | 13.5 |
| 2112002 | A12 | 1/4 | 1/4 | 13 | 10.5 | 8.0 | 24.5 | 26.0 | 17.0 |
| 2112003 | A12 | 3/8 | 3/8 | 15 | 11.0 | 10.0 | 26.0 | 30.0 | 20.5 |
| 2112004 | A12 | 1/2 | 1/2 | 20 | 13.0 | 11.0 | 30.0 | 36.0 | 25.5 |

TEE, LATERAL MALE (A13)



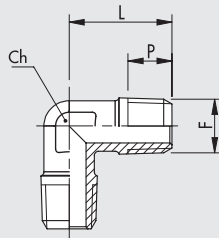
| Code | Ref. | F | F1 | Ch | P | P1 | L | L1 | E |
|---------|------|-----|-----|----|------|------|------|------|------|
| 2113001 | A13 | 1/8 | 1/8 | 10 | 8.0 | 7.0 | 37.0 | 20.5 | 13.5 |
| 2113002 | A13 | 1/4 | 1/4 | 13 | 10.5 | 8.0 | 50.5 | 26.0 | 17.0 |
| 2113003 | A13 | 3/8 | 3/8 | 15 | 11.0 | 10.0 | 56.0 | 30.0 | 20.5 |
| 2113004 | A13 | 1/2 | 1/2 | 20 | 13.0 | 11.0 | 66.0 | 36.0 | 25.5 |

EQUAL FEMALE CROSS (A14)



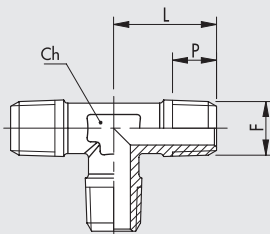
| Code | Ref. | F | Ch | P | L | E |
|---------|------|-----|----|------|------|------|
| 2114001 | A14 | 1/8 | 10 | 7.0 | 20.5 | 13.5 |
| 2114002 | A14 | 1/4 | 13 | 8.0 | 26.0 | 17.0 |
| 2114003 | A14 | 3/8 | 15 | 10.0 | 28.0 | 20.5 |

ELBOW, MALE (A15)



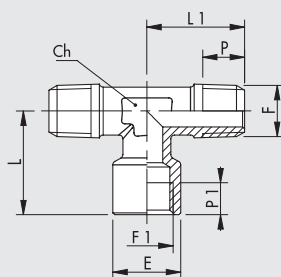
| Code | Ref. | F | Ch | P | L |
|---------|------|-----|----|------|------|
| 2115001 | A15 | 1/8 | 10 | 8.0 | 16.5 |
| 2115002 | A15 | 1/4 | 13 | 10.5 | 24.5 |
| 2115003 | A15 | 3/8 | 15 | 11.0 | 26.0 |
| 2115004 | A15 | 1/2 | 20 | 13.0 | 30.0 |

TEE, MALE (A16)



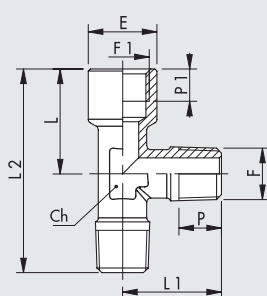
| Code | Ref. | F | Ch | P | L |
|---------|------|-----|----|------|------|
| 2116001 | A16 | 1/8 | 10 | 8.0 | 16.5 |
| 2116002 | A16 | 1/4 | 13 | 10.5 | 24.5 |
| 2116003 | A16 | 3/8 | 15 | 11.0 | 26.0 |
| 2116004 | A16 | 1/2 | 20 | 13.0 | 30.0 |

TEE, CENTRAL FEMALE (A17)



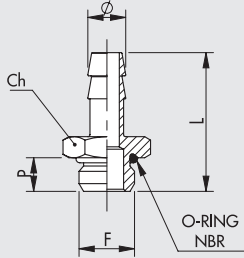
| Code | Ref. | F | F1 | Ch | P | P1 | L | L1 | E |
|---------|------|-----|-----|----|------|------|------|------|------|
| 2117001 | A17 | 1/4 | 1/4 | 13 | 10.5 | 8.0 | 26.0 | 24.5 | 17.0 |
| 2117002 | A17 | 1/8 | 1/8 | 10 | 8.0 | 7.0 | 20.5 | 16.5 | 13.5 |
| 2117003 | A17 | 3/8 | 3/8 | 15 | 11.0 | 10.0 | 30.0 | 26.0 | 20.5 |
| 2117004 | A17 | 1/2 | 1/2 | 20 | 13.0 | 11.0 | 36.0 | 30.0 | 25.5 |

TEE, LATERAL FEMALE (A18)



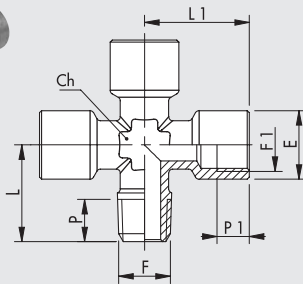
| Code | Ref. | F | F1 | Ch | P | P1 | L | L1 | E | L2 |
|---------|------|-----|-----|----|------|------|------|------|------|------|
| 2118000 | A18 | 1/8 | 1/8 | 10 | 8.0 | 7.0 | 20.5 | 16.5 | 13.5 | 37.0 |
| 2118001 | A18 | 1/4 | 1/4 | 13 | 10.5 | 8.0 | 26.0 | 24.5 | 17.0 | 50.5 |
| 2118002 | A18 | 3/8 | 3/8 | 15 | 11.0 | 10.0 | 30.0 | 26.0 | 20.5 | 56.0 |
| 2118003 | A18 | 1/2 | 1/2 | 20 | 13.0 | 11.0 | 36.0 | 30.0 | 25.5 | 66.0 |

HOSE ADAPTER, PARALLEL (A19)



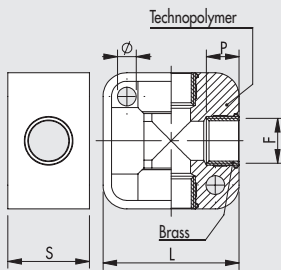
| Code | Ref. | Ø | F | Ch | P | L | O ring |
|---------|------|----|-----|----|------|------|--------|
| 2119001 | A19 | 7 | 1/8 | 15 | 6.0 | 31.0 | 2031 |
| 2119002 | A19 | 7 | 1/4 | 18 | 8.0 | 33.0 | 2043 |
| 2119003 | A19 | 8 | 1/8 | 15 | 6.0 | 31.0 | 2031 |
| 2119004 | A19 | 9 | 1/8 | 15 | 6.0 | 31.0 | 2031 |
| 2119005 | A19 | 9 | 1/4 | 18 | 8.0 | 33.0 | 2043 |
| 2119006 | A19 | 9 | 3/8 | 21 | 9.0 | 34.0 | 2056 |
| 2119007 | A19 | 12 | 1/4 | 18 | 8.0 | 33.0 | 2043 |
| 2119008 | A19 | 12 | 3/8 | 21 | 9.0 | 34.0 | 2056 |
| 2119009 | A19 | 12 | 1/2 | 26 | 11.0 | 36.0 | 3068 |
| 2119010 | A19 | 17 | 3/8 | 21 | 9.0 | 34.0 | 2056 |
| 2119011 | A19 | 17 | 1/2 | 26 | 11.0 | 36.0 | 3068 |

MALE-FEMALE EQUAL CROSS (A20)



| Code | Ref. | F | F1 | Ch | P | P1 | L | L1 | E |
|---------|------|-----|-----|----|------|-----|------|------|------|
| 2120001 | A20 | 1/8 | 1/8 | 10 | 8.0 | 7.0 | 16.5 | 20.5 | 13.5 |
| 2120002 | A20 | 1/4 | 1/4 | 13 | 10.5 | 8.0 | 24.5 | 26.0 | 17.0 |

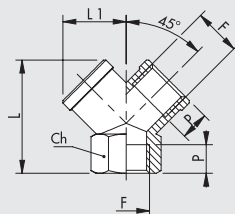
TEE CROSS (A21)



| Code | Ref. | F | Ø | P | L | THICKNESS |
|---------|------|-----|-----|------|------|-----------|
| 2121001 | A21 | 1/8 | 4.5 | 8.0 | 31.0 | 17.5 |
| 2121002 | A21 | 1/4 | 5.5 | 9.0 | 40.0 | 24.0 |
| 2121003 | A21 | 3/8 | 5.5 | 12.0 | 50.0 | 28.0 |
| 2121004 | A21 | 1/2 | 5.5 | 12.0 | 50.0 | 34.0 |

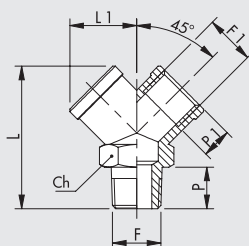
Maximum operating conditions for the A21s are different from other A-series fittings, namely max P13 bar, max T 50°C

Y, FEMALE 90° (A23)



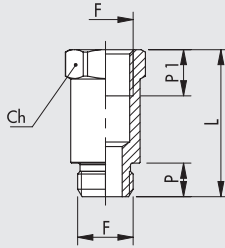
| Code | Ref. | F | Ch | P | L | L1 |
|---------|------|-----|----|------|------|------|
| 2123001 | A23 | 1/8 | 13 | 8 | 26.5 | 14.5 |
| 2123002 | A23 | 1/4 | 17 | 11 | 32.0 | 18.0 |
| 2123003 | A23 | 3/8 | 20 | 11.5 | 36.5 | 20.5 |
| 2123004 | A23 | 1/2 | 25 | 14 | 44.5 | 26.5 |

Y, MALE 90° (A24)



| Code | Ref. | F | F1 | Ch | P | P1 | L | L1 |
|---------|------|-----|-----|----|------|------|------|------|
| 2124001 | A24 | 1/8 | 1/8 | 13 | 8.0 | 8.0 | 32.0 | 14.5 |
| 2124002 | A24 | 1/4 | 1/4 | 17 | 11.0 | 11.0 | 38.0 | 18.0 |
| 2124003 | A24 | 3/8 | 3/8 | 20 | 11.5 | 11.5 | 42.0 | 20.5 |
| 2124004 | A24 | 1/2 | 1/2 | 25 | 14.0 | 14.0 | 53.0 | 26.5 |

EXTENSION (A25)



| Code | Rif. | F | Ch | P | L | P1 |
|---------|------|-----|----|-----|------|------|
| 2150003 | A25 | 1/8 | 14 | 6.0 | 22.0 | 8.0 |
| 2150004 | A25 | 1/8 | 14 | 6.0 | 42.0 | 8.0 |
| 2150005 | A25 | 1/8 | 14 | 6.0 | 51.0 | 8.0 |
| 2150006 | A25 | 1/4 | 17 | 8.0 | 35.0 | 11.0 |
| 2150007 | A25 | 1/4 | 17 | 8.0 | 51.0 | 11.0 |

TAPERED THREAD FITTINGS SERIES A WITH PTFE

Metal Work can supply fittings with a tapered thread coated in polytetrafluorethylene. This system provides the pneumatic seal between the fitting and the female thread. It is therefore not necessary to add other sealing systems during assembly, such as adhesives or Teflon tape. This significantly reduces assembly times. The physical and technical features of the material used ensure that the properties are maintained through time and in a wide range of operating temperatures. This coating can be used with series A fittings types A2, A4, A5, A10, A12, A13, A15, A16, A17, A18 and A25 that have a 1/8" to 1/2" gas taper thread.

| TECHNICAL DATA | | |
|----------------------------|----|---------------|
| Temperature range for PTFE | °C | - 45 to + 80 |
| | °F | - 49 to + 176 |

KEY TO CODES

Fittings with a PTFE thread have the same code as the standard fitting, with the addition of the suffix **T**. For example A2 1/8 1/8 fitting has code **2102001**, so the PTFE version has code **2102001T**.

NOTES