

STANDARD FITTINGS SERIES XA

- Body made of AISI 316L (EN 1.4404) stainless steel
- Operating temperature for fittings with O-ring seals:
-20 to 200 °C / -4 to 392 °F
- Maximum pressure 200 bar - 20000 KPa - 2900 psi

CONFORMITY DECLARATIONS

- DM 174
- DM 21/03/73
- Regulation 1935/04 EU.*
- Regulation 2023/06 EU.



CERTIFIED

- NSF/ANSI 169 standard:
products in contact with food.

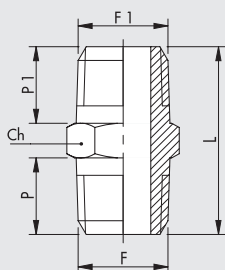


* Release tests performed at 100°C for 3 successive 30-minute attacks with 4% acetic acid solution and distilled water.

STANDARD FITTINGS SERIES XA

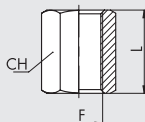
FITTINGS

NIPPLE, CONICAL (XA2)



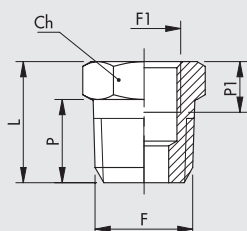
Code	Ref.	F	F1	Ch	P	P1	L
2102001X	XA2	1/8	1/8	12	7.5	7.5	20
2102002X	XA2	1/8	1/4	14	7.5	11	23.5
2102004X	XA2	1/4	1/4	14	11	11	27
2102005X	XA2	1/4	3/8	17	11	11.5	27.5
2102007X	XA2	3/8	3/8	17	11.5	11.5	28
2102008X	XA2	3/8	1/2	22	11.5	14	31.5
2102009X	XA2	1/2	1/2	22	14	14	34

SLEEVE (XA3)



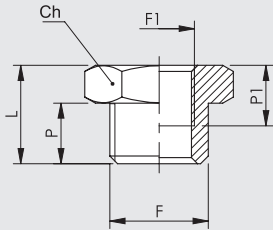
Code	Ref.	F	Ch	L
2103001X	XA3	1/8	14	15
2103002X	XA3	1/4	17	22
2103003X	XA3	3/8	22	24
2103004X	XA3	1/2	27	30

REDUCER, CONICAL (XA4)



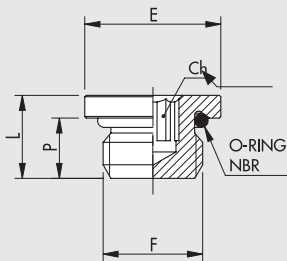
Code	Ref.	F	F1	Ch	P	P1	L
2104001X	XA4	1/4	1/8	14	11	8	16
2104002X	XA4	3/8	1/8	17	11.5	8	16.5
2104009X	XA4	1/2	1/8	22	14	8	19.5
2104003X	XA4	3/8	1/4	17	11.5	10	16.5
2104004X	XA4	1/2	1/4	22	14	10	19.5
2104005X	XA4	1/2	3/8	22	14	10	19.5

REDUCER, PARALLEL (XA4Z)



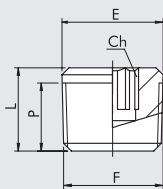
Code	Ref.	F	F1	Ch	P	P1	L
2151000X	XA4Z	1/8	M5	14	6	8	10.5
2151001X	XA4Z	1/4	1/8	17	8	8	13
2151003X	XA4Z	3/8	1/4	19	9	10	14

PLUG WITH HEXAGON EMBEDDED (XA7)



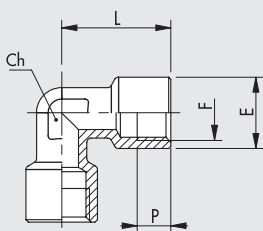
Code	Ref.	F	Ch	P	L	E
2107001X	XA7	1/8	5	5	7.5	13
2107002X	XA7	1/4	6	6.5	9.5	16
2107003X	XA7	3/8	8	7	10	20
2107004X	XA7	1/2	10	8.5	12	25

TAPER MALE PLUG (XA7C)



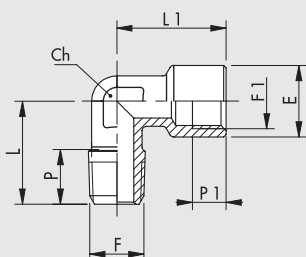
Code	Ref.	F	Ch	P	L	E
2107C01X	XA7C	1/8	5	5	7.5	13
2107C02X	XA7C	1/4	6	6.5	9.5	16
2107C03X	XA7C	3/8	8	7	10	20
2107C04X	XA7C	1/2	10	8.5	12	25

ELBOW, FEMALE (XA9)



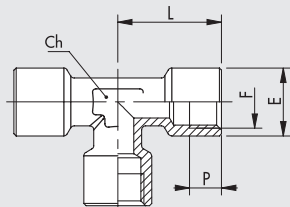
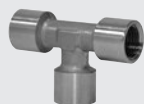
Code	Ref.	F	Ch	P	L	E
2109001X	XA9	1/8	10	8	22	13
2109002X	XA9	1/4	12	10	26	16.5
2109003X	XA9	3/8	17	10	28	20
2109004X	XA9	1/2	19	13	34	25

ELBOW, MALE-FEMALE (XA10)



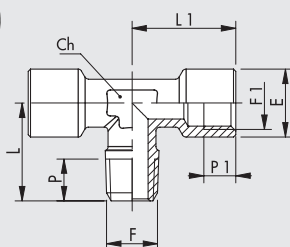
Code	Ref.	F	F1	Ch	P	P1	L	L1	E
2110001X	XA10	1/8	1/8	10	6	8	17	22	13
2110002X	XA10	1/4	1/4	12	9	10	21.5	26	16.5
2110003X	XA10	3/8	3/8	17	11	10	24.5	28	20
2110004X	XA10	1/2	1/2	19	13	13	30.5	34	25

TEE, FEMALE (XA11)



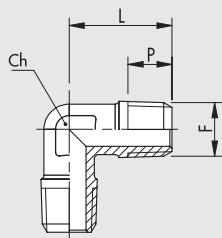
Code	Ref.	F	Ch	P	L	E
2111001X	XA11	1/8	10	8	22	13
2111002X	XA11	1/4	12	10	26	16.5
2111003X	XA11	3/8	17	10	28	20
2111004X	XA11	1/2	19	13	34	25

TEE, CENTRAL MALE (XA12)



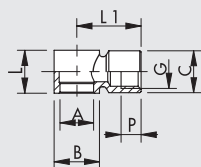
Code	Ref.	F	F1	Ch	P	P1	L	L1	E
2112001X	XA12	1/8	1/8	10	6	8	17	22	13
2112002X	XA12	1/4	1/4	12	9	10	21.5	26	16.5
2112003X	XA12	3/8	3/8	17	11	10	24.5	28	20
2112004X	XA12	1/2	1/2	19	13	13	30.5	34	25

ELBOW, MALE (XA15)



Code	Ref.	F	Ch	P	L
2115001X	XA15	1/8	10	6	17
2115002X	XA15	1/4	12	9	21.5
2115003X	XA15	3/8	17	11	24.5
2115004X	XA15	1/2	19	13	30.5

SINGLE BANJO PASSING TROUGH BODY (XD12)



Code	Ref.	A	G	B	C	L	L1	P
2412001X	XD12	1/8	1/8	14	14	15	18.5	8
2412002X	XD12	1/4	1/4	17	17	17	24	10
2412003X	XD12	3/8	3/8	22	20	20	29	10
2412004X	XD12	1/2	1/2	25	26	24	34.5	14

NOTES

Blank area for notes.