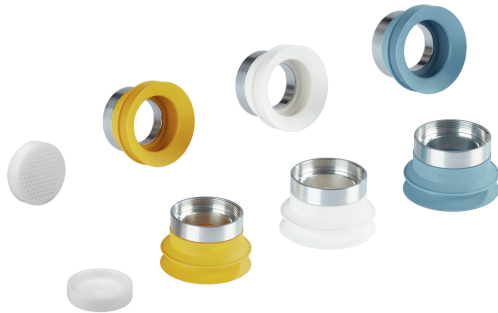
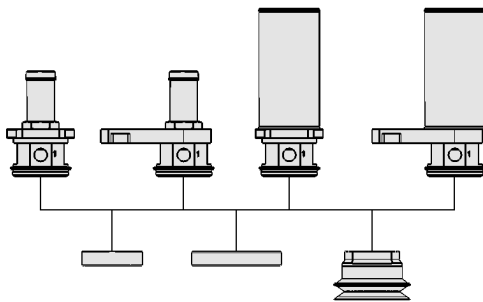


# Suction Cups for Flow Grippers SCG

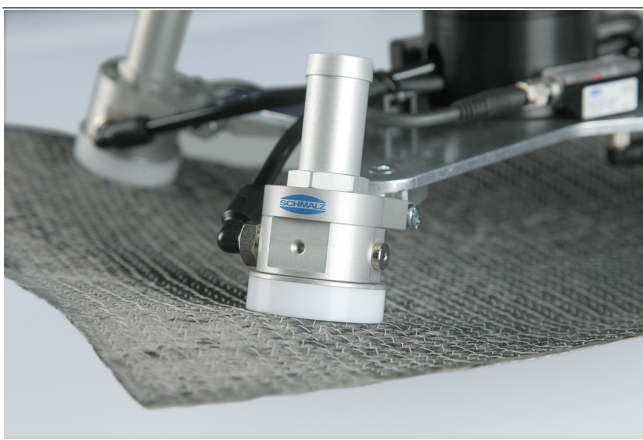
Suction area (Ø) from 20 mm to 50 mm



Suction Cups for Flow Grippers SCG



System Design Suction Cups for Flow Grippers SCG



Flow grippers SCG when handling bakery products

## Suitability for Industry Specific Applications

### Applications

- Handling of composite textiles
- Handling of non-rigid and unstable components
- Handling of extremely thin, delicate plastic films and glass
- Handling of blank and assembled printed circuit boards
- Handling of dry food products

### Design

- Suction cup connector made from aluminum (FDA compliant)
- Suction cup (suction area Ø 20 mm to 50 mm) made from SI-MD or SI-HD (FDA compliant) or NBR-ESD (electrostatic)
- Large shaft diameter for high flow rates

### Product Highlights

- Contact elements optionally food-safe (POM, SI-MD and SI-HD) or for controlled discharge of electrical charges (NBR-ESD)
- Very high suction flow rate enables safe gripping even of porous, highly structured workpieces
- Soft, flexible sealing lip for best damping and sealing on structured surfaces such as biscuits
- Suction surface made of POM prevents suction and damage to the workpiece
- Suction cup can be dismantled without tools for easy cleaning

# Suction Cups for Flow Grippers SCG

Suction area (Ø) from 20 mm to 50 mm

## Designation Code Suction Cups for Flow Grippers SCG

<b>SAUG-SCG</b>	–	<b>20</b>	–	<b>SI-MD-55</b>	–	<b>602</b>	–	<b>B</b>
<b>1</b>		<b>2</b>		<b>3</b>		<b>4</b>		<b>5</b>

### 1 – Abbreviated designation

Code	Version
SAUG-SCG	SAUG-SCG
SAUG-FL SCG	SAUG-FL SCG

### 4 – Standard

Code	Standard
602	DIN EN 602

### 2 – Suction area

Code	Diameter in mm
20...50	ø 20 to 50

### 5 – Design

Code	Type
B	Bellows suction cup

### 3 – Material

Code	Material
POM	Polyoxymethylene
NBR-ESD-55	Nitrile caoutchuc
SI-MD-55	Silicone
SI-HD	Silicone

The flow gripper SCG for dry food s designed in two parts. In order to receive a complete gripper (flow gripper + suction cup) the following ordering steps are required:

- Flow gripper (step1) – available for axial or sideways mounting
- Suction cup (step 2)

Available accessories: plug-in screw union

## Ordering Data Suction Cups for Flow Grippers SCG

Type	Part no.
Suction area	SAUG-FL SCG 40 POM
Suction area	SAUG-FL SCG 60 POM
	10.01.30.00030
	10.01.30.00031

Type	Part no.
Suction cup (round)	SAUG-SCG 20 NBR-ESD-55 602 B
Suction cup (round)	SAUG-SCG 30 NBR-ESD-55 602 B
Suction cup (round)	SAUG-SCG 40 NBR-ESD-55 602 B
Suction cup (round)	SAUG-SCG 50 NBR-ESD-55 602 B
Suction cup (round)	SAUG-SCG 20 SI-MD-55 602 B
Suction cup (round)	SAUG-SCG 30 SI-MD-55 602 B
Suction cup (round)	SAUG-SCG 40 SI-MD-55 602 B
Suction cup (round)	SAUG-SCG 50 SI-MD-55 602 B
Suction cup (round)	SAUG-SCG 20 SI-HD-65 602 B
Suction cup (round)	SAUG-SCG 30 SI-HD-65 602 B
Suction cup (round)	SAUG-SCG 40 SI-HD-65 602 B
Suction cup (round)	SAUG-SCG 50 SI-HD-65 602 B
	10.01.30.01083
	10.01.30.01084
	10.01.30.01085
	10.01.30.01086
	10.01.30.01079
	10.01.30.01080
	10.01.30.01081
	10.01.30.01082
	10.01.30.01099
	10.01.30.01100
	10.01.30.01101
	10.01.30.01102

Type	Part no.
Suction cup (round)	SAUG-SCG 50 SI-HD-65
Suction cup (round)	SAUG-SCG 30 SI-HD-65
Suction cup (round)	SAUG-SCG 40 SI-HD-65
Suction cup (round)	SAUG-SCG 20 SI-HD-65
Suction cup (round)	SAUG-SCG 20 SI-55
Suction cup (round)	SAUG-SCG 30 SI-55
Suction cup (round)	SAUG-SCG 40 SI-55
Suction cup (round)	SAUG-SCG 50 SI-55
Suction cup (round)	SAUG-SCG 20 NBR-CO-55
Suction cup (round)	SAUG-SCG 30 NBR-CO-55
Suction cup (round)	SAUG-SCG 40 NBR-CO-55
Suction cup (round)	SAUG-SCG 50 NBR-CO-55
	10.01.30.00593
	10.01.30.00655
	10.01.30.00660
	10.01.30.00661
	10.01.30.00665
	10.01.30.00666
	10.01.30.00667
	10.01.30.00668
	10.01.30.00716
	10.01.30.00717
	10.01.30.00718
	10.01.30.00719