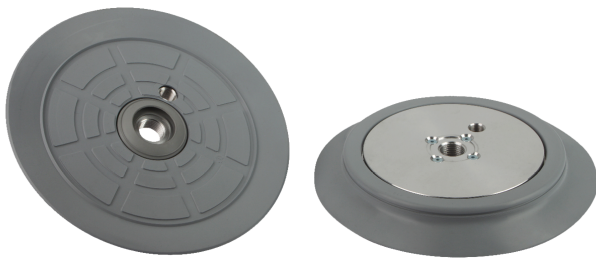
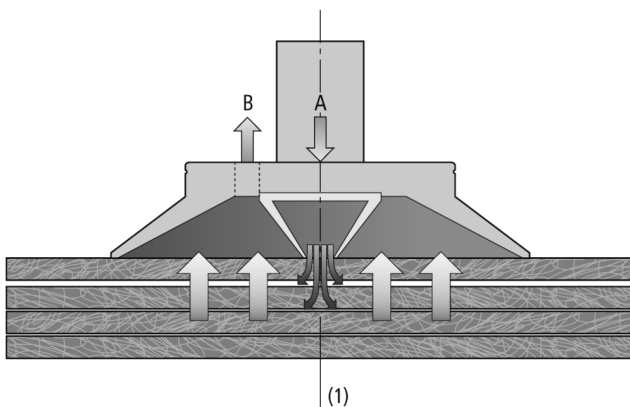


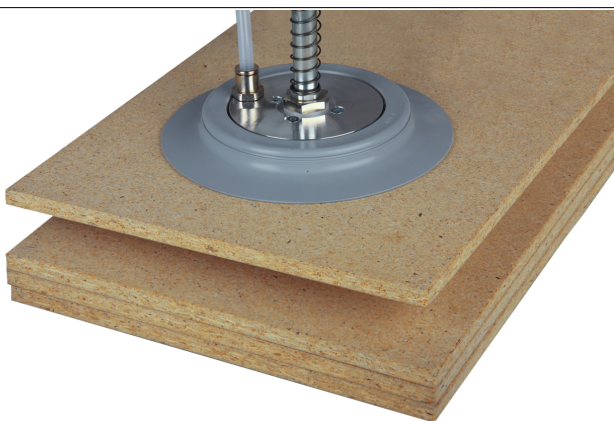
Suction Plates SPC



Suction Plates SPC



System Design Suction Plates SPC



Suction plates SPC in the handling of pressed wood panels

Suitability for Industry Specific Applications

Applications

- Round suction plate for handling and separation of flat, porous or absorbent workpieces
- Separation of workpieces by injection of a throttled flow of compressed air into a separate area of the suction cup

Design

- Robust, wear-resistant suction cup SPC with double sealing lip, consisting of two seals (inner and outer) and aluminum supporting plate
- Seals are clipped securely into the supporting plate with specially shaped sections
- Inner seal separates the central cell for the flow of compressed air from the vacuum area
- When worn, the seals can be replaced separately; the aluminum supporting plate can be re-used
- The supporting plate has one threaded hole in the center (for connection of the compressed air A) for the separation (1) and a second threaded hole towards the edge (for connection of the vacuum B) for gripping
- Series SPC-TV with touch valve: deactivation of unused suction cups to prevent the entry of unwanted air

Product Highlights

- Suction cup with double sealing lip for flat, porous or absorbent materials such as MDF, hard fibre
- Separation function by compressed air impulse prevents self-adhesion when stacking porous boards
- Fastest cycle times thanks to low own volume
- High suction force with small dimensions

Suction Plates SPC

Ordering Data Suction Plates SPC

Type	Part no.
SPC 250 NBR-55 G1/2-IG TV	10.01.01.01211
SPC 210 NBR-55 G1/2-IG	10.01.01.01187
SPC 210 NBR-55 G1/2-IG TV	10.01.01.01188
SPC 250 NBR-55 G1/2-IG	10.01.01.01189
SPC 160 NBR-55 G1/2-IG	10.01.01.01185
SPC 160 NBR-55 G1/2-IG TV	10.01.01.01186

Ordering Data Spare Parts Suction Plates SPC

Type	Spare Parts	Part no.
SPC 160 NBR-55 G1/2-IG	DR-SPC 33 HNBR-65	10.01.01.11371
SPC 160 NBR-55 G1/2-IG TV	DR-SPC 33 HNBR-65	10.01.01.11371
SPC 210 NBR-55 G1/2-IG	DR-SPC 33 HNBR-65	10.01.01.11371
SPC 210 NBR-55 G1/2-IG TV	DR-SPC 33 HNBR-65	10.01.01.11371
SPC 250 NBR-55 G1/2-IG	DR-SPC 33 HNBR-65	10.01.01.11371
SPC 250 NBR-55 G1/2-IG TV	DR-SPC 33 HNBR-65	10.01.01.11371

Type	Spare Parts	Part no.
SPC 160 NBR-55 G1/2-IG	DR-SPC 160 NBR-55	10.01.01.01190
SPC 160 NBR-55 G1/2-IG TV	DR-SPC 160 NBR-55	10.01.01.01190
SPC 210 NBR-55 G1/2-IG	DR-SPC 210 NBR-55	10.01.01.01191
SPC 210 NBR-55 G1/2-IG TV	DR-SPC 210 NBR-55	10.01.01.01191
SPC 250 NBR-55 G1/2-IG	DR-SPC 250 NBR-55	10.01.01.01192
SPC 250 NBR-55 G1/2-IG TV	DR-SPC 250 NBR-55	10.01.01.01192

Technical Data Suction Plates SPC

Type	Suction force (-600 mbar) [N]*	Suction force d2 [N]	Volume [cm ³]	Hose diameter (recom.) d [mm]**	
SPC 160	-	975	475	156.134	12
SPC 160	Sensing valve	975	475	156.134	9
SPC 210	-	1,760	1,125	193.272	12
SPC 210	Sensing valve	1,760	1,125	193.272	9
SPC 250	-	2,540	1,815	387.994	12
SPC 250	Sensing valve	2,540	1,815	387.994	12

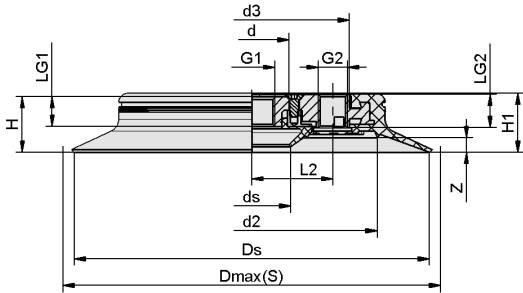
*The specified suction forces are theoretical values at a vacuum of -0.6 bar and with a smooth, dry workpiece surface - they do not include a safety factor

**The recommended hose diameter is based on a hose length of approx. 2 m

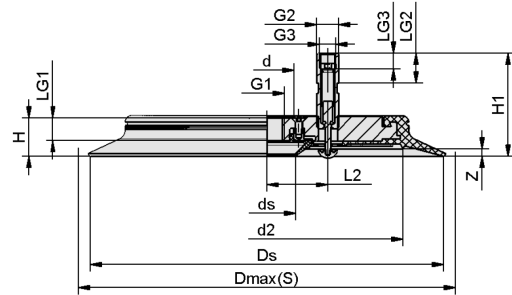
Suction Plates SPC



Design Data Suction Plates SPC



SPC 160 - 250 IG



SPC 160 - 250 IG TV



Suction Plates SPC

Design Data Suction Plates SPC

Type	d [mm]	d2 [mm]	d3 [mm]	ds [mm]	Dmax(S) [mm]*	Ds [mm]	G1	G2
SPC 160 NBR-55 G1/2-IG TV	34	113	-	33.5	162.5	160.0	G1/2"-F	G1/4"-M
SPC 160 NBR-55 G1/2-IG	34	113	88	33.5	170.0	160.0	G1/2"-F	G1/4"-F
SPC 210 NBR-55 G1/2-IG	34	163	138	33.5	215.0	210.0	G1/2"-F	G1/4"-F
SPC 210 NBR-55 G1/2-IG TV	34	163	-	33.5	215.0	210.0	G1/2"-F	G1/4"-M
SPC 250 NBR-55 G1/2-IG TV	34	203	-	33.5	252.5	250.0	G1/2"-F	G1/2"-M
SPC 250 NBR-55 G1/2-IG	34	203	178	33.5	263.0	252.0	G1/2"-F	G1/2"-F

*External dimension of the suction cup when it is pressed against the workpiece by the vacuum

Type	G3	H [mm]	H1 [mm]	L2 [mm]	LG1 [mm]	LG2 [mm]	LG3 [mm]	Z (Stroke) [mm]
SPC 160 NBR-55 G1/2-IG	-	25	26.0	36.5	13.5	15	-	8
SPC 160 NBR-55 G1/2-IG TV	G1/8"-F	25	62.0	36.5	13.5	18	6	7
SPC 210 NBR-55 G1/2-IG	-	23	24.5	36.5	13.5	15	-	5
SPC 210 NBR-55 G1/2-IG TV	G1/8"-F	23	62.0	36.5	13.5	18	10	5
SPC 250 NBR-55 G1/2-IG	-	25	26.5	76.0	13.5	15	-	7
SPC 250 NBR-55 G1/2-IG TV	G1/8"-F	25	67.0	76.0	13.5	16	12	7