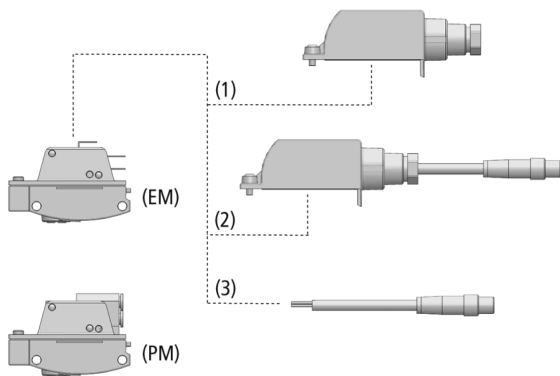


# Vacuum Switches VS-V-PM/EM-ST

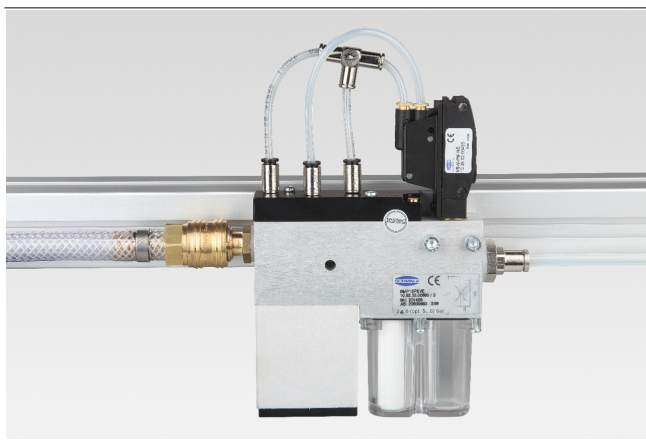
Measuring range from -1 bar to 0 bar



Vacuum Switches VS-V-PM/EM-ST



System Design Vacuum Switches VS-V-PM/EM-ST



Mounting example vacuum switch VS-V-PM

## Suitability for Industry Specific Applications

### Applications

- Mechanical vacuum switch for process monitoring
- Optimization of cycle times or regulation circuits
- Application in processes where an electric or pneumatic signal related to a defined vacuum value is required
- Can be used as a measuring and switching element

### Design

- Vacuum switch in electro-mechanical (EM) and pneumatic (PM) version
- VS-V-EM-ST with one digital switching output in NO/NC version
- VS-V-PM with pneumatic output in NO or alternatively NC version
- Robust and hard-wearing plastic housing
- Optional for EM Version: cover (1) for IP-protection and strain relief of the connection cable or cover (2) for IP-protection and mounted M8 4-pin plug
- 2 m cable (3) with M8 plug, 4-pin (optional for EM version)

### Product Highlights

- Precisely operating switch in robust plastic housing
- Electromechanical design allows switching of DC and AC voltage
- Pneumatic version requires no electric connectors
- Switching point adjustable according to customer requirements

# Vacuum Switches VS-V-PM/EM-ST

Measuring range from -1 bar to 0 bar

## Designation Code Vacuum Switches VS-V-PM/EM-ST

<b>VS</b>	-	<b>V</b>	-	<b>EM</b>	-	<b>ST</b>
1		2		3		4

### 1 – Abbreviated designation

Code	Version
VS	VS

### 2 – Measuring range

Code	Measuring range in bar
V	-1 to 0

### 3 – Variant

Code	Type
EM	Electromechanical
PM	Pneumatical

### 4 – Connection electrical

Code	Connection
NC	Normally closed
NO	Normally open
ST	Contact of flat-pin plug (for EM version)

Vacuum switch VS-V-PM/EM-ST is delivered as a ready-to-connect product (without connection cable).

Available accessories: cover, connection cable

## Ordering Data Vacuum Switches VS-V-PM/EM-ST

Type	Part no.
VS-V-EM-ST	10.06.02.00457
VS-V-PM-NC	10.06.02.00455
VS-V-PM-NO	10.06.02.00456

## Ordering Data Accessories Vacuum Switches VS-V-PM/EM-ST

Type	Cover ABDK-M8-4	Cover ABDK-ST	Connection cable M8-4
VS-V-EM-ST	10.06.02.00454	10.06.02.00453	10.06.02.00460

## Technical Data Vacuum Switches VS-V-PM/EM-ST

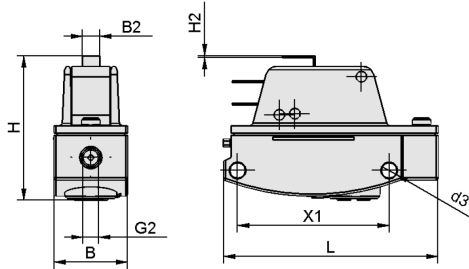
Type	Measured medium	Measuring range [bar]	Max. overpressure safety [bar]	Repeatability	Hysteresis	Switching capacity [A]	Switching frequency [Hz]
VS-V-EM-ST	Non-aggressive gases; dry, oil-free air	-1,00 ... 0,00 bar	6	± 3% of full-scale value	Fixed: 60...80 mbar	10	1
VS-V-PM-NC	Non-aggressive gases; dry, oil-free air	-1,0 ... 0,0 bar	6	± 3% of full-scale value	Fixed: approx. 40 mbar	-	-
VS-V-PM-NO	Non-aggressive gases; dry, oil-free air	-1,0 ... 0,0 bar	6	± 3% of full-scale value	Fixed: approx. 10 mbar	-	-

Type	Electrical connection	Control pressure range [bar]	Voltage	Flow rate max. [l/min]	Protection type IP	Operating temperature [°C]	Weight [g]
VS-V-EM-ST	Plug-in connection	-	max. 30V DC/ 250V AC	-	IP 65 (with cover)	0 ... 60 °C	33
VS-V-PM-NC	-	1.5 ... 8.0	-	100	-	0 ... 50 °C	33
VS-V-PM-NO	-	1.5 ... 8.0	-	100	-	0 ... 50 °C	33

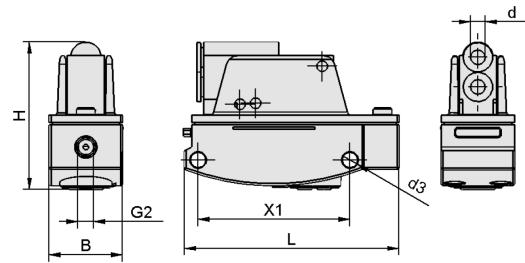
# Vacuum Switches VS-V-PM/EM-ST

Measuring range from -1 bar to 0 bar

## Design Data Vacuum Switches VS-V-PM/EM-ST



VS-V-EM-ST



VS-V-PM

## Vacuum Switches VS-V-PM/EM-ST

Measuring range from -1 bar to 0 bar

### Design Data Vacuum Switches VS-V-PM/EM-ST

Type	B [mm]	B2 [mm]	d [mm]	d3 [mm]	G2	H [mm]	H2 [mm]	L [mm]	X1 [mm]
VS-V-EM-ST	19.8	4.8	-	4.2	M5-F	36.1	0.5	58	41
VS-V-PM-NC	19.8	-	4	4.2	M5-F	40.0	-	58	41
VS-V-PM-NO	19.8	-	4	4.2	M5-F	40.0	-	58	41