

# IN-LINE STOP VALVE SERIES STP L

The STP L stop valve belongs to the LINE ON LINE® family and can be connected in series or in parallel with the other products in the same family. It is available in a version for pipe-pipe connection, which includes two push-in fittings, and a version for thread-pipe connection, which includes a nickel-plated brass male thread and a push-in fitting. The stop valve is normally mounted on the inlet port of cylinders and allows the flow of air only in the presence of a pneumatic pilot.

Cylinder movement ceases if there is a drop in pneumatic pilot pressure. The compressed air port is a push-in fitting for  $\text{Ø } 4$  ( $\text{Ø}5/32''$ ) pipe. This stop valve is available in a unidirectional version, so the flow can be interrupted in one direction, but remains free in the other direction. This valve can also be used as a unidirectional normally-closed 2/2 pneumatic control valve.

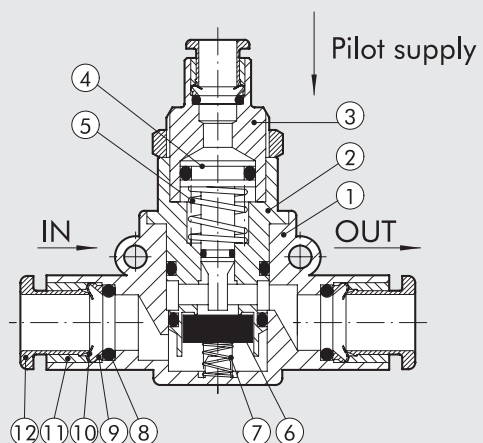


## TECHNICAL DATA

		Ø 6	Ø 8 (Ø5/16")
Max. operating pressure	MPa	1	
	bar	10	
	psi	145	
Temperature range	°C	-20 to +60	
	°F	-4 to +140	
Recommended pipe		Rilsan PA 11 - Nylon 6 - Polyamide 12 - Polypropylene	
Fluid		Lubricated or unlubricated filtered compressed air; if used, must be continuous	
Compatibility with oils		See <b>chapter Z1</b>	

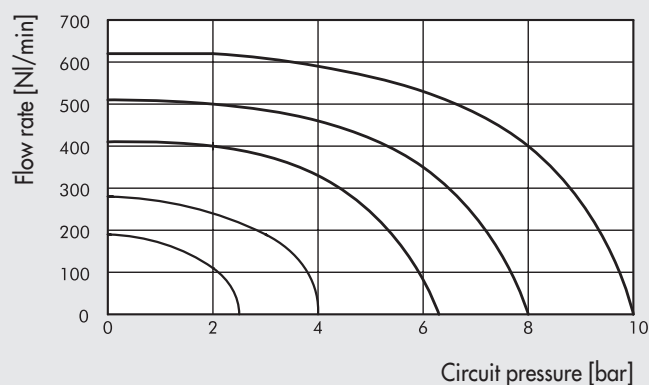
## COMPONENTS

- ① Technopolymer body
- ② Nickel-plated brass insert
- ③ Nickel-plated brass pilot insert
- ④ Brass piston rod
- ⑤ Stainless steel clamping spring
- ⑥ NBR seal
- ⑦ Stainless steel poppet spring
- ⑧ NBR seal
- ⑨ Technopolymer spring ring
- ⑩ Stainless steel clip-on spring
- ⑪ Technopolymer stop bushing
- ⑫ Technopolymer release bushing

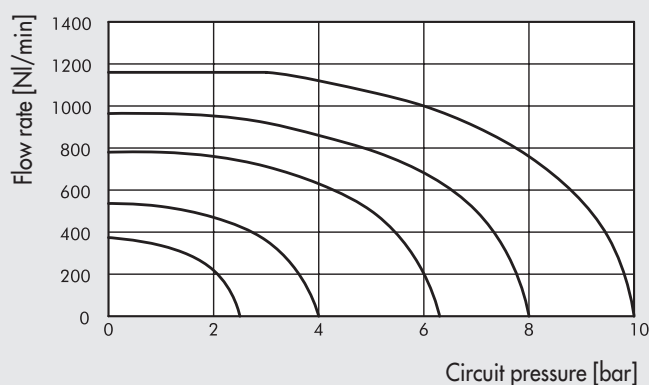


## FLOW CHARTS

STP L Ø 6

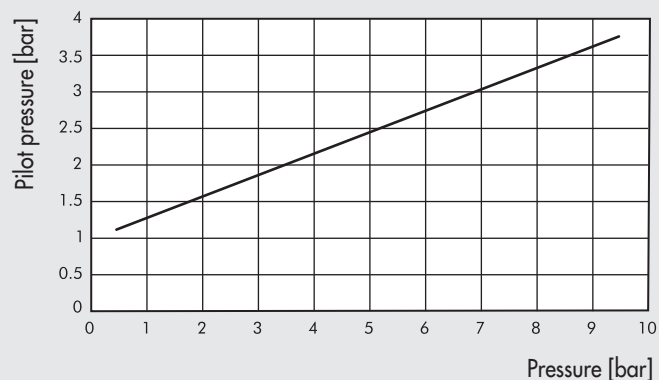


STP L Ø 8 (Ø5/16")

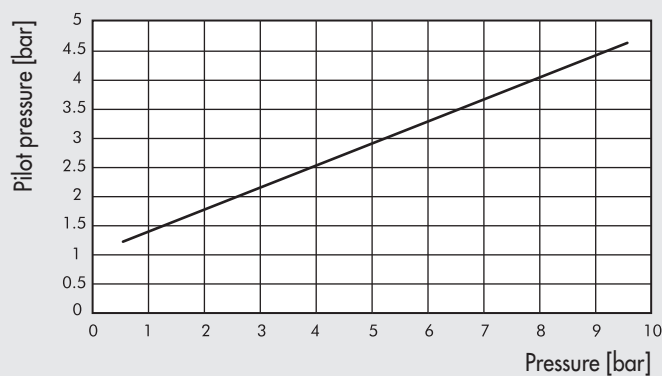


## MINIMUM PILOT PRESSURE

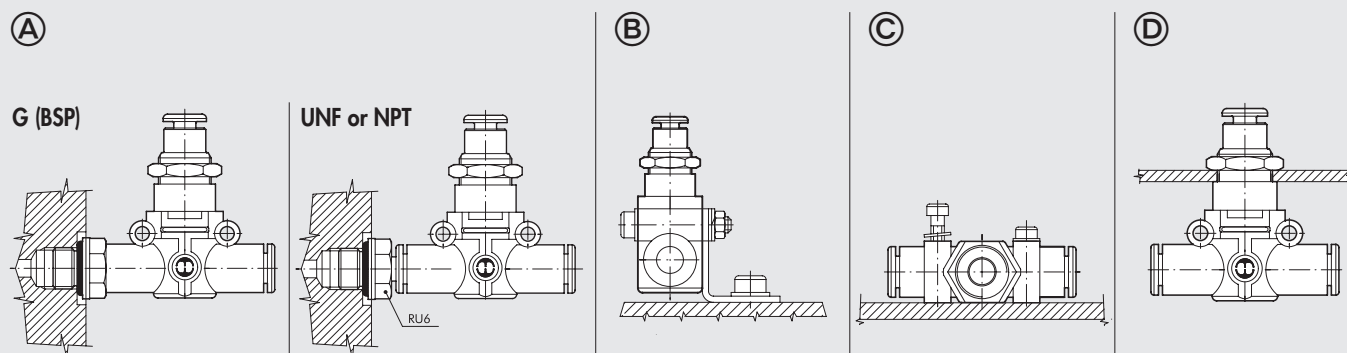
STP L Ø 6



STP L Ø 8 (Ø5/16")



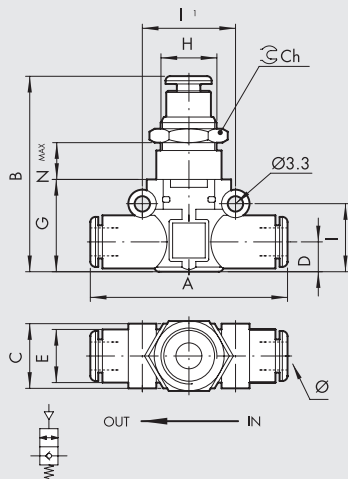
## ASSEMBLY OPTIONS



How to mount the STP L:

- Fig. **A** **G (BSP)**: With the male threaded port it is possible to mount the STP L straight onto the actuator or the control valve.  
**UNF or NPT**: Adding a RU6 fitting, with his male UNF or NPT thread, it is possible to mount the STP L straight on to the actuator or the control valve.
- Fig. **B** Fixing to the plate with the special SQU L bracket.
- Fig. **C** There are two robust rings on the plastic body for fixing the STP L straight onto the wall.
- Fig. **D** The ring nut is screwed onto the threaded metal part of the STP L body for panel mounting.

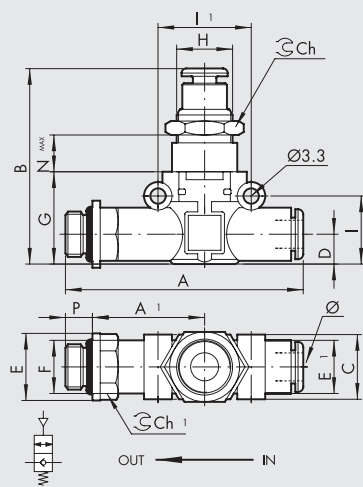
## STP L 2/2 PIPE - PIPE



Code	Ref.	Ø	A	B	C	D	E	G	H	I	II	Ch	Nmax
9065616	STP L 2/2 Ø6 - Ø6	6	49.4	43.2	14.7	6.4	11.4	20	M12x0.75	14.6	20	15	12
9065624	STP L 2/2 Ø8 - Ø8	8 ▲	57.3	49.7	18.7	9.1	13.8	26	M15x1	18.7	24	17	11.8

▲ Ø8 = Ø5/16"

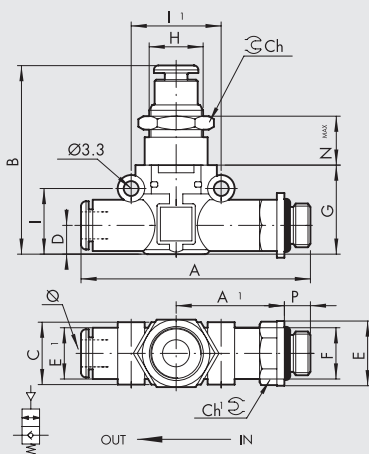
## STP L 2/2 PIPE - G (BSP) THREAD



Code	Ref.	Ø	F	P	A	A1	B	C	D	E	E1	G	H	I	II	Ch	Ch1	Nmax
9065808	STP L 2/2 Ø6 - 1/8	6	1/8	6	58.5	27.8	43.2	14.7	6.4	14	11.4	20	M12x0.75	14.6	20	15	12	12
9065809	STP L 2/2 Ø6 - 1/4	6	1/4	8	61.5	28.8	43.2	14.7	6.4	18	11.4	20	M12x0.75	14.6	20	15	14	12
9065810	STP L 2/2 Ø8 - 1/8	8 ▲	1/8	6	66.2	31.8	49.7	18.7	9.1	15	13.8	26	M15x1	18.7	24	17	14	11.8
9065811	STP L 2/2 Ø8 - 1/4	8 ▲	1/4	8	70.6	34.2	49.7	18.7	9.1	18	13.8	26	M15x1	18.7	24	17	14	11.8
9065812	STP L 2/2 Ø8 - 3/8	8 ▲	3/8	9	72.2	34.8	49.7	18.7	9.1	22	13.8	26	M15x1	18.7	24	17	17	11.8

▲ Ø8 = Ø5/16"

## STP L 2/2 G (BSP) THREAD - PIPE



Code	Ref.	F	Ø	P	A	A1	B	C	D	E	E1	G	H	I	II	Ch	Ch1	Nmax
9065708	STP L 2/2 1/8 - Ø6	1/8	6	6	58.5	27.8	43.2	14.7	6.4	14	11.4	20	M12x0.75	14.6	20	15	12	12
9065709	STP L 2/2 1/4 - Ø6	1/4	6	8	61.5	28.8	43.2	14.7	6.4	18	11.4	20	M12x0.75	14.6	20	15	14	12
9065710	STP L 2/2 1/8 - Ø8	1/8	8 ▲	6	66.2	31.8	49.7	18.7	9.1	15	13.8	26	M15x1	18.7	24	17	14	11.8
9065711	STP L 2/2 1/4 - Ø8	1/4	8 ▲	8	70.6	34.2	49.7	18.7	9.1	18	13.8	26	M15x1	18.7	24	17	14	11.8
9065712	STP L 2/2 3/8 - Ø8	3/8	8 ▲	9	72.2	34.8	49.7	18.7	9.1	22	13.8	26	M15x1	18.7	24	17	17	11.8

▲ Ø8 = Ø5/16"